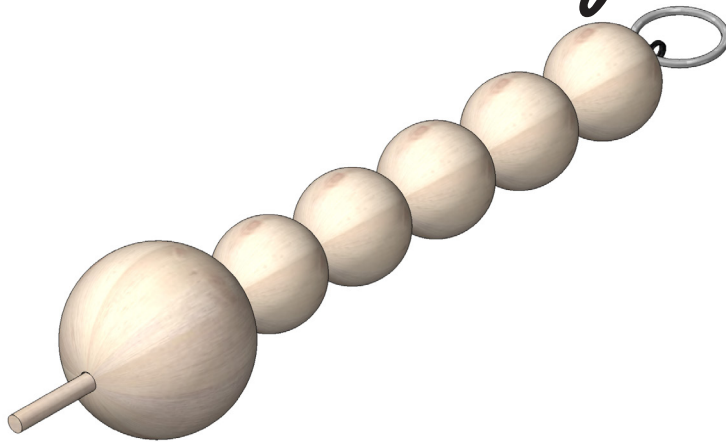
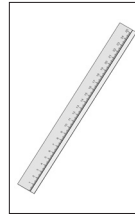


105700

# Key Chain



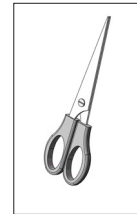
## Required Tools:



Ruler



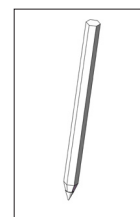
Craft knife



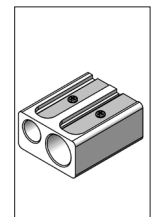
Scissors



Hammer



Pencil

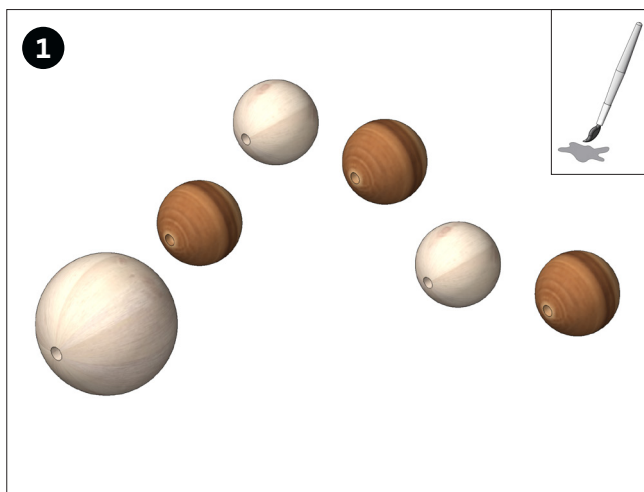
Brush and  
paint

Sharpener

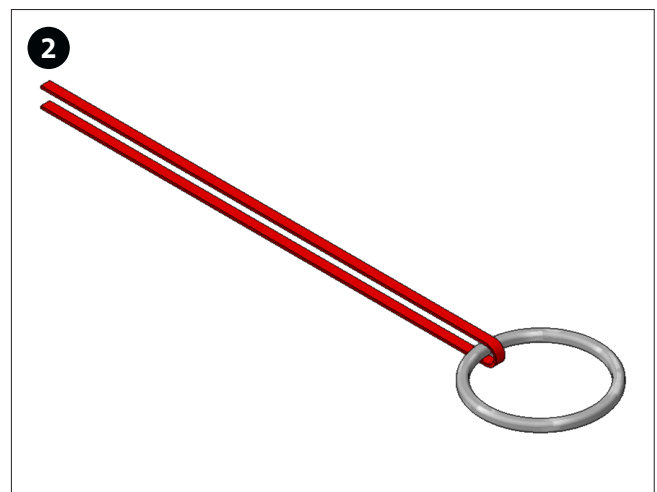
### Please Note:

The OPITEC handicraft packs are not toys in a typical off-the-shelf sense, but rather additional teaching and learning material for educational purposes. This craft pack may only be constructed by children and adolescents under the guidance and supervision of experienced adults. Not suitable for children under 36 months. Danger of suffocation!

Parts List	Quantity	Size (mm)	Description	Part No.:
Leather Cord	1	250 mm	Leather Cord	1
Drilled Wooden Ball	1	Ø 20 mm	Head	2
Drilled Wooden Ball	5	Ø 12 mm	Body	3
Round Rod	1	Ø 4 x 50mm	Nose	5
Key Ring	1	Ø 20 mm	Key Ring	6

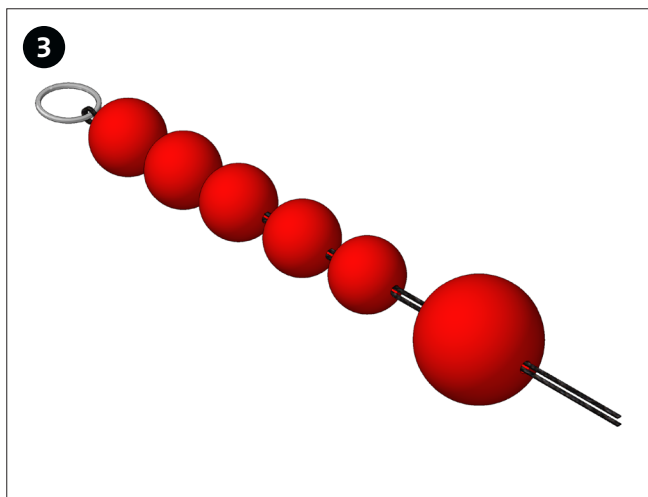


Colour the wooden balls as you like.

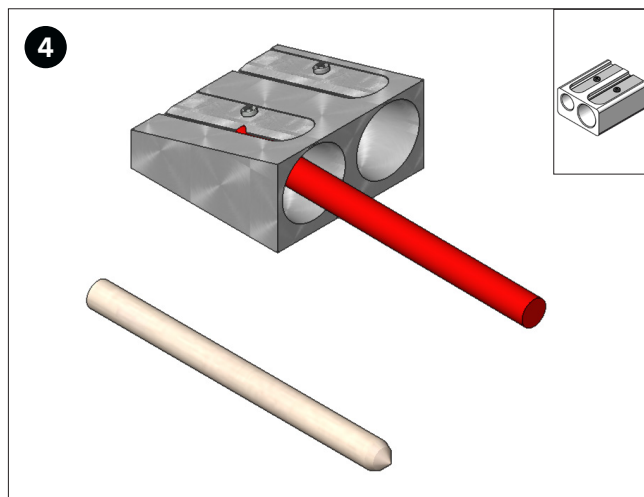


Place the leather cord (1) around the key ring (6). Align the ends the same length (see picture).

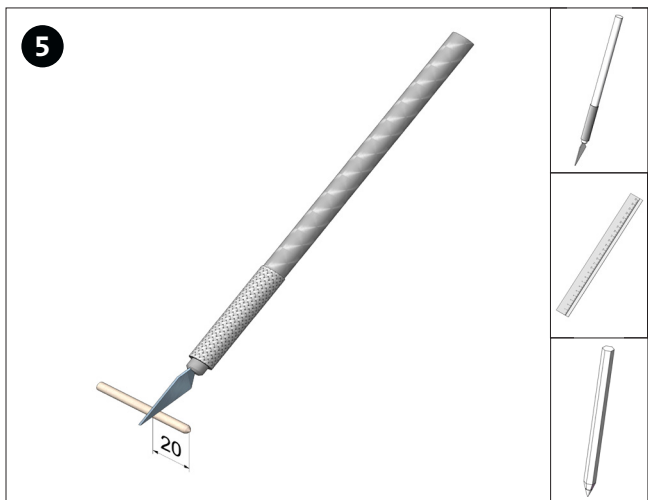
Instructions 105.700  
Key Chain



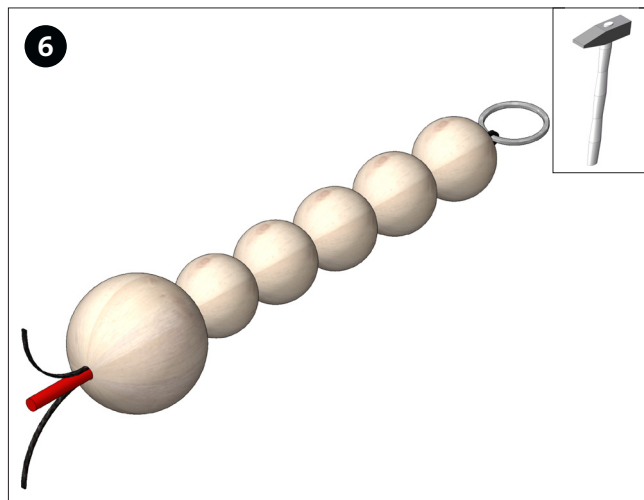
Thread the wooden balls as shown.



Slightly sharpen the round rod (5) at one end with a sharpener.

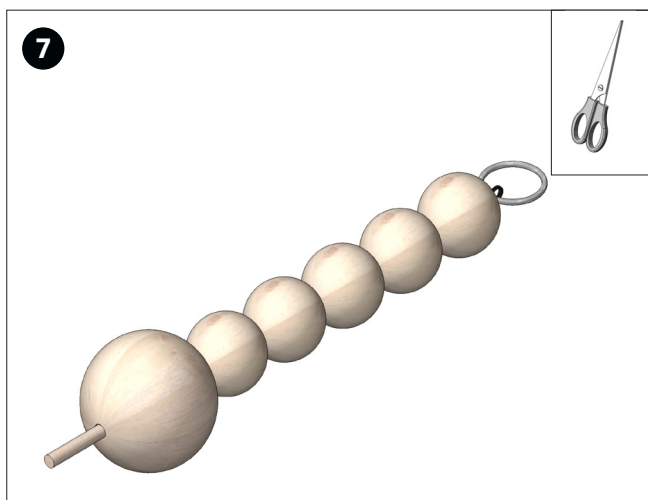


Using a craft knife, shorten the round rod to 20 mm while turning the piece as shown.

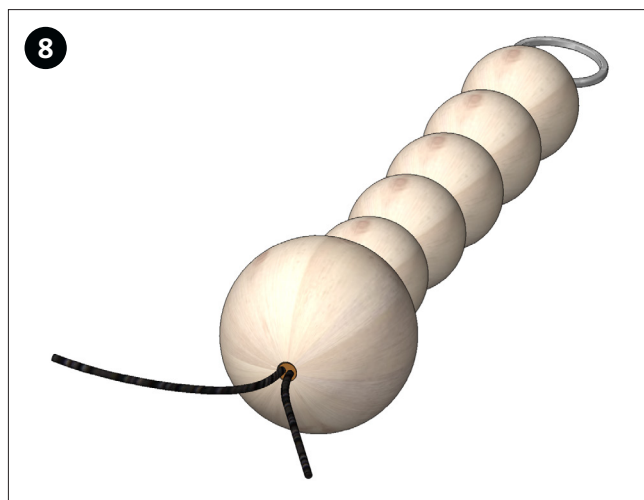


Insert the round rod with the pointed end into the hole so that the leather cord is fixed. Drive the rod into the hole with a hammer.

**Note:** Follow step 7 or 8!



Cut off the protruding ends of the rod with scissors or a craft knife. Done!



As shown, you can also leave the ends of the leather cord and cut the round rod so that it is flush with the wooden ball.