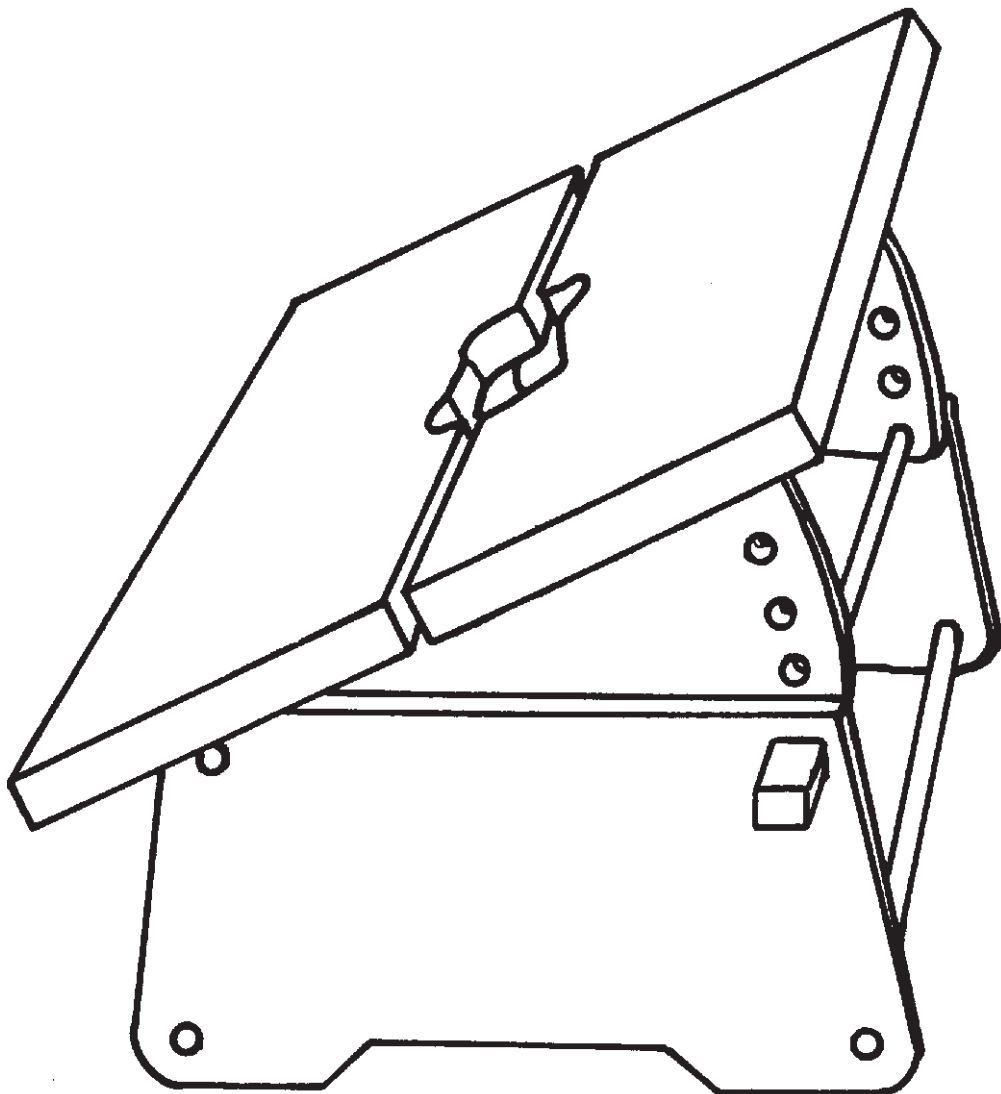


# OPITEC

## **1 0 0 . 3 1 9** ***Adjustable Foot Stool***



### **Please Note**

The OPITEC range of projects is not intended as play toys for young children. They are teaching aids for young people learning the skills of Craft, Design and Technology. These projects should only be undertaken and tested with the guidance of a fully qualified adult. The finished projects are not suitable to give to children under 3 years old. Some parts can be swallowed. Danger of suffocation!

### **Warning!**

This product contains small parts that can be swallowed  
There is a danger of choking

## Contents:

Part.	Description	Quant.	Size
1	foot board	2	15 x 100 x 350 mm
2	sides	2	20 x 150 x 200 mm
3	adjusting boards	2	15 x 100 x 150 mm
3a	fixing dowel	3	∅ 10 x 300 mm
3b	adjusting dowel	1	∅ 10 x 350 mm
4	wood block	1	25 x 25 x 25 mm
5	dowel	1	∅ 10 x 350 mm

## Instructions

### 1. Making the top (drawing A)

- Transfer the drawing of the cut out portion of the stool onto the appropriate boards .(Part 1, see drawing A)
- Drill holes for the corners with a 10 mm drill
- Cut out the rest of the design using a Coping saw.
- Shape both halves of the top together.
- Clean up all the both parts and shape to finish.

### 2. Making the adjusting boards (drawing C)

- Transfer the form and size of the adjusting boards from the plan on to parts 3.
- Place the parts together and drill the holes for both pieces at the same time. Place a short length of dowel into one of the holes to keep the parts in line.
- Shape file and smooth to finish.

### 3 Making the sides (drawing B)

- Transfer the shape and size of the sides from drawing B on to the correct board.
- Keeping both parts together drill and shape both sides at the same time. Make sure the measurements are accurate.

### 4 Fixing the adjusting boards and the top (drawing D and E)

- Transfer the position of the dowel holes on the adjusting boards onto the top. Use a special dowel marker if possible.
- The holes in the top board should be drilled 10 mm deep.
- When complete glue and dowel the parts together (dowel part 5)

### 5. Position and glue the 3 long spacing dowels (part 3a) into the sides. (part 3a, drawing E)

### 6 In the end grain of the wooden block (part 4) drill a hole 10 mm dia and 20 mm deep and glue in the adjusting dowel (part 3b).

- This is for the fixing peg.

1x Wooden block 25 x 25 x 25 mm (4)      adjusting dowel ∅ 10 x 350 mm (3b)

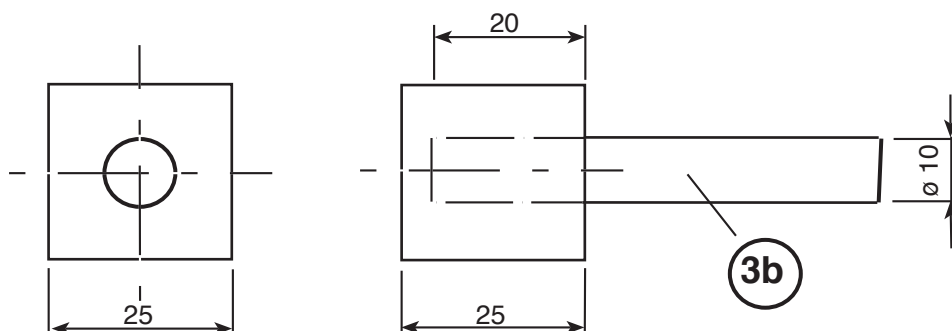
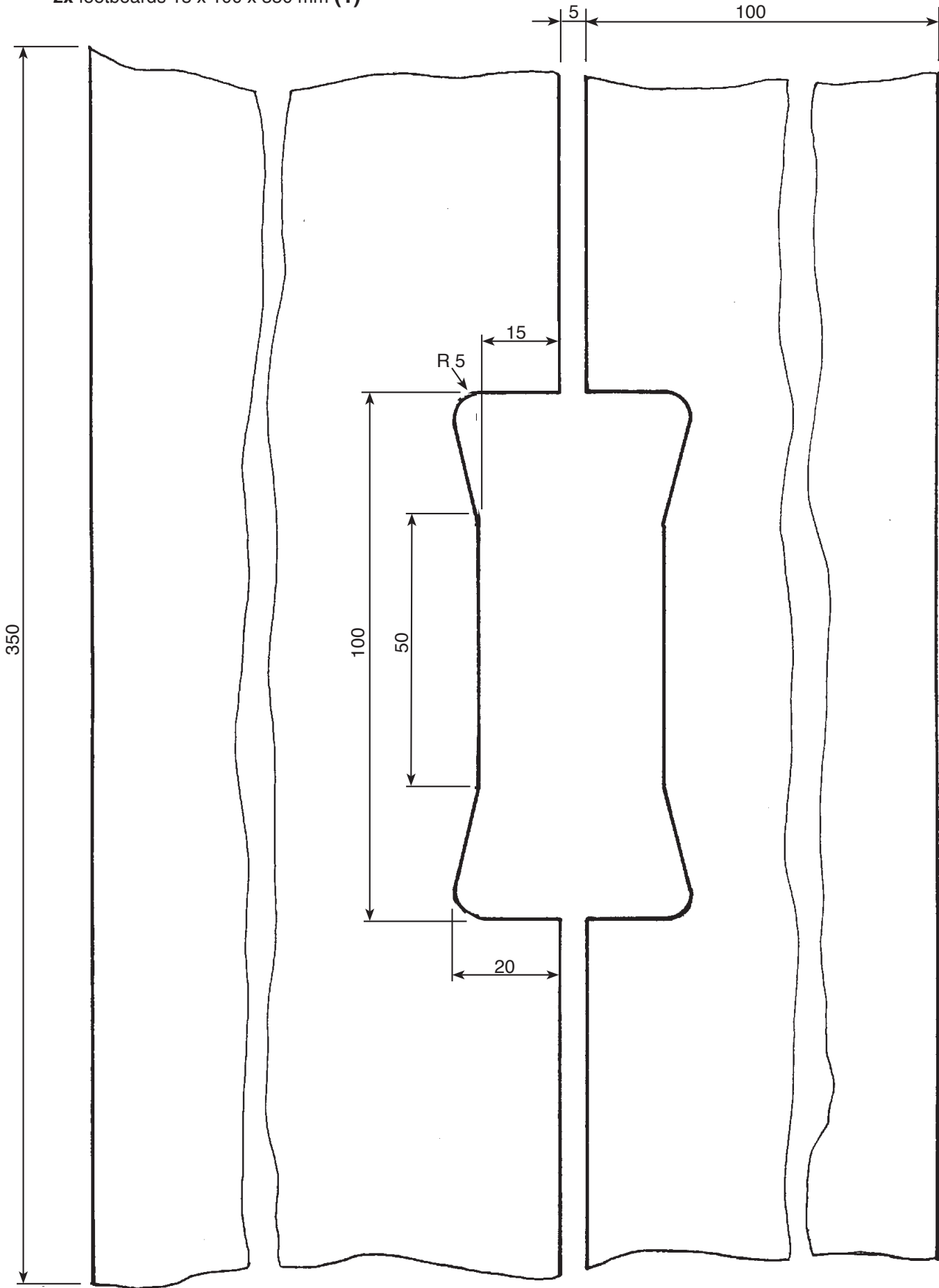


Diagram A

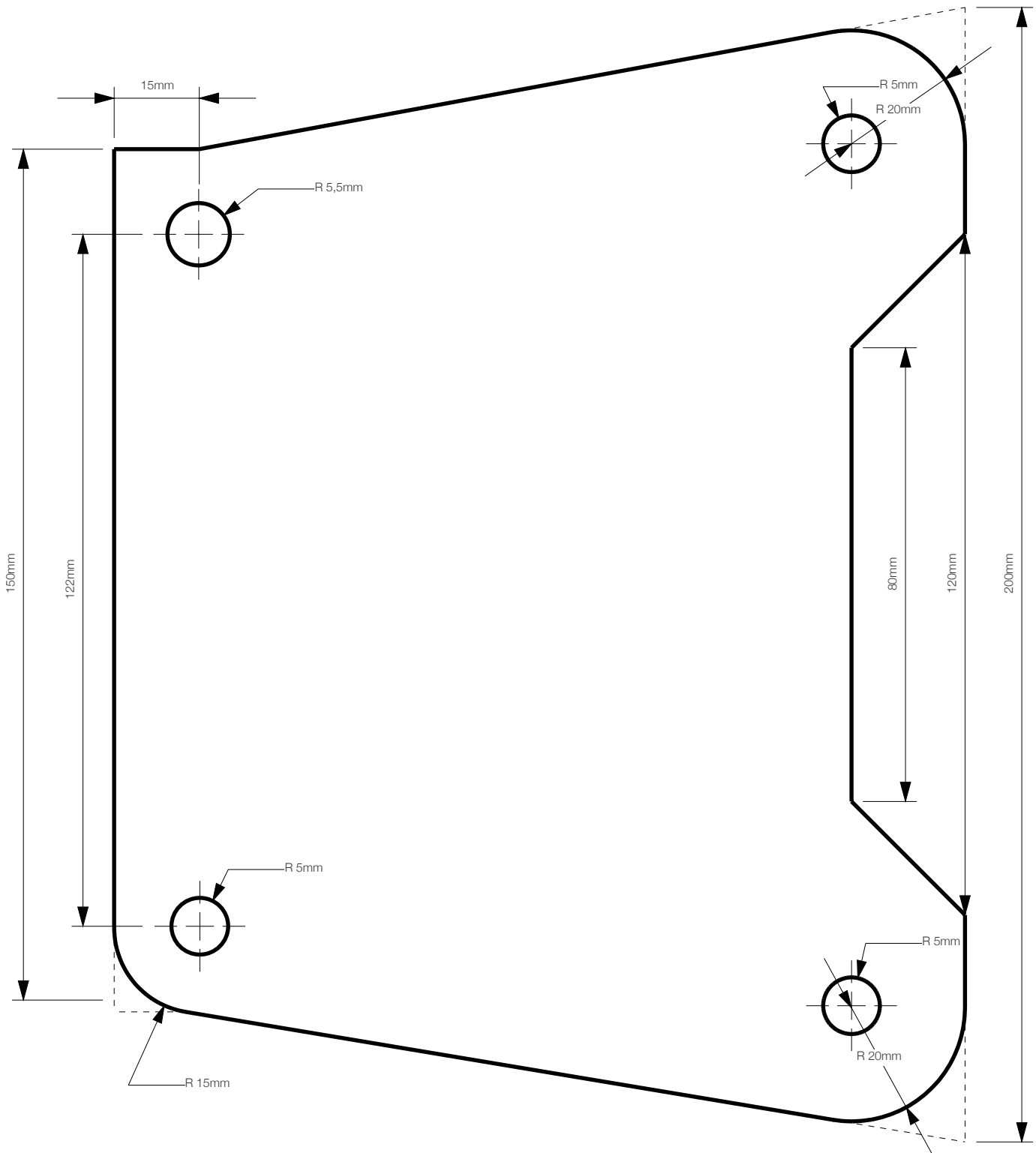
2x footboards 15 x 100 x 350 mm (1)





## Diagram B

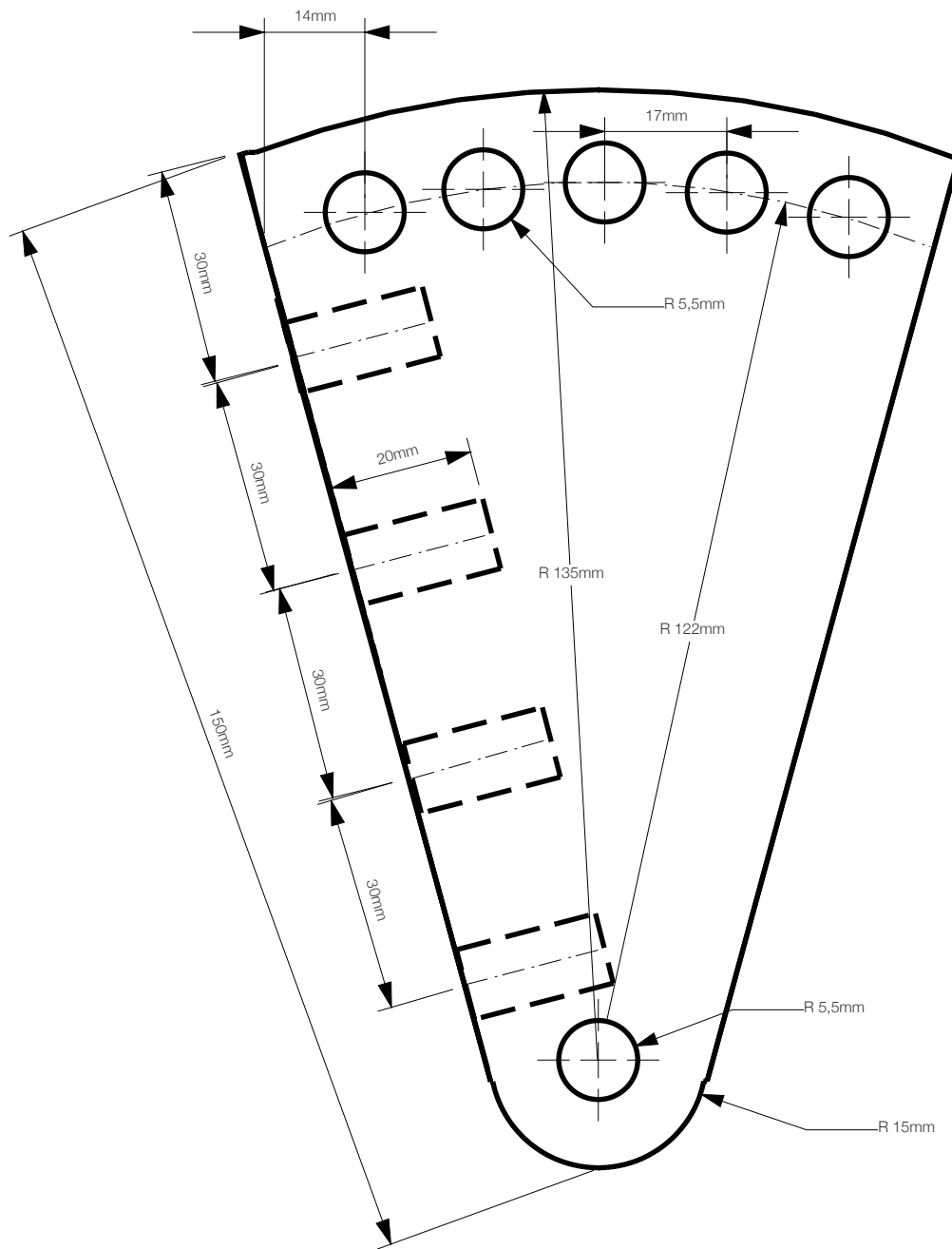
2x sideboards 15 x 150 x 200 mm (2)





## Diagram C

2x adjusting boards 15 x 100 x 150 mm (3)







### Diagram D

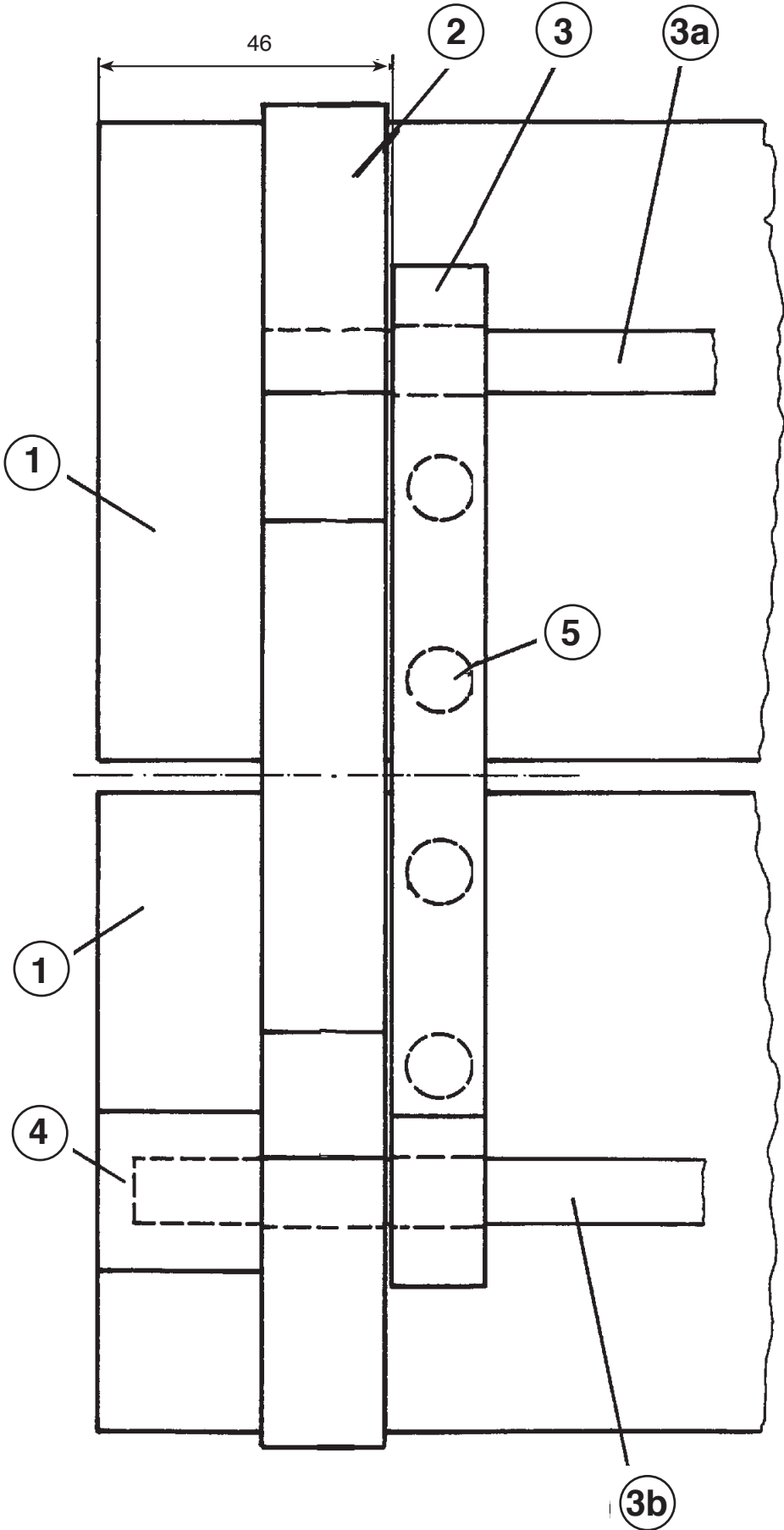


Diagram E

