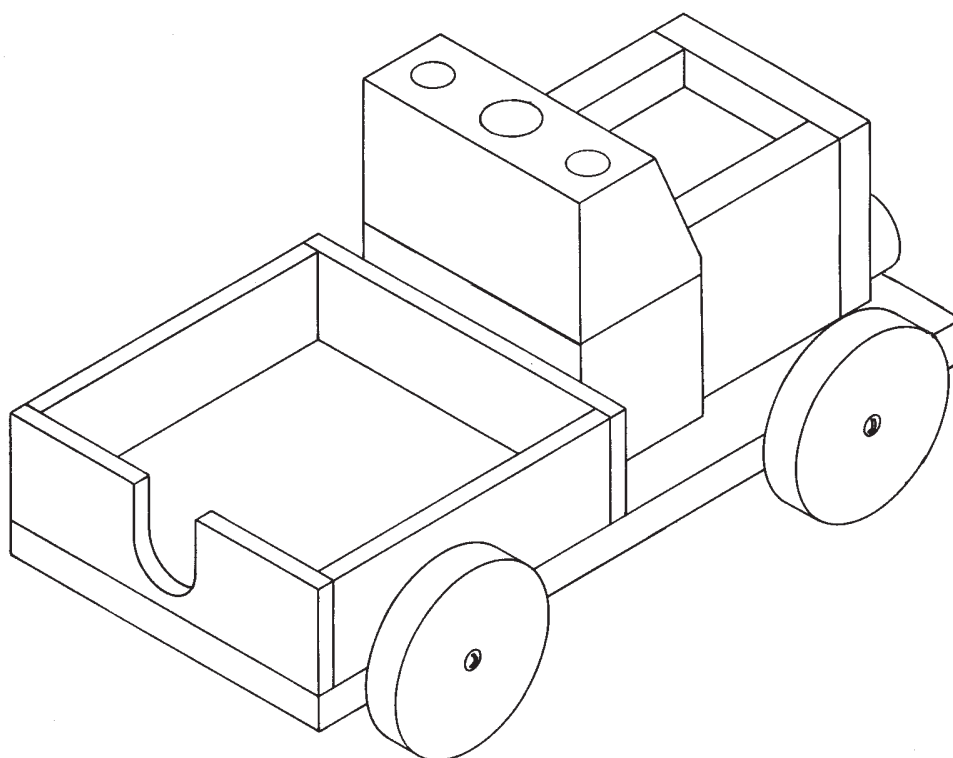


# OPITEC

## Hobbyfix

### 1 0 1 . 0 3 7

## Stationary-Express



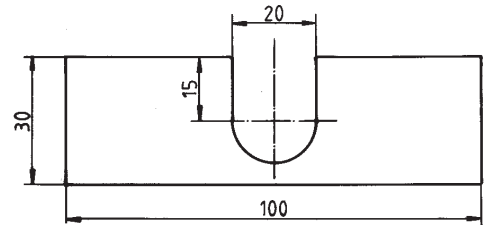
Parts list	Quantity	Size in mm
Base	1	10 x 100 x 200
Side boards / End boards	2	5 x 30 x 200
Cab	1	40 x 40 x 150
Motor block	1	40 x 40 x 40
	or 2	20 x 40 x 40
Motor block sides / Front	1	10 x 50 x 150
Wheels	4	ø 40 - 50
Lights	2	ø 20
Screws	4	3 x 25
Washers	4	3,2

#### Please Note

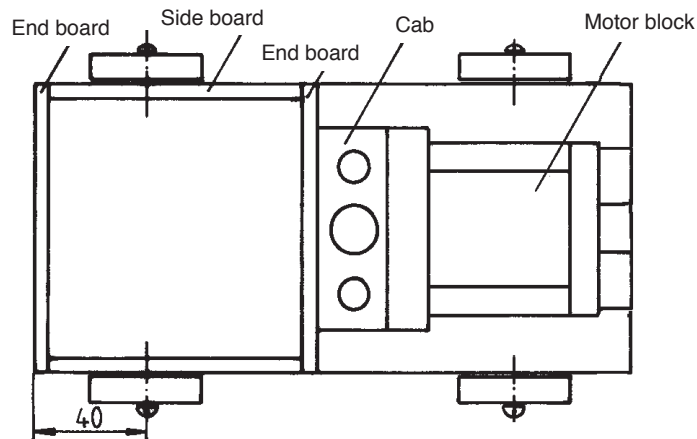
The OPITEC range of projects is not intended as play toys for young children. They are teaching aids for young people learning the skills of Craft, Design and Technology. These projects should only be undertaken and tested with the guidance of a fully qualified adult. The finished projects are not suitable to give to children under 3 years old. Some parts can be swallowed. Danger of suffocation!

## PLANNING AND MAKING

We start by constructing the area for holding a small notepad. The side and end boards of the "load" area must be checked. A "U" shaped slot can then be marked out on the rear board, a 20 mm dia hole drilled, using a Forstner bit and two saw cuts made to complete the slot. If you wish, you can, of course design your own slot shape. The next stage is to assemble and glue together (with PVA) the four parts that make up the "load" area. Make sure all the parts are held squarely with clamps whilst they are drying.

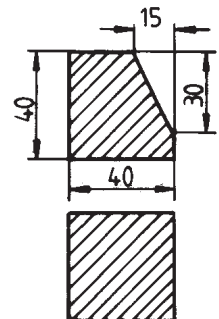
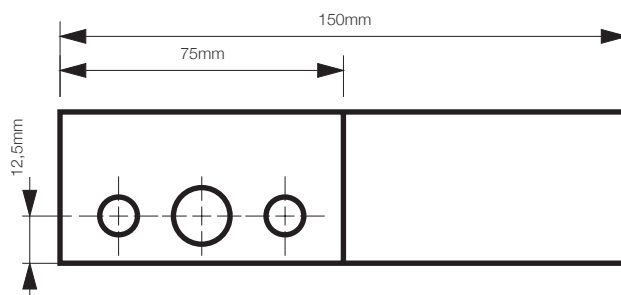


Now take the base (see parts list) and mark out the holes for the wheels 40 mm from each end and drill a 2 mm dia hole. The "load" area, once it is set, can be glued and clamped to the base. When finally dry, the base and "load" area should be smoothed with glasspaper.



From the pine strip 40 x 40 x 150 mm saw two parts each 75 mm long. These will be joined together to form the cab. The upper part should be angled to form the shape of the cab as shown in the diagram. Then glue the completed cab to the base up against the "load" area.

It is best to finish the cab with glasspaper at this stage before gluing it to the base, be careful not to round the cab where it joins the base.

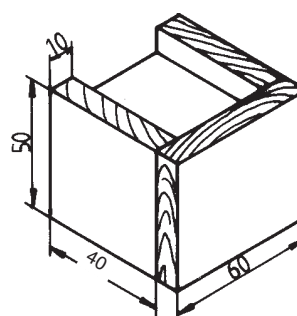
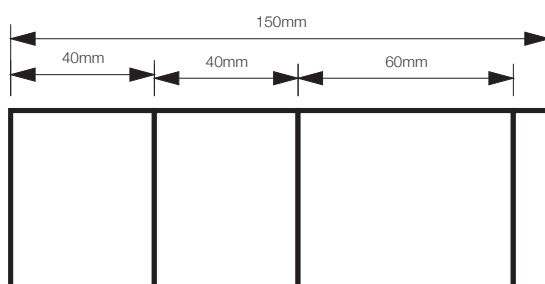


Now take the pine strip 40 x 40 x 40 mm for the motor block. The motor block surround is made up from 50 x 10 mm pine strip cut to length as shown in the diagram. The well is designed to hold small items such as erasers, paper clips etc. Clean up the shape of the finished motor block and surround making sure that you do not remove any excess material from the faces which are to be glued e.g. the face which glues to the base and cab.

The two pine discs which serve as the lights can then be glued to the front and glue to the base. Smooth any remaining sharp edges with glasspaper and drill the holes for the pencil /pen storage in the top of the cab. These are recommended as 10 and 15 mm diameter.

All that is left now is to mount the four wheels using the screws and washers provided to ensure that they run smoothly.

The Stationery Express is now ready for your desk!



E101037#1