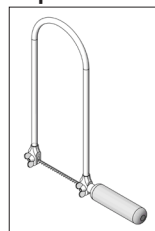


125.243

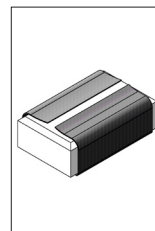
Christmas Star Helios



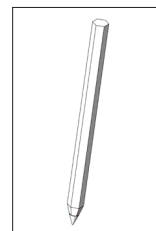
Required tools:



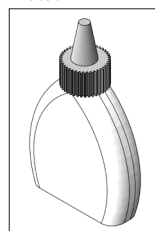
Fretsaw



Sandpaper



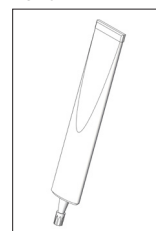
Pencil



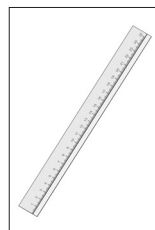
Wood adhesive



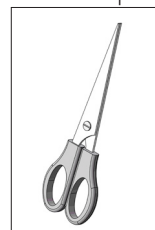
Adhesive tape



All-purpose glue



ruler



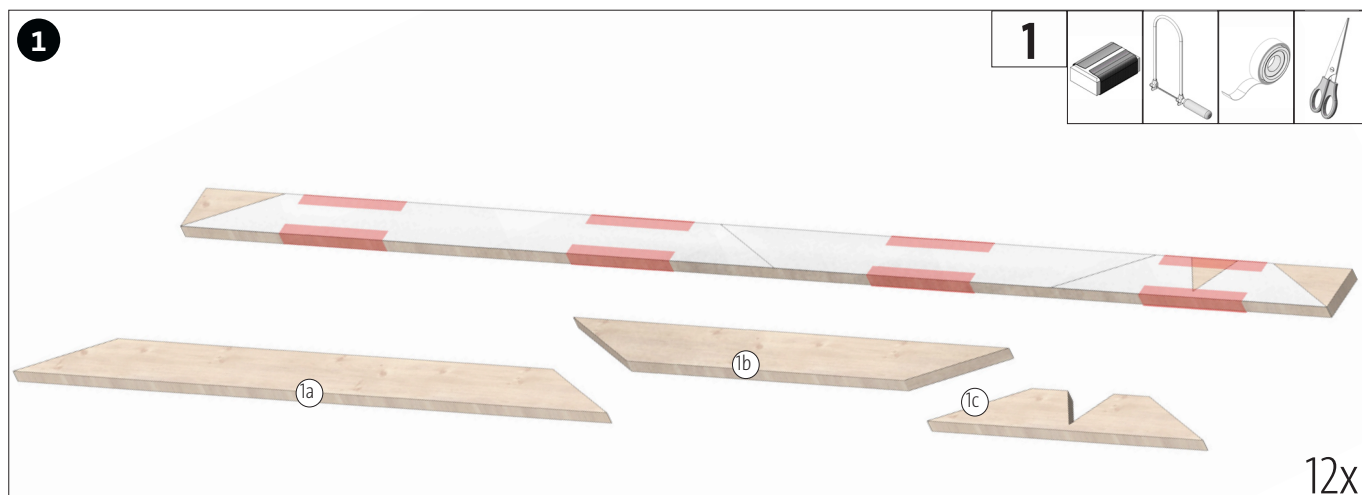
Scissors



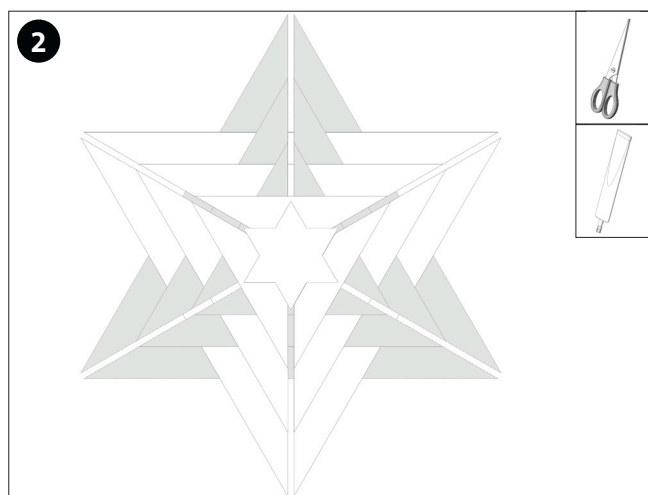
NOTE:

After completion, the OPITEC work kits are not articles with toy character of a generally commercial kind, but teaching and learning aids to support educational work. This kit may only be built and operated by children and young people under the guidance and supervision of competent adults. Not suitable for children under 36 months. Danger of suffocation!

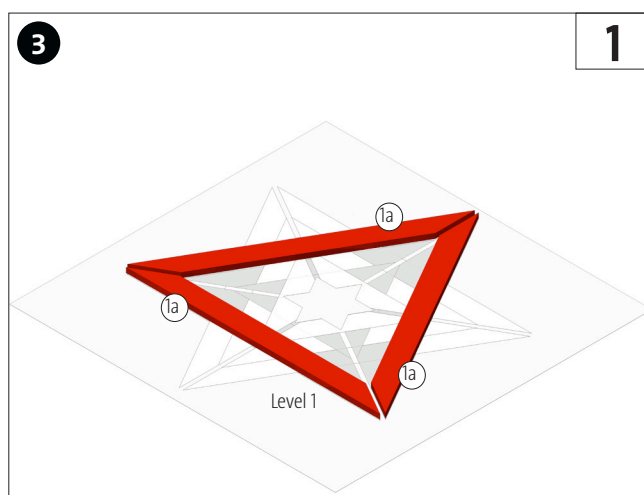
Parts list	Quantity	Dimensions (mm)	Designation	Part no.
Wooden strip	12	500x20x5	Wooden strips	1
Wooden veneer	2	75x75x0,5	Middle Star	2
Round bar	3	ø6x60	Spacer	3
LED lamp E14	1		Lighting	4
Electric kit	1		Lighting	5



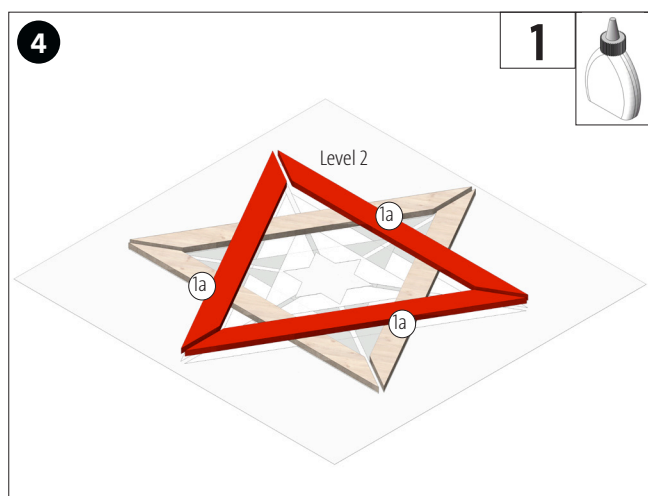
Transfer the template (A) to the wooden slats (1) and cut to length as shown. Then clean the saw cuts.



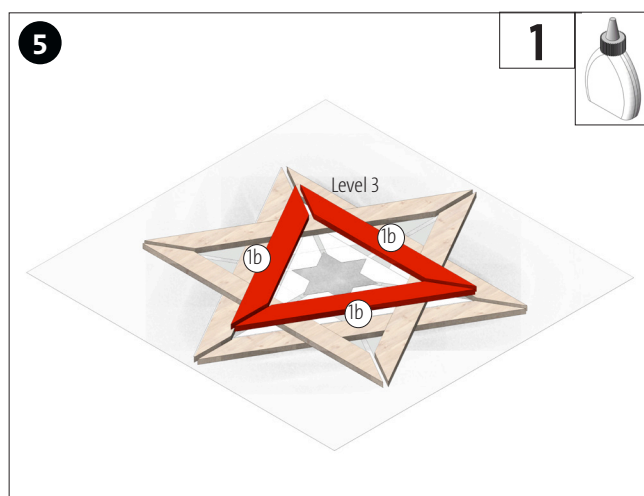
Cut out the template for the star (B) and glue it together. This serves as a template for neatly gluing the individual levels.



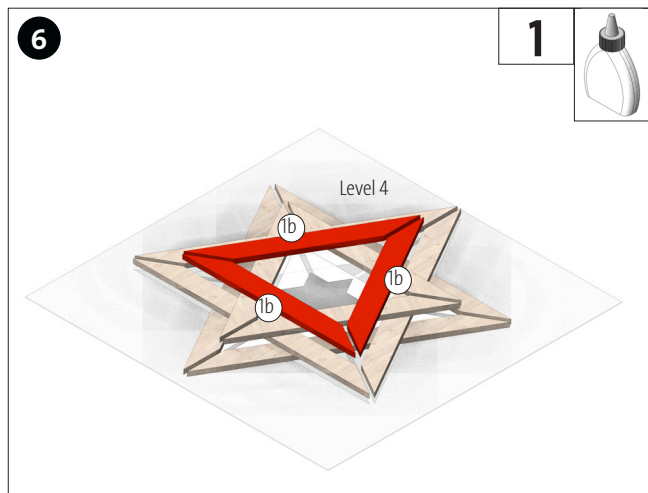
Place the three wooden strips (1a) for the first level of the star on the template.



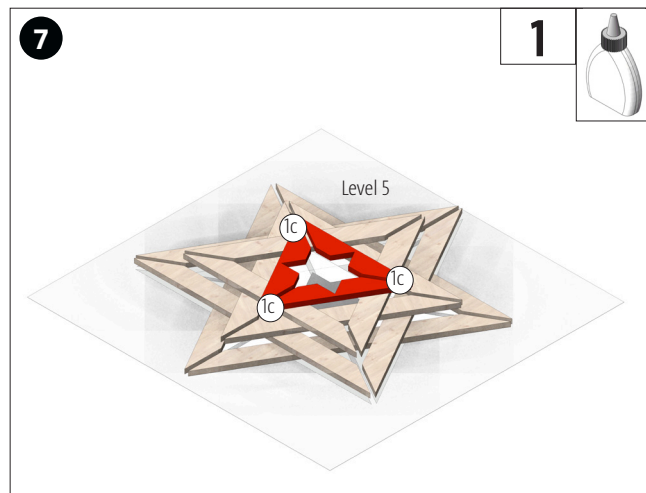
Glue on level 2 from another three wooden slats (1a) according to the template..



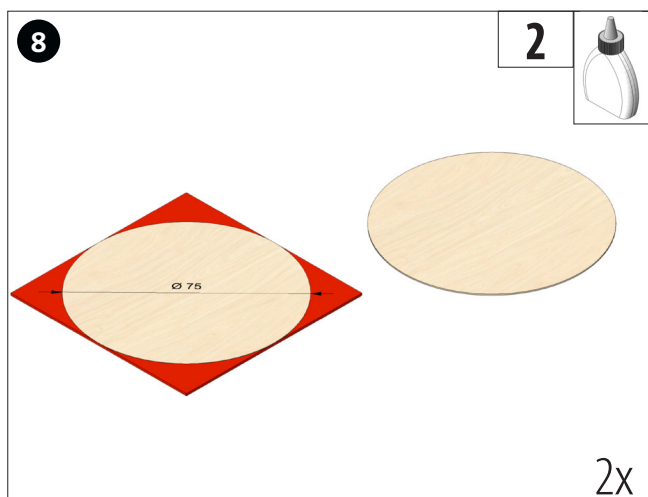
Glue on level 3 from three wooden slats (1b) according to the template.



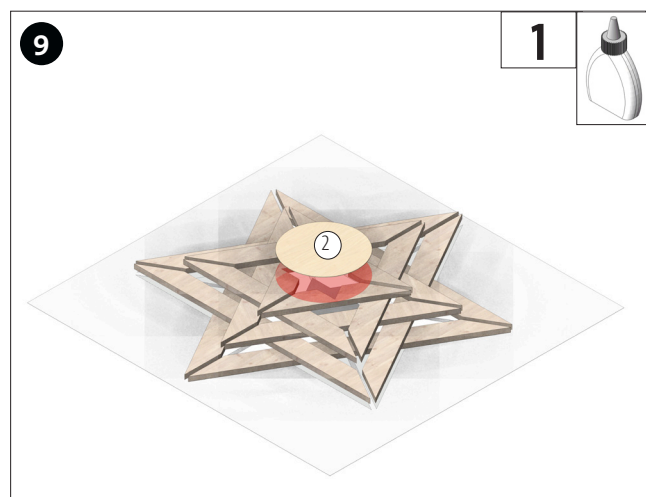
Glue on level 4 from another three wooden slats (1b) according to the template.



Glue on level 5 from three wooden slats (1c) according to the template.



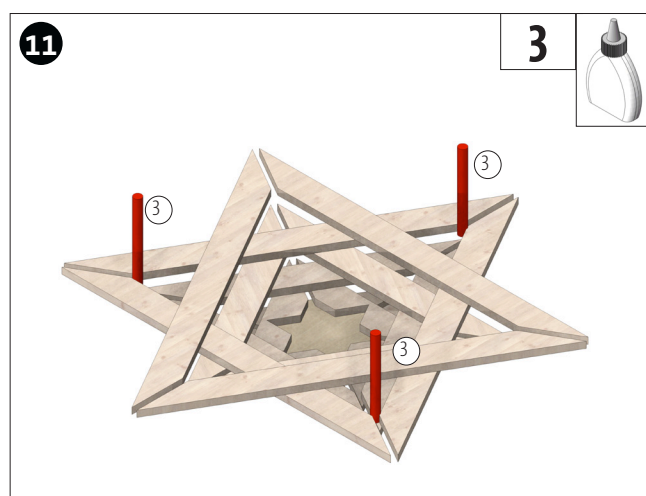
Cut out a circle $\varnothing 75$ mm from each of the two pieces of wood veneer.



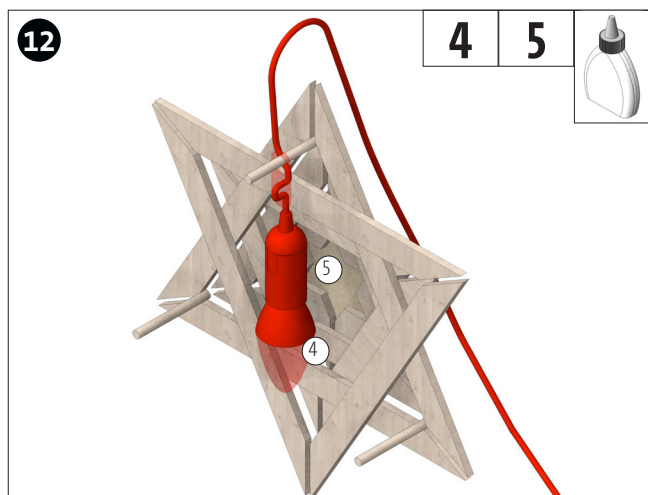
Glue a wood veneer (2) centred on level 5.



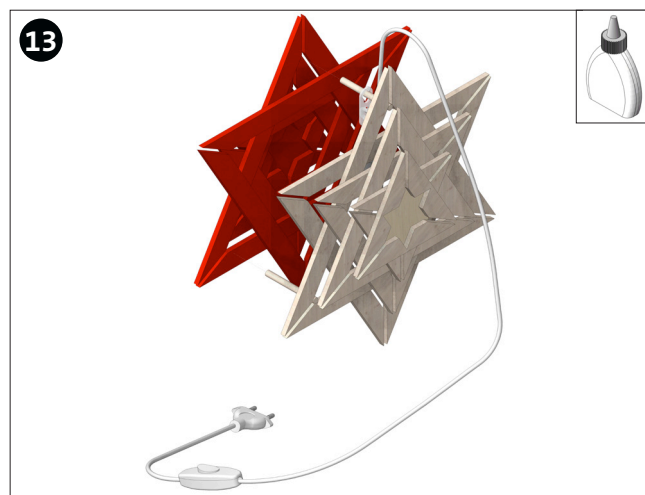
Glue on level 5 from three more wooden strips (1c) according to the template. Repeat steps 3-10 for the second half of the star.



Glue in the round bars (3) as shown.



Screw the LED lamp into the socket of the electrical set and fix it as shown.



Glue on the second star, as shown, so that it is congruent. Let the glue dry well. Finished!