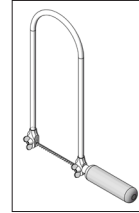


721357

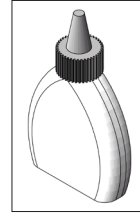
Fretsaw Project Crazy House



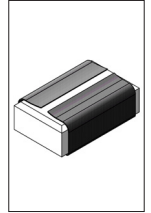
Required Tools:



Fretsaw



Wood glue



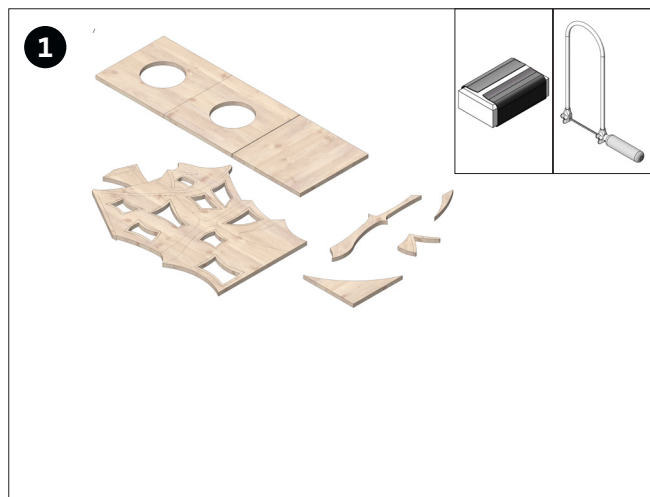
Sandpaper

Please Note:

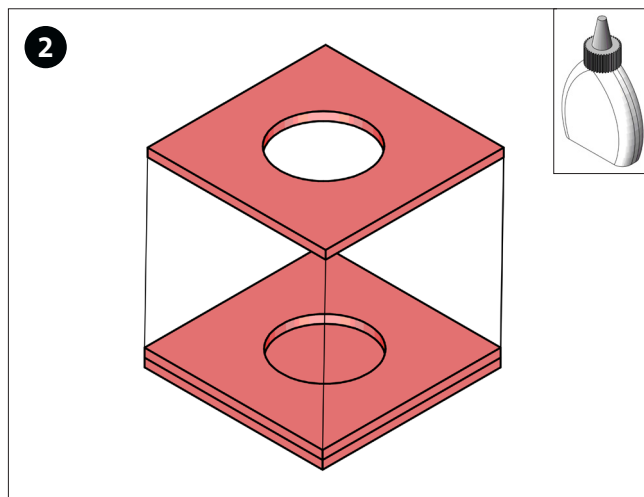
The Opitec Range of projects is not intended as play toys for young children. They are teaching aids for young people learning the skills of craft, design and technology. These projects should only be undertaken and operated with the guidance of a fully qualified adult. The finished projects are not suitable to give to children under 3 years old. Some parts can be swallowed. Danger of suffocation!

Parts List	Quantity	Size (mm)	Description	Part No.
Plywood	1	300 x 210 x 4 mm	Lighthouse	1

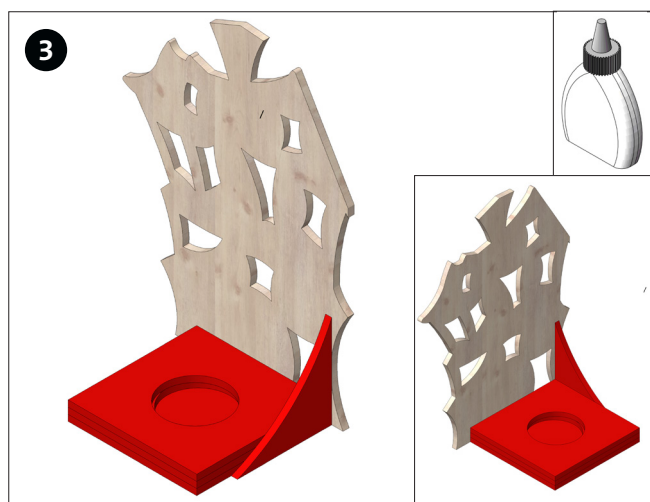
Instructions 721.357
Fretsaw Project Crazy House



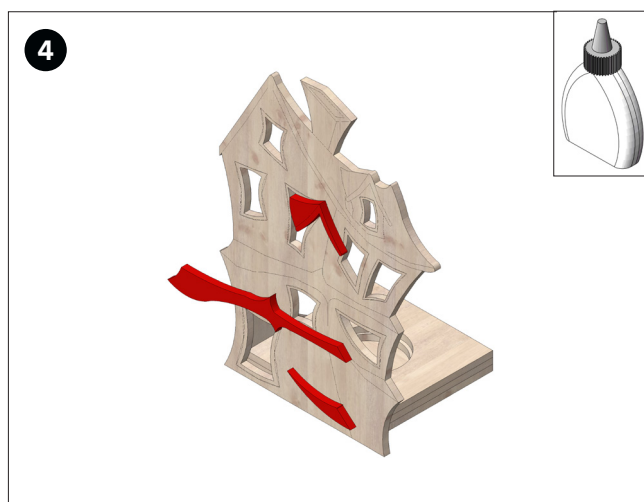
Saw off the singular parts with a fretsaw according to the pattern.
Sand/ile the cut surfaces with sanpaper or a file.



Glue the candle holders together with wood glue.



Glue the candle holder and the side part to the house, as shown.



Glue the remaining parts as shown.



The finished house can be decorated as desired. Done!