

# 100663

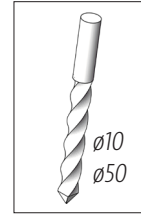
## Pot saucer



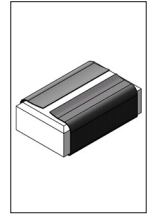
### Required Tools:



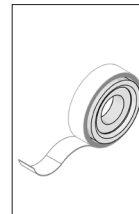
Wood Rasp



Drill Bit



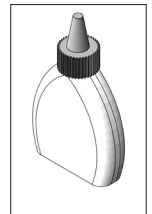
Sandpaper



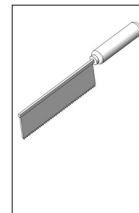
Adhesive Tape



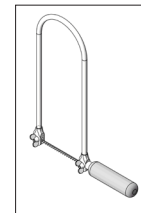
Brush



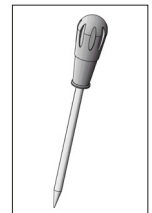
Wood Glue



Fine Jigsaw



Jigsaw

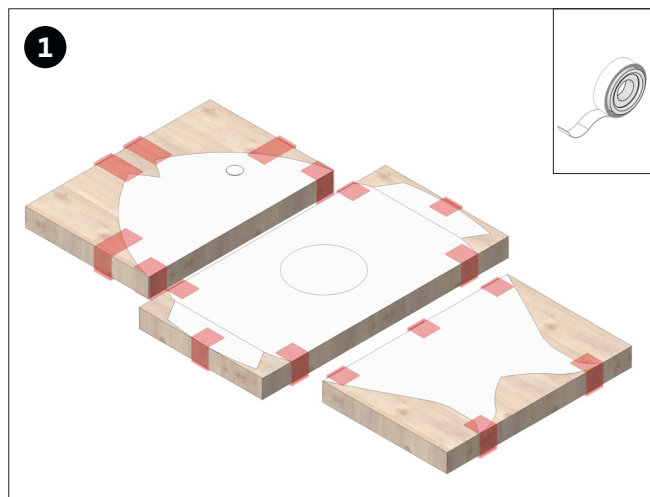


Pricking Awl

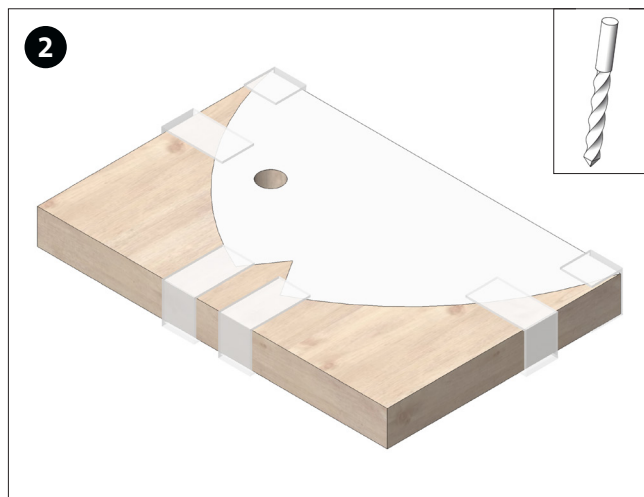
### Please Note:

The Opitec Range of projects is not intended as play toys for young children. They are teaching aids for young people learning the skills of craft, design and technology. These projects should only be undertaken and operated with the guidance of a fully qualified adult. The finished projects are not suitable to give to children under 3 years old. Some parts can be swallowed. Danger of suffocation!

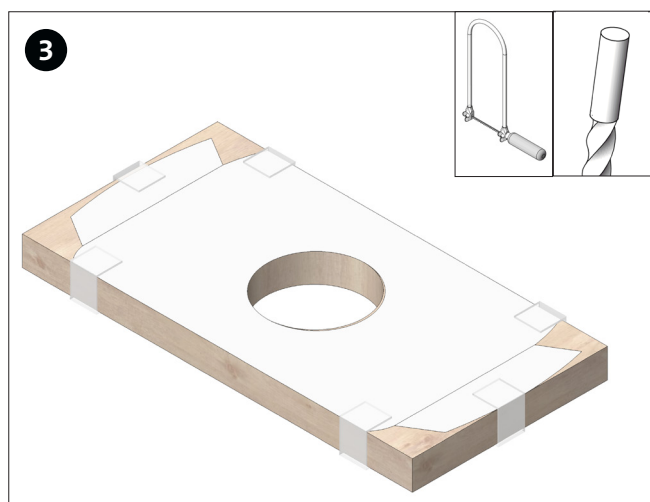
Components List	Quantity	Sizes (mm)	Description	Part No.
Pine board	1	15 x 100 x 200 mm	Body	1
Pine board	2	15 x 100 x 150 mm	Head, tail	2
Round rod	1	Ø 10 x 200 mm	Connection	3
Eyebolt	4	12 mm	Connection	4
Screw hooks	4	20 mm	Connection	5



Transfer the templates (pages 5, 7 & 8) to the pine boards (1), (2), as shown. **Note:** Pay attention to the position of the holes.



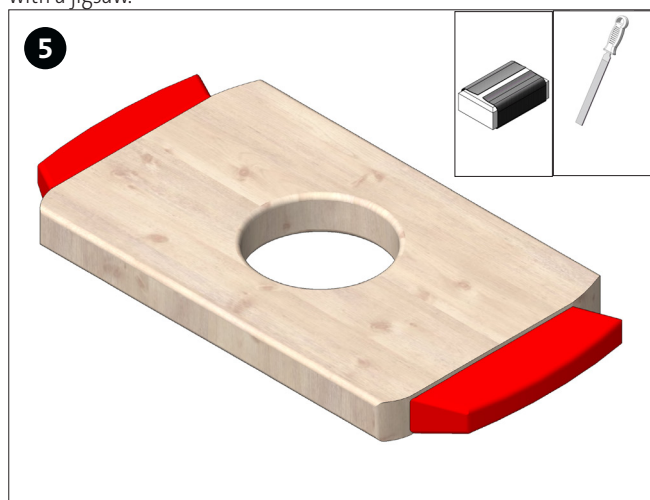
For the fish eye drill a Ø 10 mm hole.



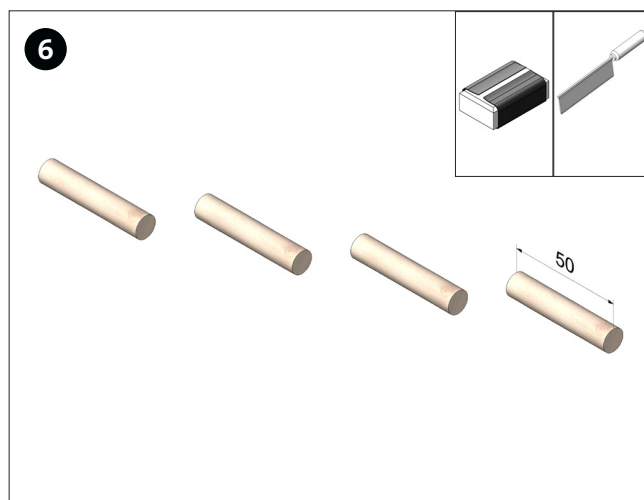
Drill out the large hole with a Forstner bit. Children and pupils must have the hole drilled by an adult. **Note:** the hole can also be cut out with a jigsaw.



Saw out the base board with a jigsaw and sand cleanly.



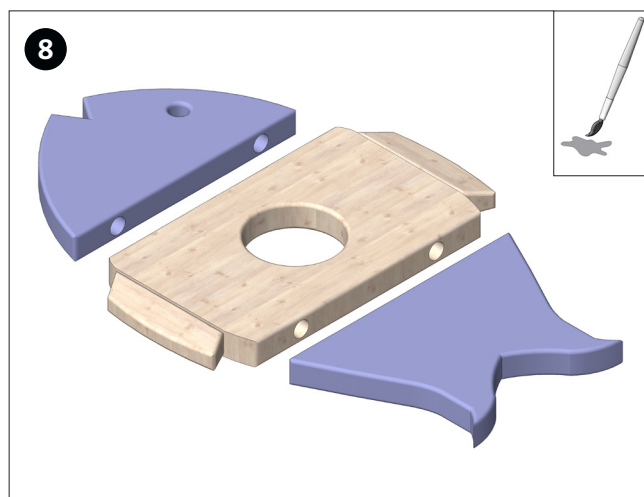
Use a wood rasp to taper the fish fins by approx. 3 mm (see template on page 7) and then sand them cleanly.



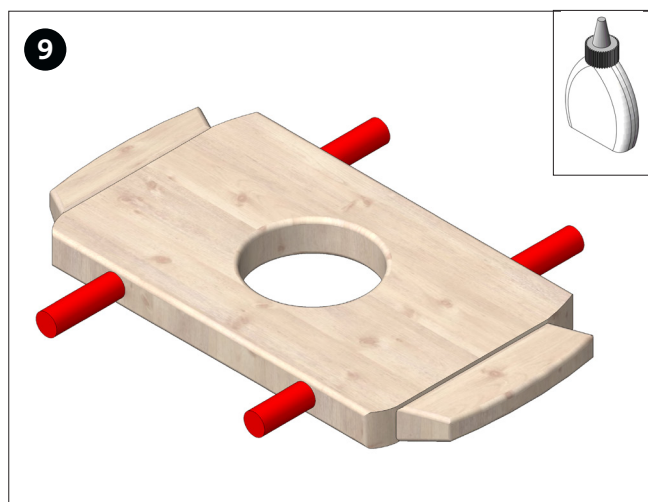
**Variation 1 with dowels:** cut four dowels approx. 50 mm long from the round rod (3) and sand the cut surfaces.



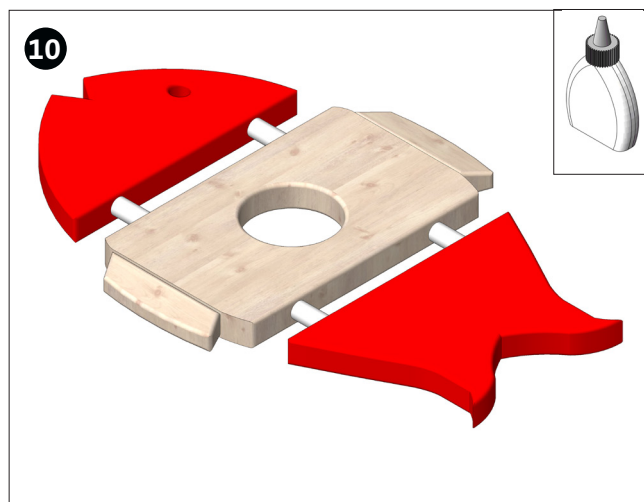
Drill Ø 10 mm holes for the dowel connections. See drawings on pages 5, 7, & 8.



You can paint the pot saucer as you wish. **Note:** No paint may get into the holes and do not paint the dowels on the surfaces to glue (ends).



Glue the dowels (3) into the central part.



Dowel the head and the tail to the body 10 mm apart.



**Variation 2 with screw hooks:** Pierce the holes for the screw hooks with a pricking awl and screw in the screw hooks.



Done!



