

OPITEC

Hobbyfix

1 0 3 . 5 8 0

Bottle opener „Shark“



Parts list:

- 1x Pine strip 20 x 40 x 250 mm
- 1x holed metal sheet 1,5 x 15 x 120 mm

Necessary tools etc:

- Fretsaw , hand or machine
- File, rasp
- Glass paper
- Hand countersink
- Drill 7mm diameter
- Hacksaw
- Two component glue

Please Note

The OPITEC range of projects is not intended as play toys for young children. They are teaching aids for young people learning the skills of Craft, Design and Technology.

These projects should only be undertaken and tested with the guidance of a fully qualified adult.

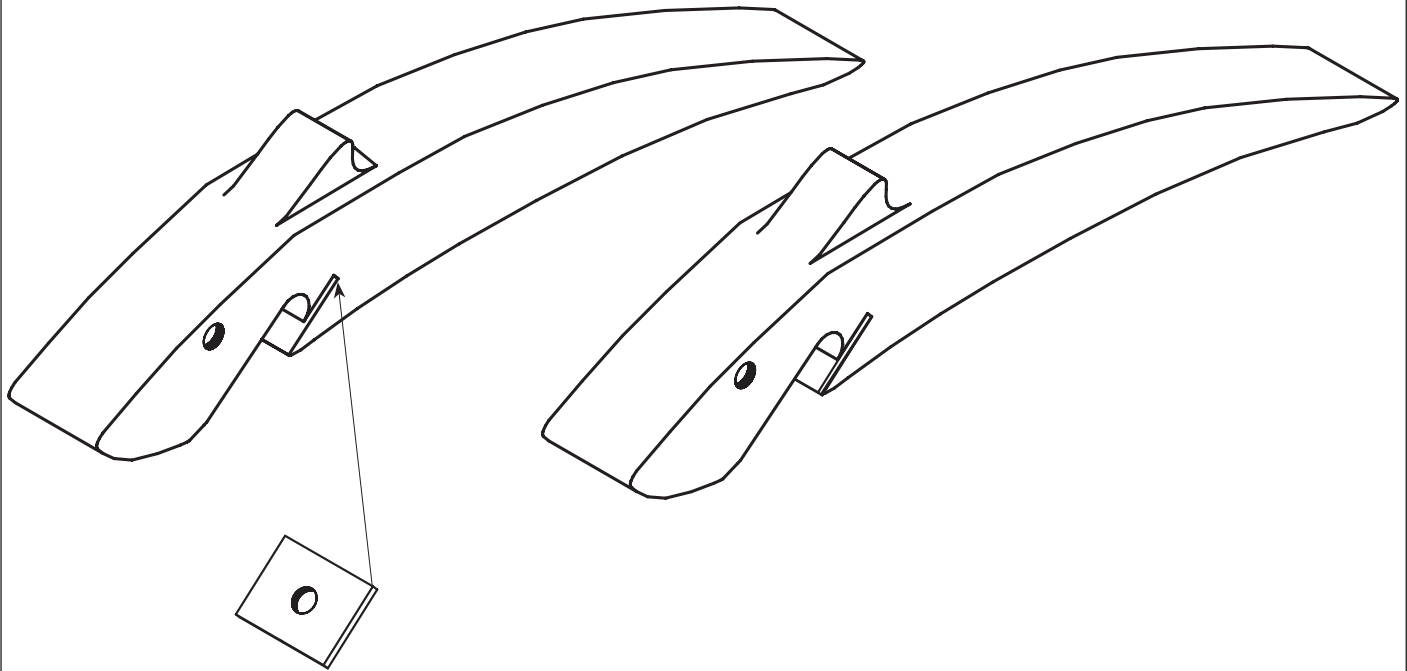
The finished projects are not suitable to give to children under 3 years old. Some parts can be swallowed. Danger of suffocation!

INSTRUCTIONS:

1. Trace the pattern (Page 3) on to the wood (15 x 40 x 250mm)
2. Saw out the slot for the metal strip.

Note: Keep to the correct size shown so that the metal strip will sit tightly in place.

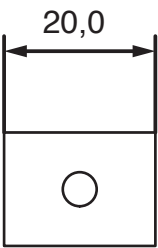
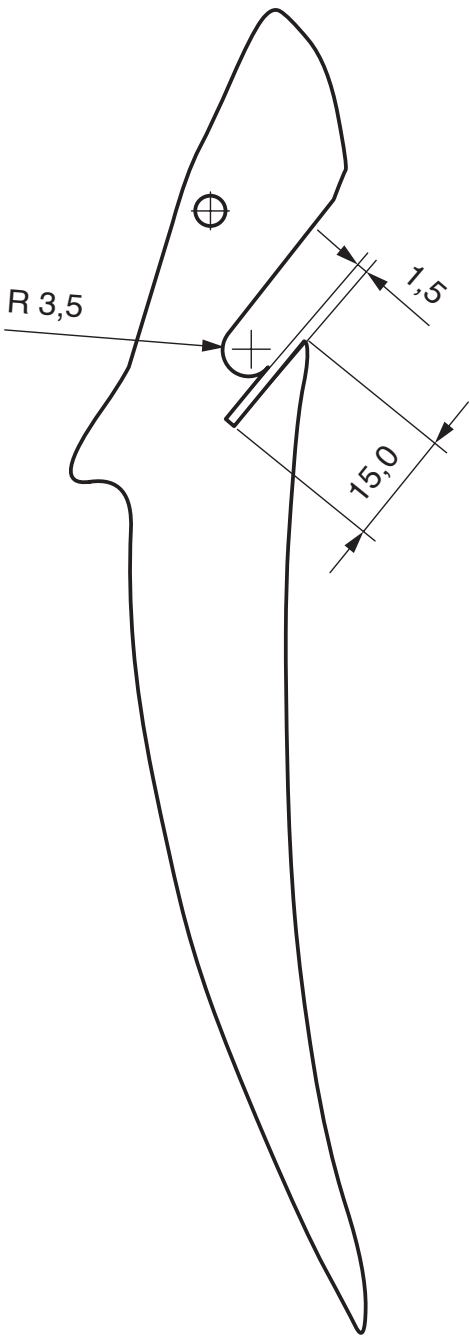
3. Use a 7mm dia drill to remove the top of the mouth
Use a countersink bit to make the eyes
4. Saw out the shape of the shark with a fretsaw- rasp and wood file to shape and chamfer the sides of the dorsal fin



5. Saw a 20mm length from the holed metal strip
- 6 Glue the metal strip in the slot
7. The colour is left to your own design. However we recommend varnishing as a finish

Patterns

Scale 1 : 1



Holed metal strip