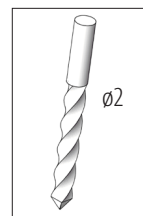


123.115

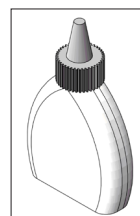
Opitec Easy-Line Flower Box "Jürgen"



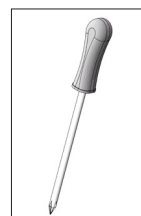
Required Tools:



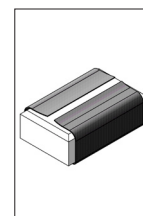
Drill Bits



Wood Glue



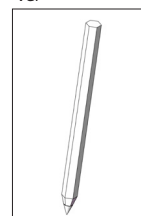
Philips Screwdriver



Sandpaper



Ruler



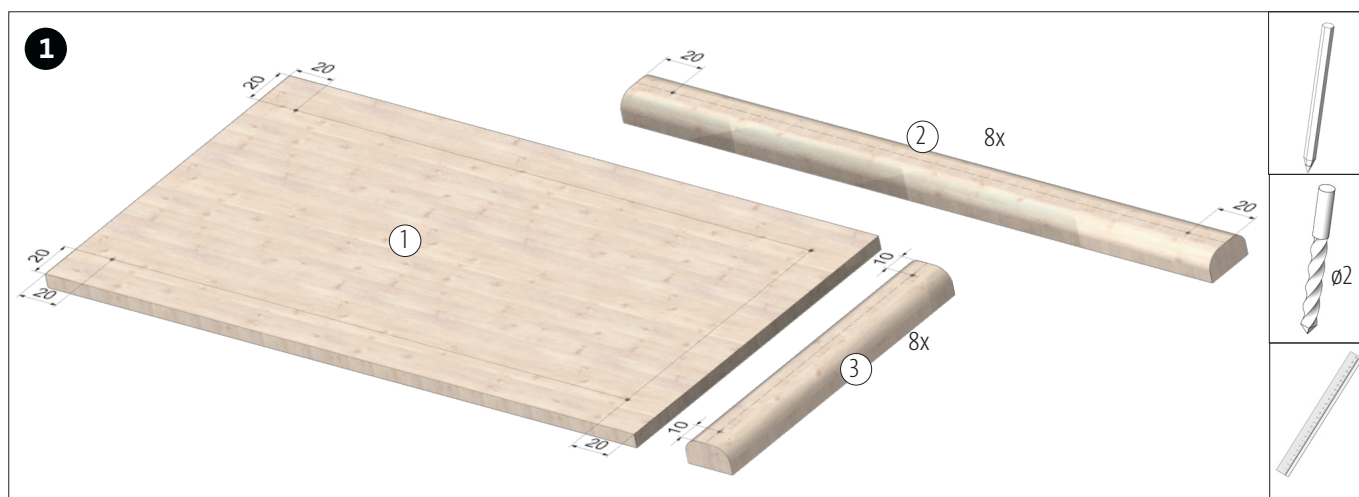
Pencil

Note

The Opitec Range of projects is not intended as play toys for young children. They are teaching aids for young people learning the skills of craft, design and technology. These projects should only be undertaken and operated with the guidance of a fully qualified adult. The finished projects are not suitable to give to children under 3 years old. Some parts can be swallowed. Danger of suffocation!

Components List	Quantity	Size (mm)	Description	Part-No.
Wooden board	1	320x165x8	base plate	1
Profiled wooden strips	8	320x23x15	sidebar	2
Profiled wooden strips	10	150x23x15	sidebar/stand	3
Wooden strips	4	95x20x10	connecting strip	4
Chipboard screws	36	ø3x25	fastening side panels	5
Chipboard screws	4	ø3x20	fastening base plate	6

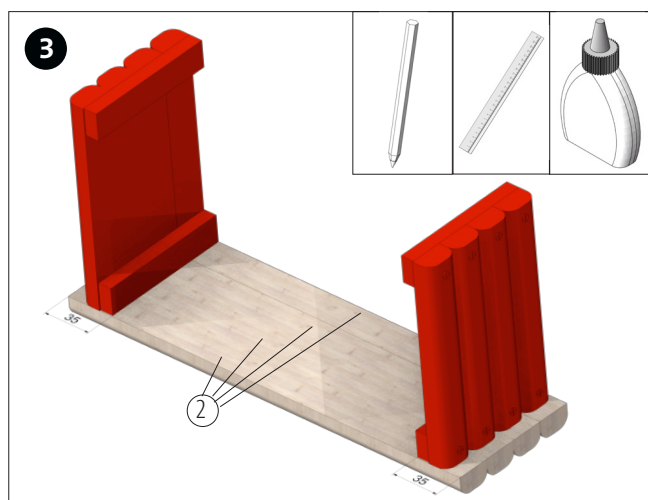
Instructions 123.115
Opitec Easy-Line Flower Box "Jürgen"



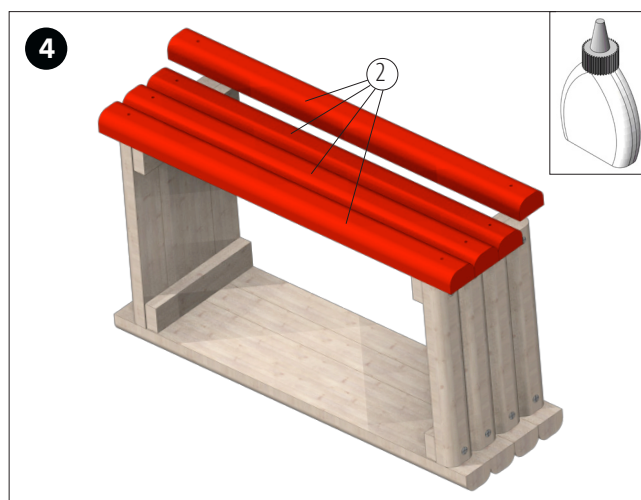
Mark the position of the holes on the wooden board (1) and on the profiled wooden strips (2+3) and drill $\varnothing 2$ mm through them.
Note : 2 profiled wooden strips (3) remain without hole!



Glue 4 profiled wooden strips (3) and 2 wooden strips (4) each to form a side panel as shown. Then fix with the 8 screws (5). Repeat it with the remaining 4 drilled profiled wooden strips (3) and 2 wooden strips (4).

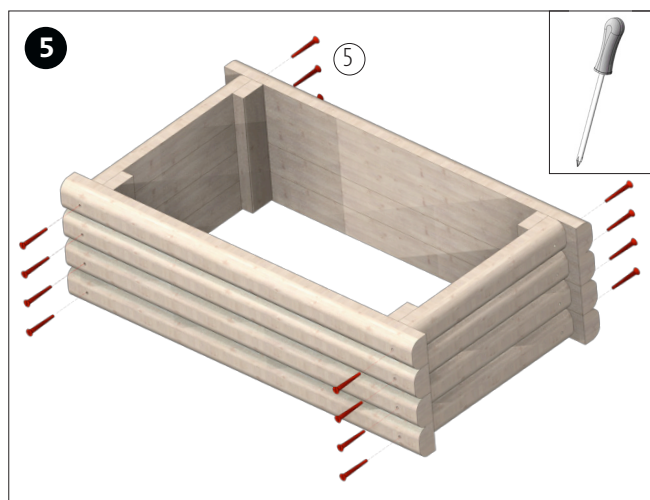


Glue the two side panels to 4 wooden strips (2) as shown. **Note**: Measure and mark position before gluing.

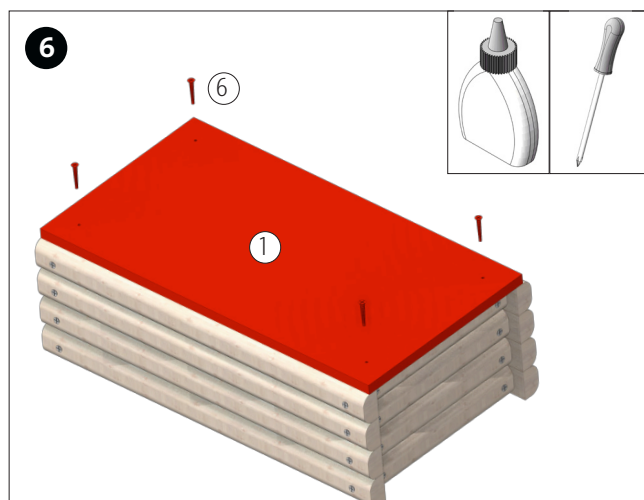


Glue on the remaining 4 profile strips (2) as shown. Let the glue dry well.

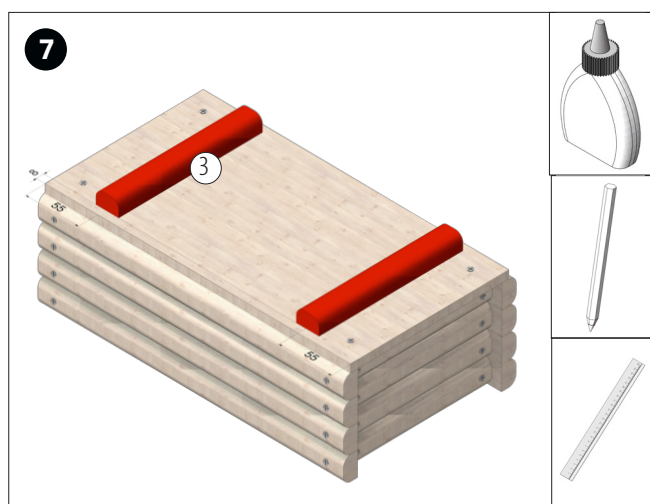
Instructions 123.115
Opitec Easy-Line Flower Box "Jürgen"



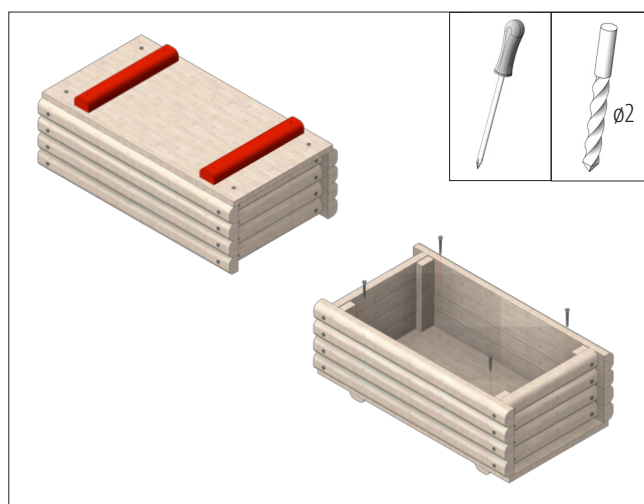
Fasten the panels with the screws (5) as shown.



Glue on the base plate (1) and fix it with the screws (6).



Finally glue on the two undrilled wooden strips (3).



Pre-drill the base plate through the holes in the baseboards $\varnothing 2$ mm. Then fix it with the remaining 4 screws (5).

