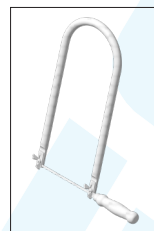


125.324

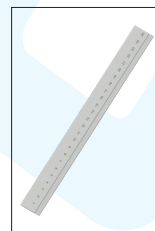
# Throwing game



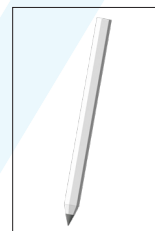
## Tools needed:



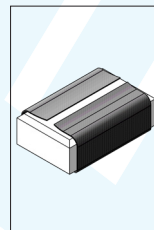
Fretsaw



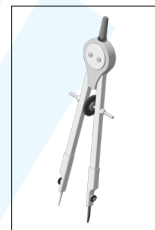
Ruler



Pencil



Sandpaper



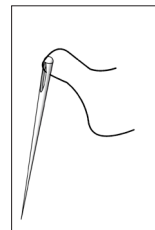
Circle



Drill



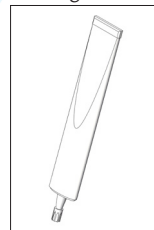
Wood glue



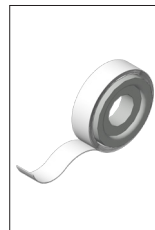
Needle &amp; Thread



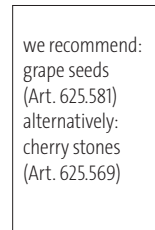
Scissors



Textile adhesive



Adhesive tape



Filling material

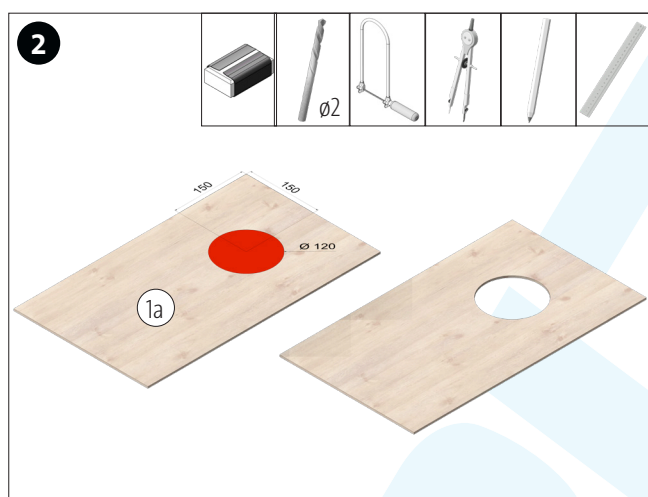
## NOTE:

After completion, the OPITEC work kits are not articles with toy character of a generally commercial kind, but teaching and learning aids to support educational work. This kit may only be built and operated by children and young people under the guidance and supervision of competent adults. Not suitable for children under 36 months. Danger of suffocation!

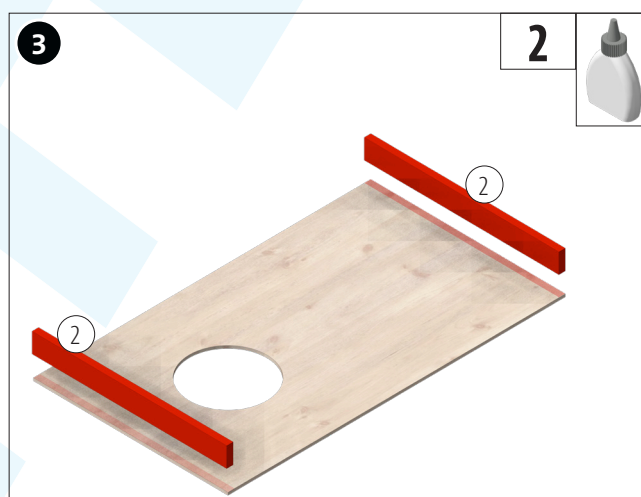
Parts list	Quantity	Dimensions (mm)	Designation	Part no.
Plywood	1	600x300x4	Base plate	1
Wooden strip	2	300x30x10	Frame rail	2
Wooden strip	2	500x30x10	Frame rail	3
Wooden strip	2	250x20x20	Legs	4
Round bar	1	ø8x300	Connection legs	5
Cotton fabric	1	500x250	Fabric bag	6



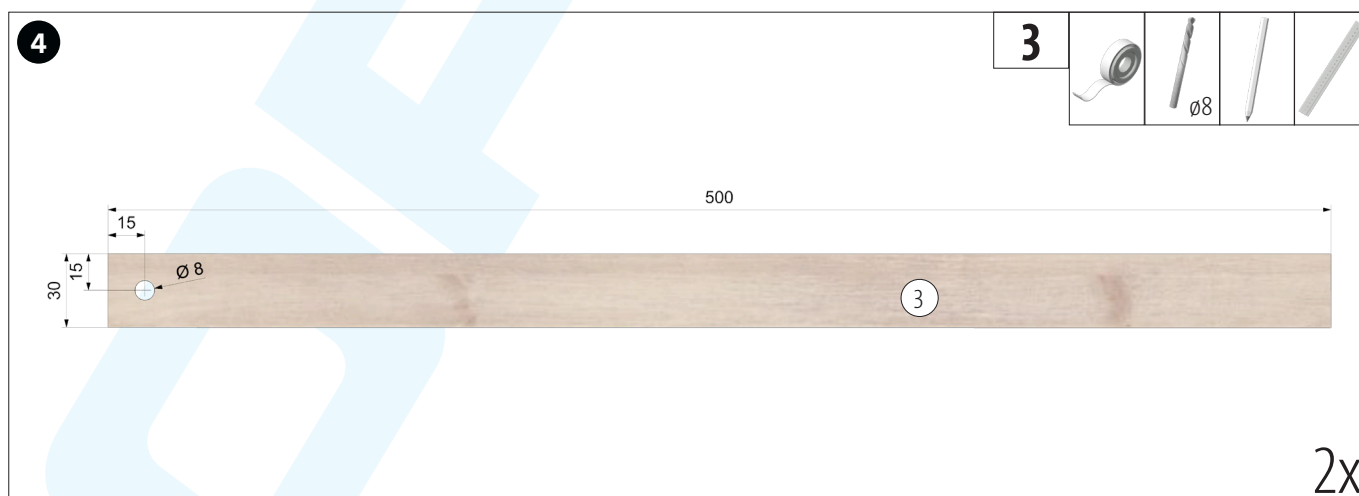
Divide the base plate (1) into two parts (1a/1b) with the fretsaw as shown. Then clean the saw cuts.



Mark the position of the throwing hole on the cover plate (1a), saw it out and clean the saw cut.

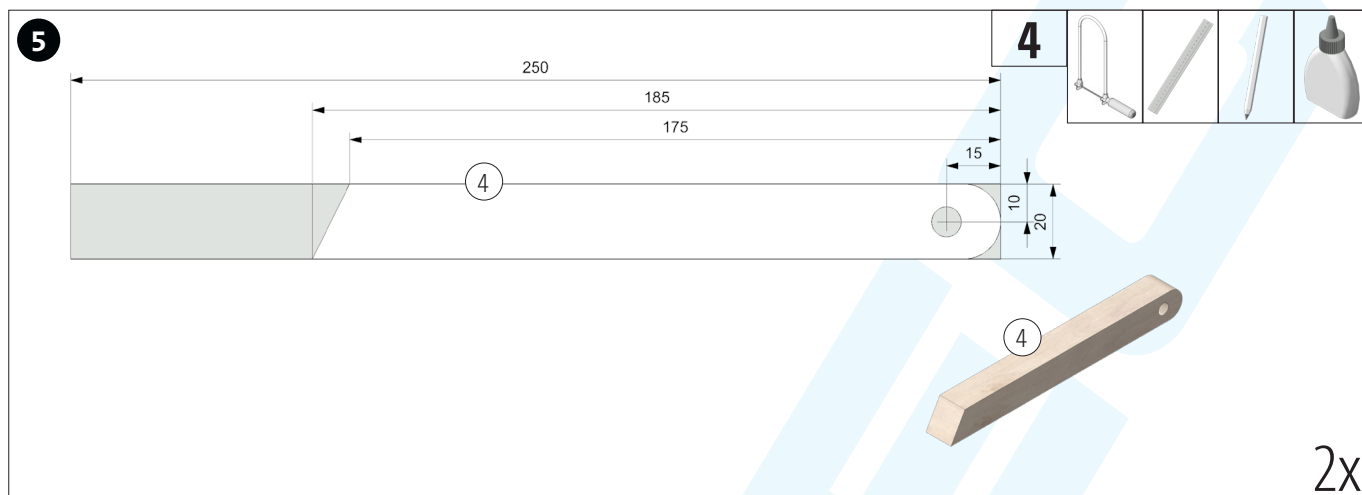


Glue the two end strips (2) onto the base plate as shown.

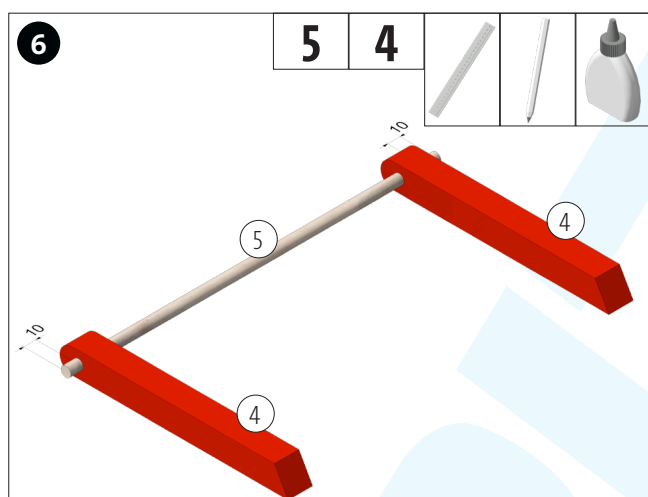


Measure and mark the position for the hole on the frame strips (3) as shown in the illustration. Then drill through  $\varnothing 8$  mm.

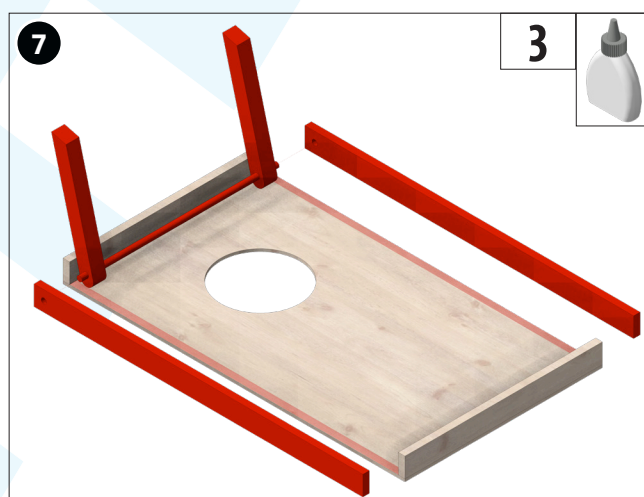
**NOTE:** To ensure that the holes in both frame rails are aligned, fix them in place with adhesive tape before drilling.



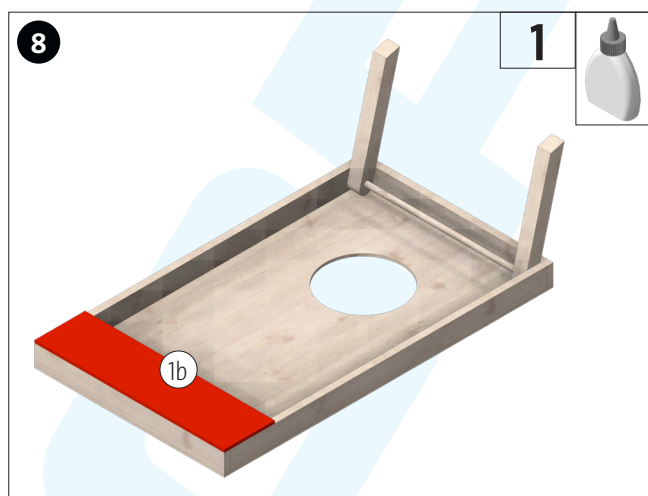
Cut the two support legs (4) to length according to the dimensions. Measure and mark the position of the hole. Then drill a  $\varnothing 8$  mm hole. Clean the saw cuts.



Glue the two feet (4) onto the round rod (5) as shown. Let the glue dry well.



Then glue on the two side slats (3) and place the round rod with the feet in between in the  $\varnothing 8$ mm holes. Let the glue dry well.

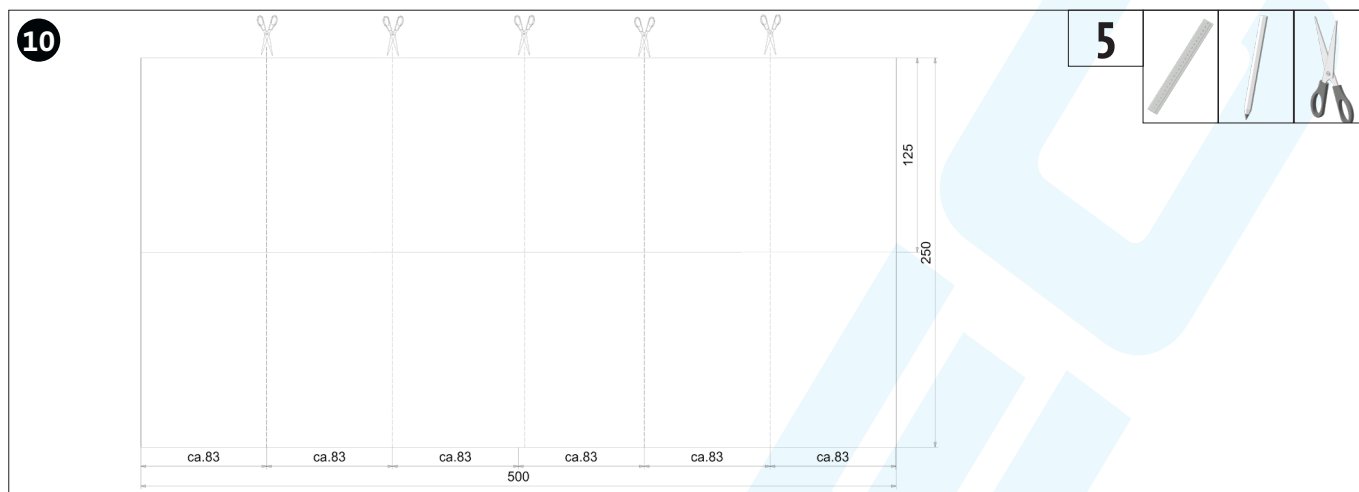


Glue on the wooden board for the storage compartment (1b) as shown.

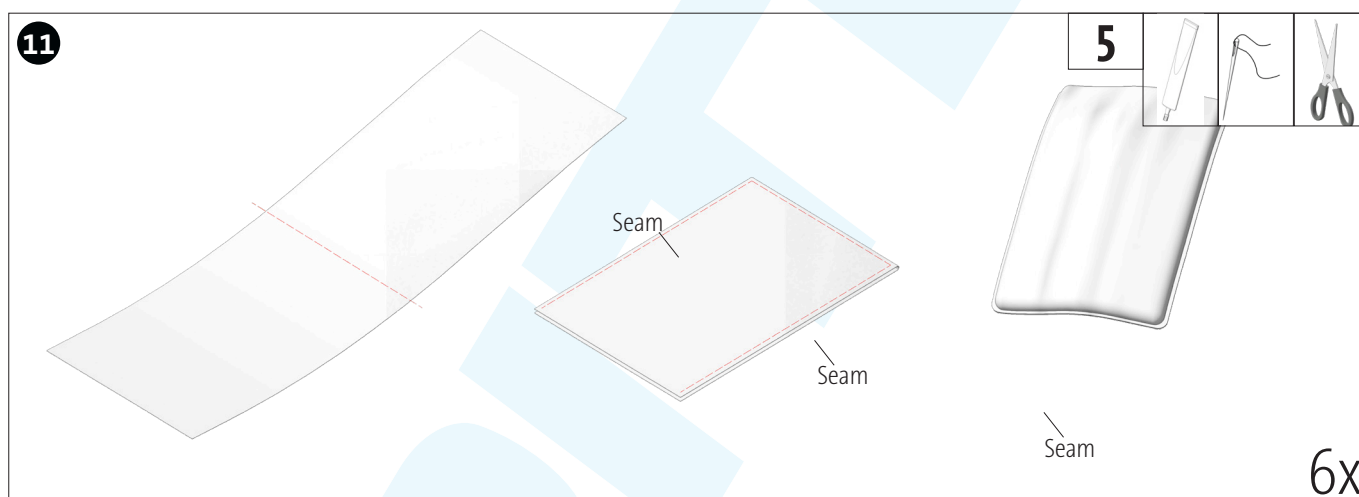


Then sand everything clean and check that the stand can move freely.

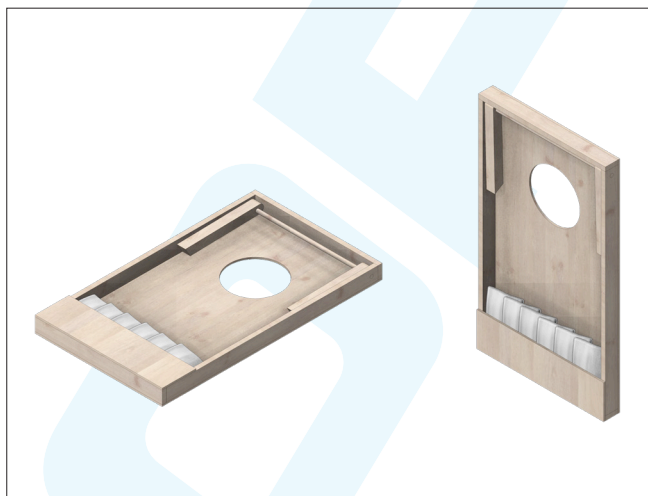
**Building instruction 125.324**  
**Throwing game**



Divide the cotton fabric (5) into 6 equal strips and cut to size.



Fold the cotton strips in the middle. Sew the two long sides as shown or alternatively glue them with textile glue. Turn inside out and fill with grape seeds (approx. 50 g per bag) or alternatively cherry seeds. Then close or glue with another seam.



To store, simply place the bags in the compartment on the back and fold in the feet.

**GAME INSTRUCTIONS:**

In a round, two players take turns throwing one throwing bag after the other onto the board opposite them. If the bag remains on the board, 1 point is scored; if it falls into the hole, the player receives 3 points. The number of points achieved is then calculated and included in the total score. The player with the most hits (points) wins.