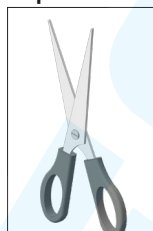


124,889

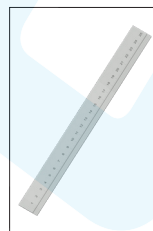
Key ring Screw Man



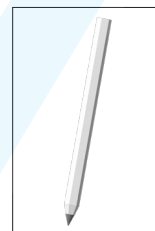
Required Tools:



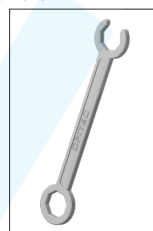
Scissors



Ruler



Pencil



Wrench



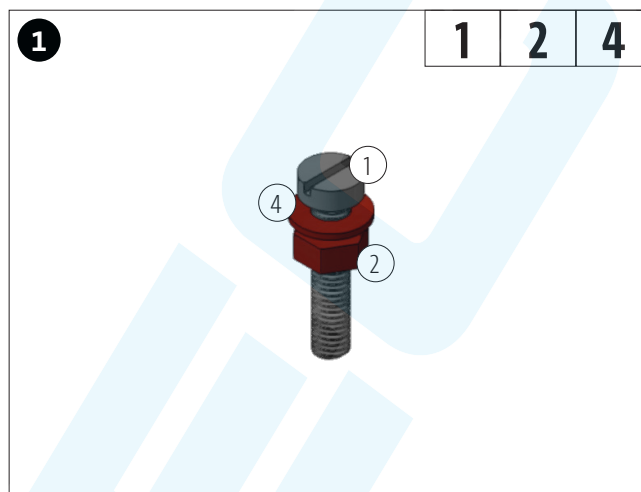
Screwdriver

Note:

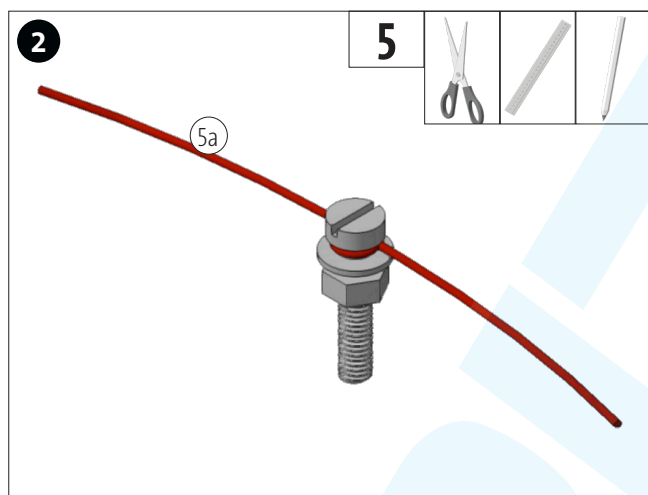
After completion, the OPITEC factory packs are not toys that are generally commercially available, but teaching and learning materials to support educational work. This kit may only be built and operated by children and young people under the guidance and supervision of knowledgeable adults. Not suitable for children under 36 months. Danger of suffocation!

Components	Quantity	Dimensions (mm)	Description	Part No.:
Cylinder Head Bolt	10	M4x20	body, hat	1
hex nut	30	M4	body, body	2
Wing Nut	20	M4	arms, legs	3
Washer	10	ø9 / ø4.3 inside	Hat	4
Cord	1	ø1x2000		5

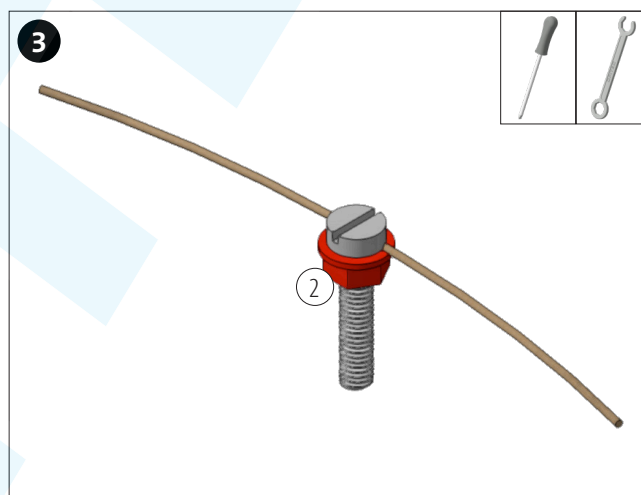
The content of this work kit is sufficient for a total of ten "screw manikin keyring pendants". In the following steps, the structure for a screw manikin is shown and explained.



Screw the washer (4) and hexagon nut (2) onto the cylinder head screw (1).



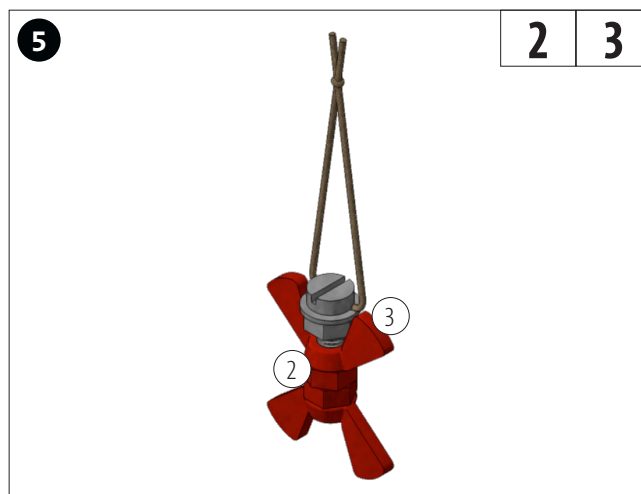
Cut a piece approx. 150 mm long from the cord (5) and tie it between the screw head and the washer (4).



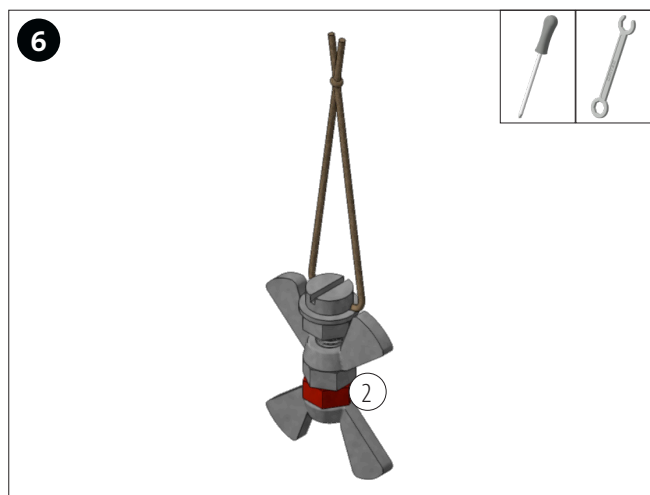
Screw the hexagon nut (2) against the screw head.



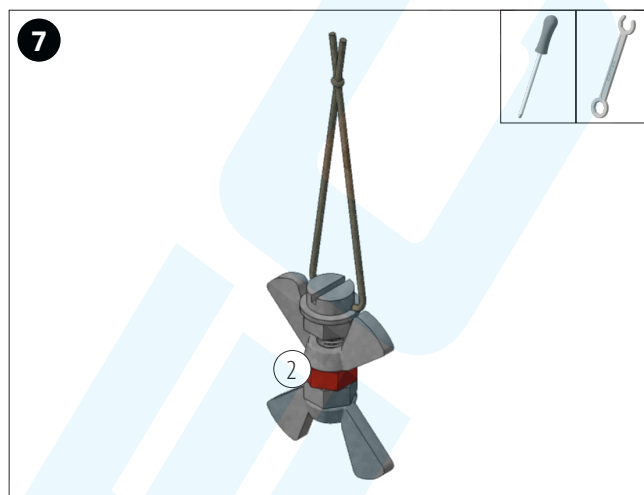
Knot the cord (5a) as shown.



Screw on the wing nut (3) and hexagon nut (2) as shown so that the lower wing nut is flush with the cylinder head screw (1).



Screw the hex nut (2) against the lower wing nut (3).



Screw the hexagon nut (2) against the lower hexagon nut.



Orient the upper wing nut (3) as shown.

FINISHED!