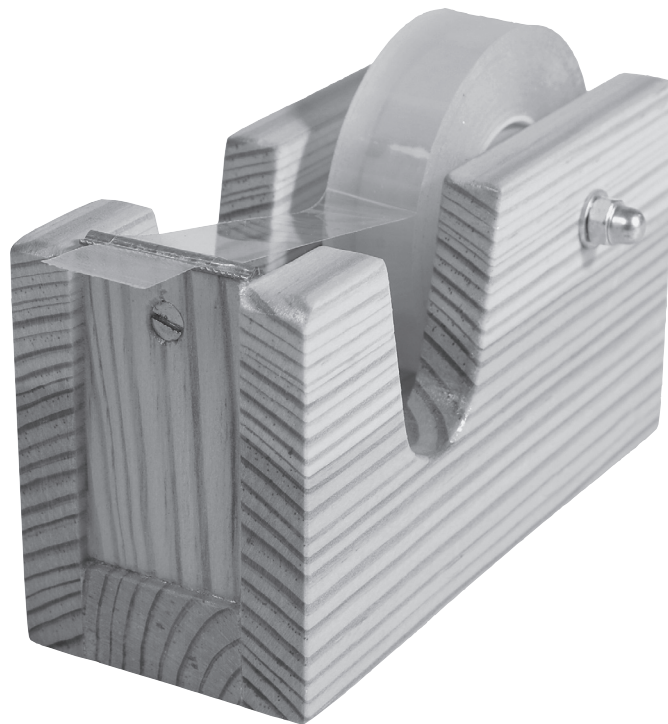


OPITEC

Hobbyfix

1 0 6 . 8 4 3

Sellotape roller



Necessary tools:

Pencil, ruler, set square
Forstner bit 20mm diameter
Drills 3mm + 4mm diameter
Countersink
Screwdriver
Spanner 5.5mm (M3) +7mm (M4)
Fine saw and mitre block
Rasp, wood file, sandpaper
Metal saw
Wood glue
Paint, brush

Parts list:

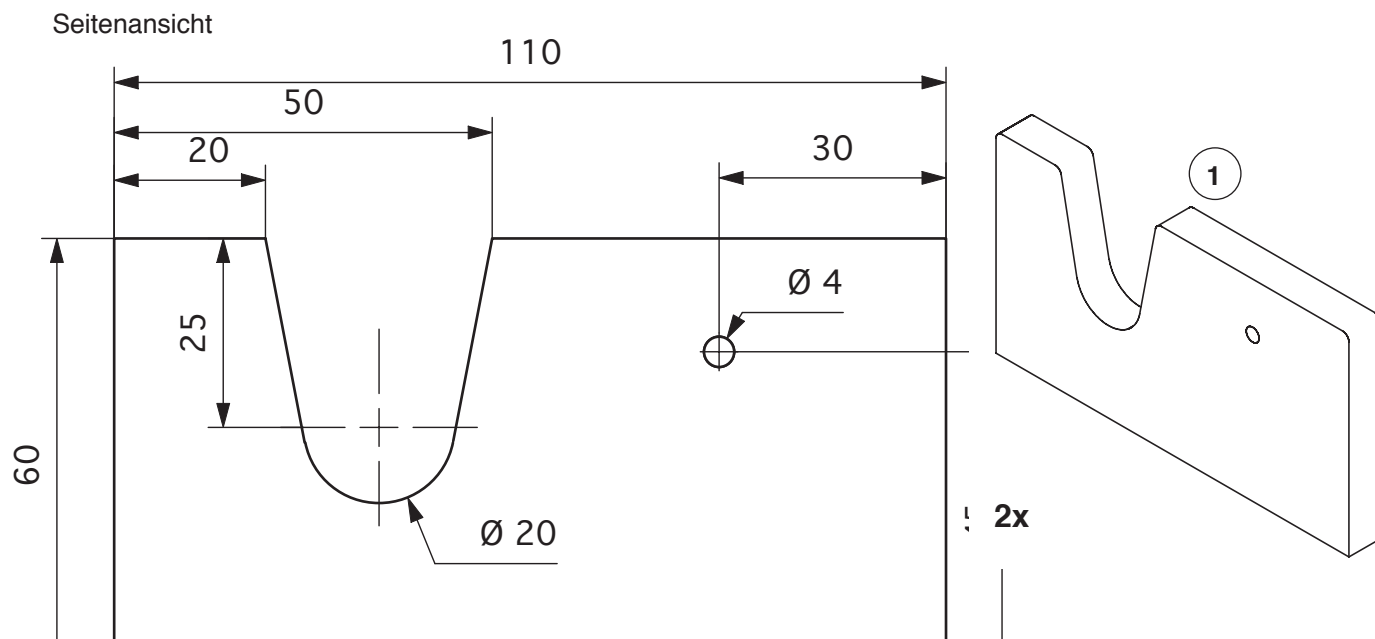
2x Pine strip (1)	10 x 60 x 150 mm
2x Pine strip (2)	10 x 25 x 150 mm
1x Pine strip (3)	20 x 20 x 50 mm
1x cutter (4)	
1x Screws (5)	M3 x 16 mm
1x Nut (6)	M3 mm
1x Set screw (7)	M4 x 50 mm
1x Domed nut (8)	M4 mm
1x Washer (9)	M4 mm
1x Foam sheet (10)	2 x 90 x 95 mm

Please Note

The OPITEC range of projects is not intended as play toys for young children. They are teaching aids for young people learning the skills of Craft, Design and Technology. These projects should only be undertaken and tested with the guidance of a fully qualified adult. The finished projects are not suitable to give to children under 3 years old. Some parts can be swallowed. Danger of suffocation!

Working steps:

1. Saw two pieces from the pine strip (1) 10 x 60 x 150mm, each 110mm long, use a mitre block to ensure a right angle.



2. Cut from the pine strip (2) 10 x 25 x 150mm a piece 50mm long (2a) and a piece 110mm (2b).

3. Blade (2a) can be made in 2 versions

Version 1: Drill the 3mm hole and from the front 2mm deep according to the plan

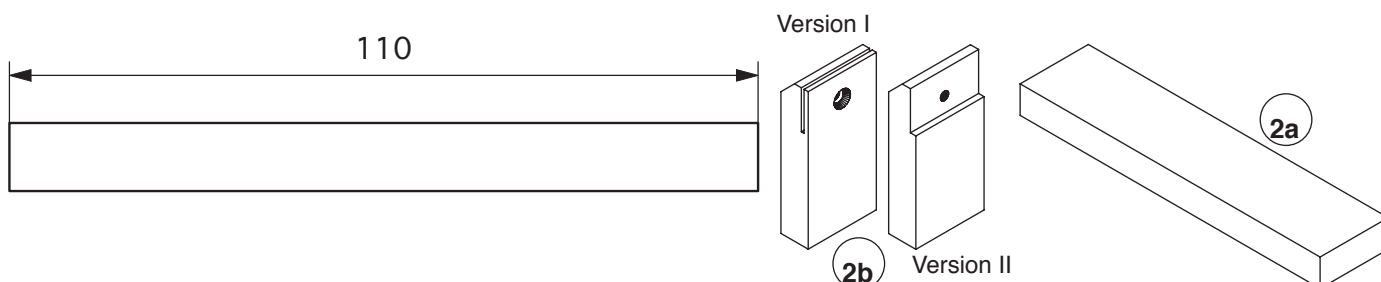
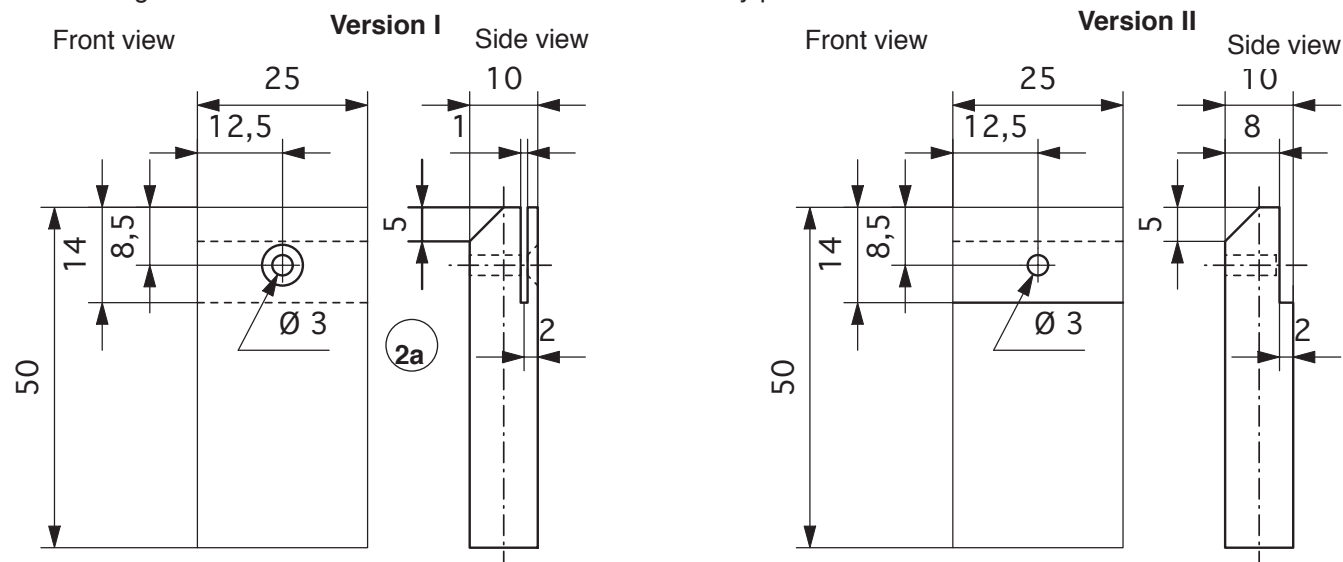
Use a fine saw to cut the slot 14mm deep for the cutter.

Note: Make sure it is in the correct side!

Version II: Drill the 3dia.mm hole according to the plan

Use a fine saw or a rasp to make the 2mm deep cut out

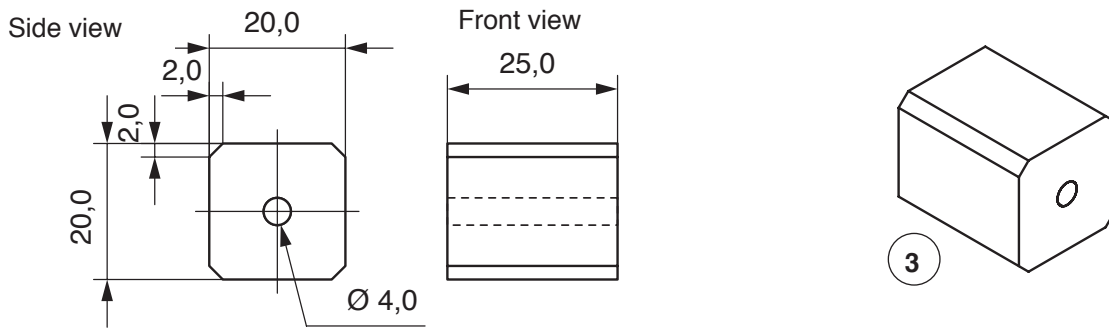
The angle on both versions can be made with a file. Finally parts 2a+2b sand to finish



Working steps:

4. Saw the pine strip (3) 20 x 20 x 50mm in half

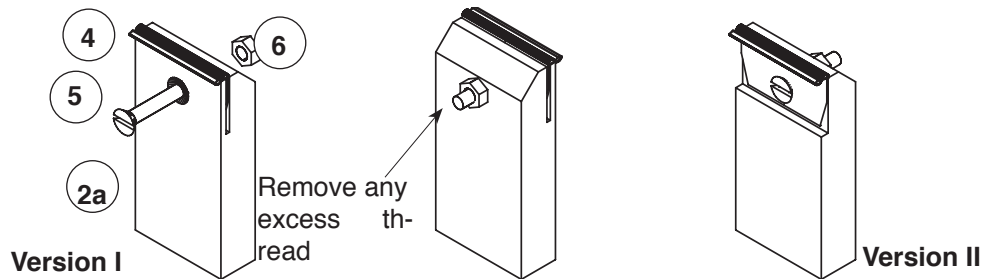
Drill a 4mm dia hole through the end in the middle. File the edges (Check size with the centre of a sellotape roll)
Finish and sand the holder (3).



5. Version I:

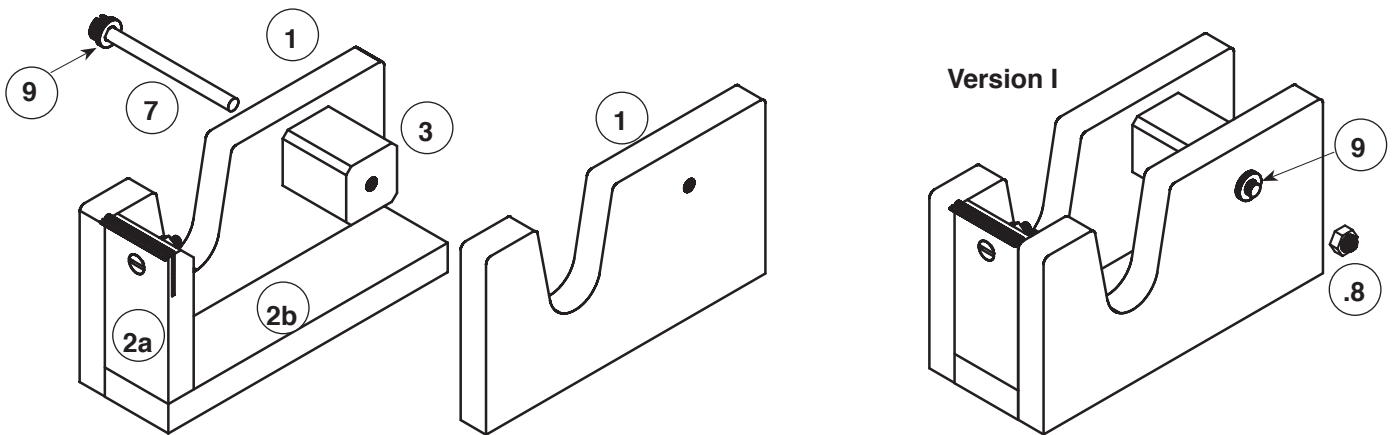
Press the tape cutter (4) with the sharp edge against the sloping edge, into the slit of the cutter holder (2a) Fix the tape cutter in place with the set screw (5) nut (6) in the holder

File off any protruding excess thread from the set screw.

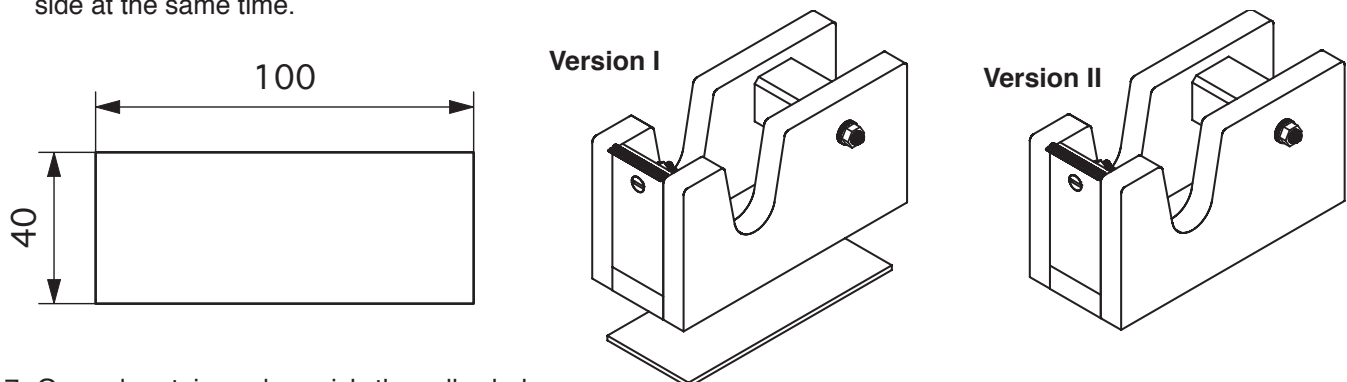


6. Glue the side parts together (1) cutter holder (2a) and base (2B) according to the plan.

Then as spacer add the roll holder (3) use a set screw (7) washer (9) and domed nut (8) mounting the second



side at the same time.



7. Once dry stain and varnish the roller holder the colour of your choice . To do this firstly remove the sellotape roll holder.