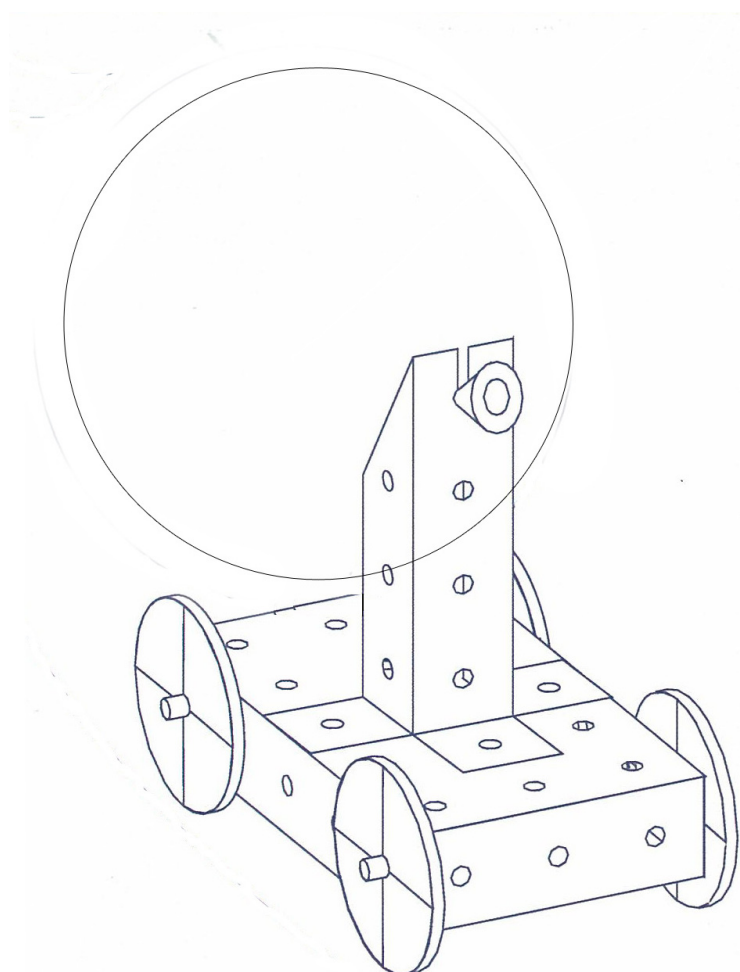


# OPITEC

206.668

## Balloon Powered Vehicle



### Necessary Tools

Scissors  
Craft knife  
Hole punch  
Steel ruler

### Please Note

The OPITEC range of projects is not intended as play toys for young children. They are teaching aids for young people learning the skills of Craft, Design and Technology. These projects should only be undertaken and tested with the guidance of a fully qualified adult.

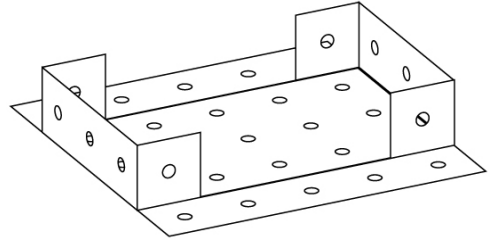
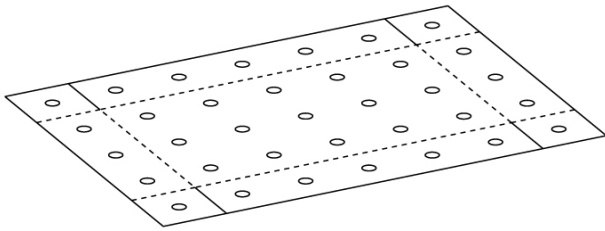
The finished projects are not suitable to give to children under 3 years old. Some parts can be swallowed. Danger of suffocation!

Parts list				
	Part number	Size in mm	Description	Part no.
Basic chassis	1	125x175 (5x7 hole)	Chassis	1
Strips	1	75x250 (3x7 hole)	Supports	2
Wheels	4	Ø 40	Wheels	3
Dowel	2	Ø 5 x 100	Axle	4
Balloon	2		Drive	5

# INSTRUCTIONS

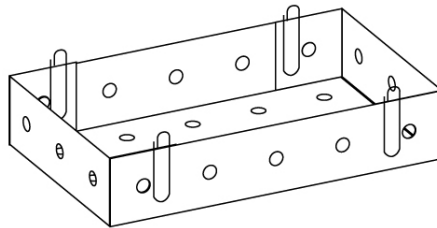
## Step 1

On the ends of the chassis base make a cut on each corner, score the broken lines and fold the shape of the chassis as shown



## Step 2

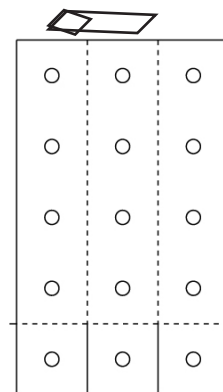
Apply glue to the folded ends, bend up the sides and hold them in place until dry with paper clips.



## Step 3

Shorten the holed strip (2) to 6 holes long as shown. Cut along the line. Score the broken line on the back.

Scored line



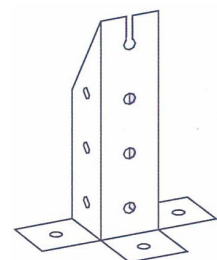
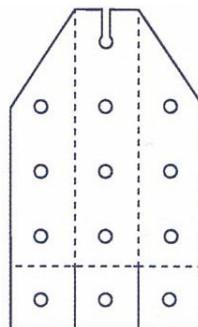
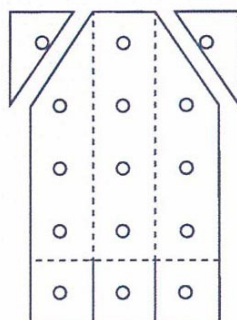
Score on the back

Cut here

## Step 4

Cut the holed strip at an angle as shown

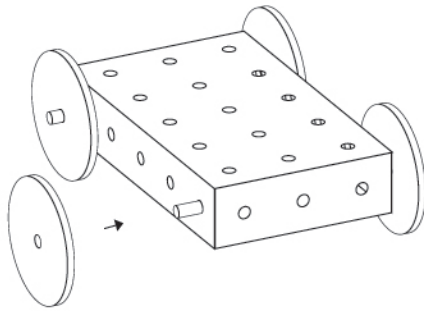
Cut a 2-3mm slot up to the middle hole. Enlarge the hole with a punch ( Better airflow) Fold the support.



# INSTRUCTIONS

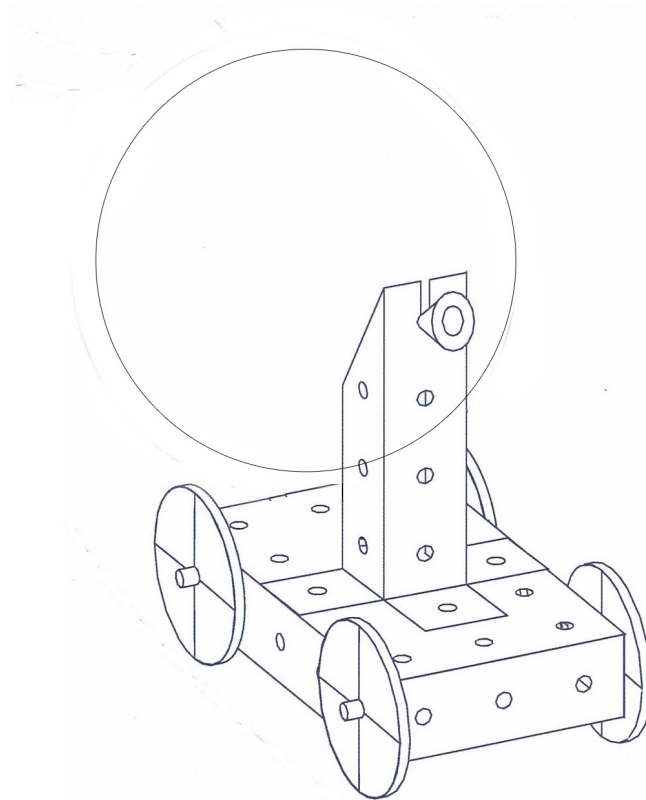
## Step 5

Insert the dowel axles (dowel 4) in the holes in the chassis then add the wheels (3). Adjust the axles so that they turn freely.



## Step 6

Place the folded support in the middle of the chassis and glue it in place. Leave to dry.



## Step 7

Inflate the balloon (6) and place it in the slot on the support as shown. The vehicle will travel at speed as the balloon deflates.