

Shove disc



Necessary tools:

Fretsaw
File,sandpaper
Wood glue
Pencil
Ruler
Hammer
Paper clip
Scissors
Paints/ brush

Please Note

The OPITEC range of projects is not primarily intended as toys for young children. It is for teaching, designing and making and to ensure that pupils experience a range of tools and processes.

PARTS LIST				
Plywood	1	350x260x4	Base	1
Wood strip	2	350x40x15	Frame	2
Wood strip	3	250x40x10	Frame	3
Wooden wheel	16	20	Playing piece	4
Rubber band	1	1x1.5	Rubber band catapult	5
Nail	ca. 20	1,0x15	Fixing	6
Drawing pin	4		Rubber band fixing	7

INSTRUCTIONS

General:

This craft pack will allow you to make two different variations:

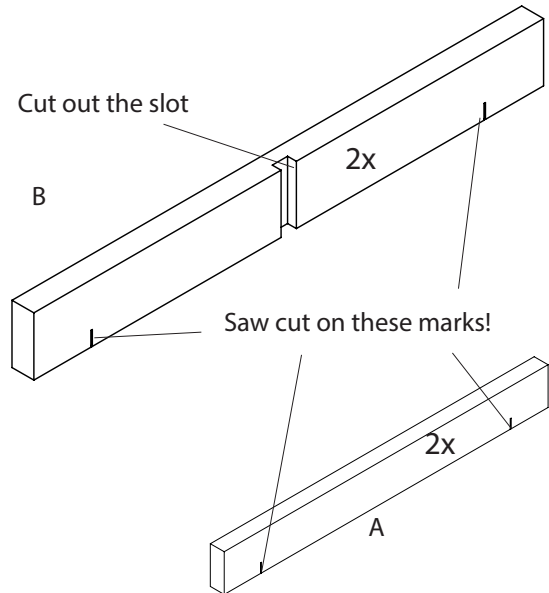
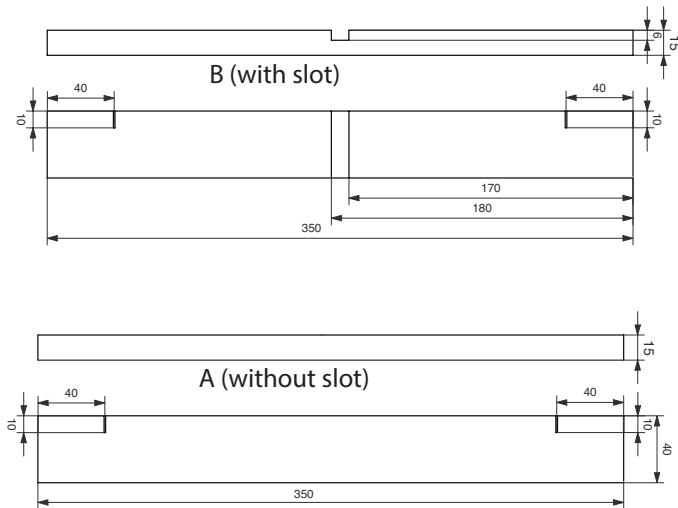
A - Simple version (Fixed middle strip)

B - More difficult version (Middle strip "2 play variation")

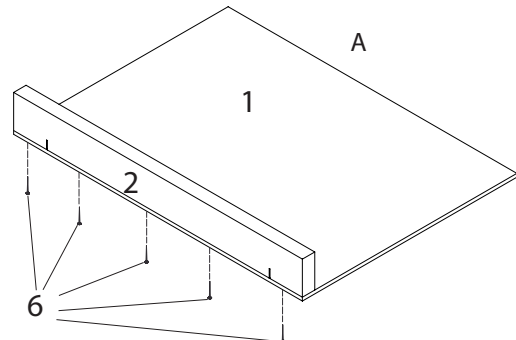
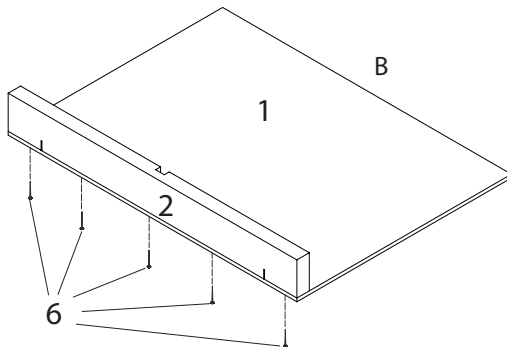
We will describe B.

1. Mark out the wood strip (2) as shown on page 5/6

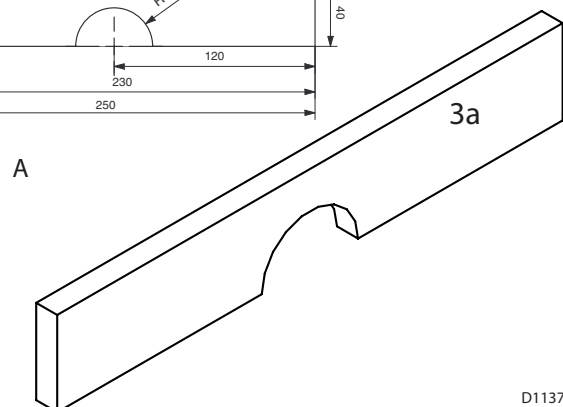
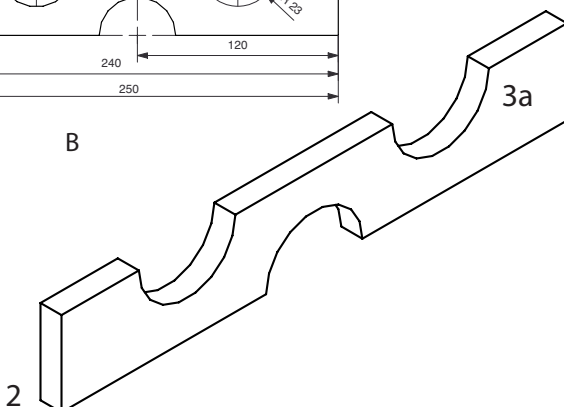
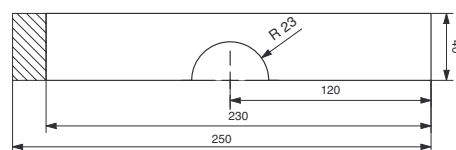
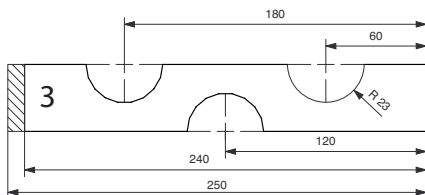
2. Cut the slot (40x10mm) with a saw 6mm deep. Remove the waste a small piece at a time and then file to finish. Make the two saw cuts ca 10mm deep. Widen these to ca. 1-2mm.



3. Glue one of the side parts (2) as shown, with the slot facing inwards and the saw cuts facing down, on to the base (1). Glue the end strip and fix with 5 pins (6) Leave to dry!

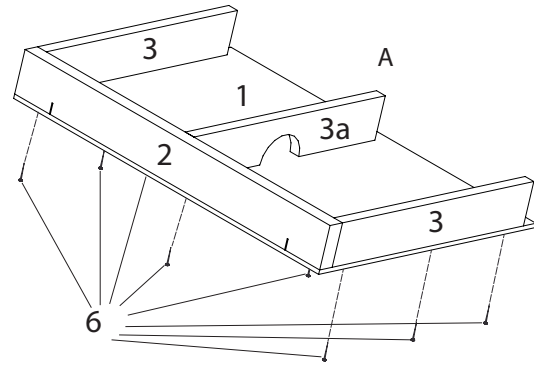
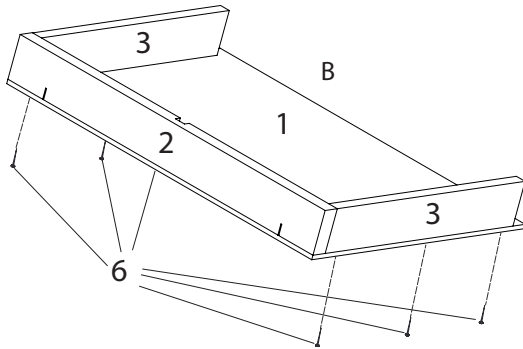


4. Mark out the semi-circles on the wooden strip (3) as shown on pages 5/6 . Saw out the shapes with a fretsaw and sand to finish

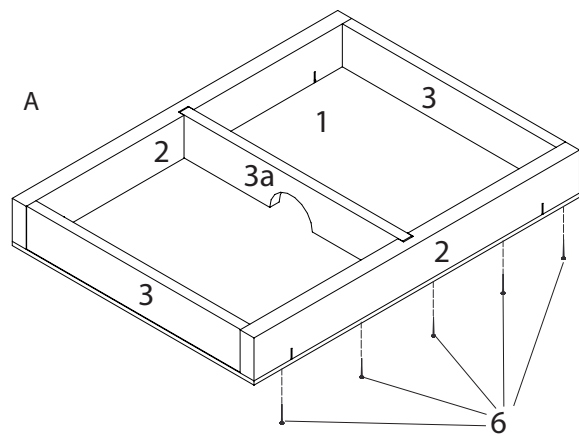
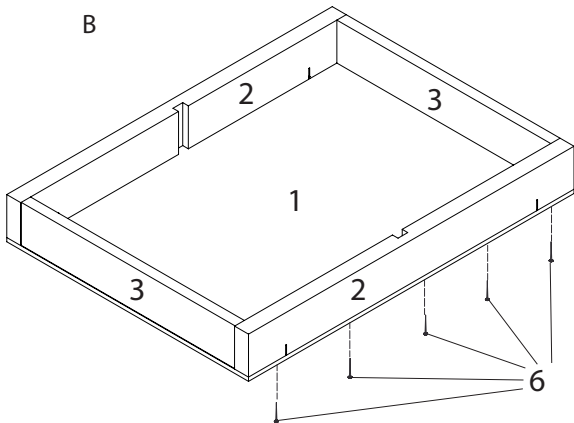


INSTRUCTIONS

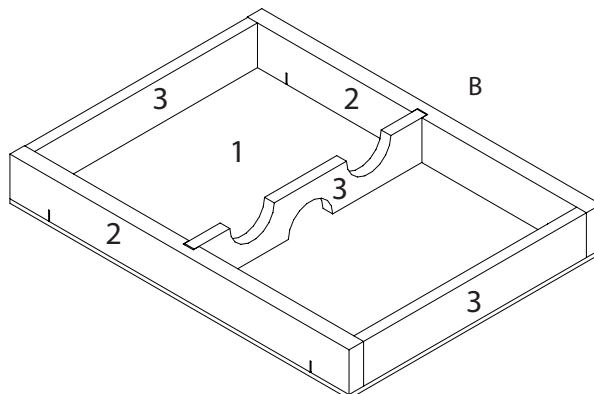
5. Cut two wooden strips (3) to 230mm long. Sand the ends. Glue the wood strips (2) in place on the bases. Leave to dry. In variation 1 glue the middle strip (3) in place. Glue the end wooden strip in place and fix it with 3 nails



6. Place the second wooden strip (2) in position with the saw facing inwards and the saw cuts facing downwards (3) on to the base. Take the wooden strip (2) and fix it on the back with 5 nails. Leave to dry.



7. Place the finished wooden strip (3a) as shown in the slots in the sides (2) (Variation 2)



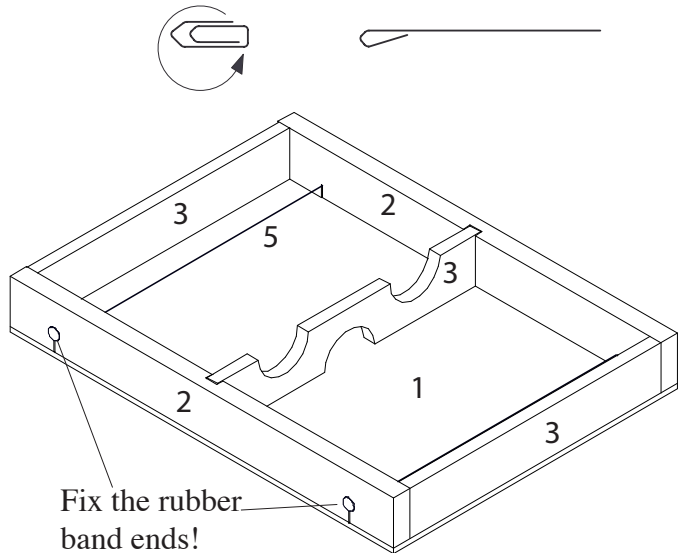
INSTRUCTIONS

9. Take a rubber band (5) and cut it in the middle. Bend a paper clip into a nail shape. Thread the rubber band end through the eye in the paper clip and then thread the paper clip through the saw cut in the edge strip. Fix it on the outside with a drawing pin (7).

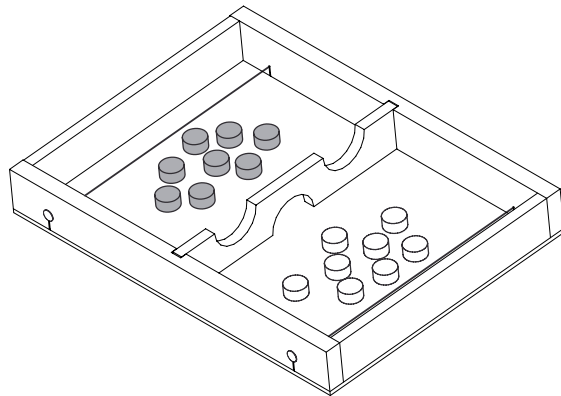
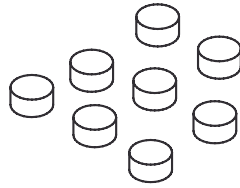
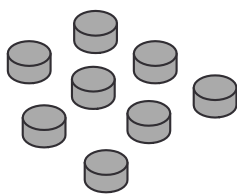
Stretch the band across the frame and do the same thing on the other side fixing it in place with a drawing pin.

Note:

The rubber band should not be overtight!



10. Paint half of the playing pieces (4) so that they are different from the others
8 playing pieces on each side



Rules of the game: the person who can get more of their pieces in the opponents field is the winner!