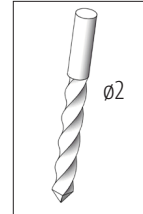


122.876

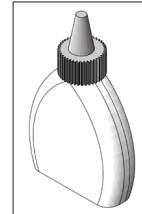
# Opitec Easy-Line Flower Box "Harald"



## Required Tools:



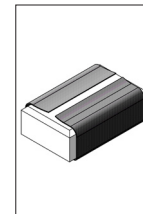
Drill Bit



Wood Glue



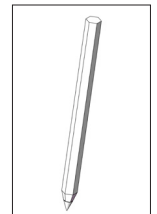
Philips Screwdriver



Sandpaper



Ruler



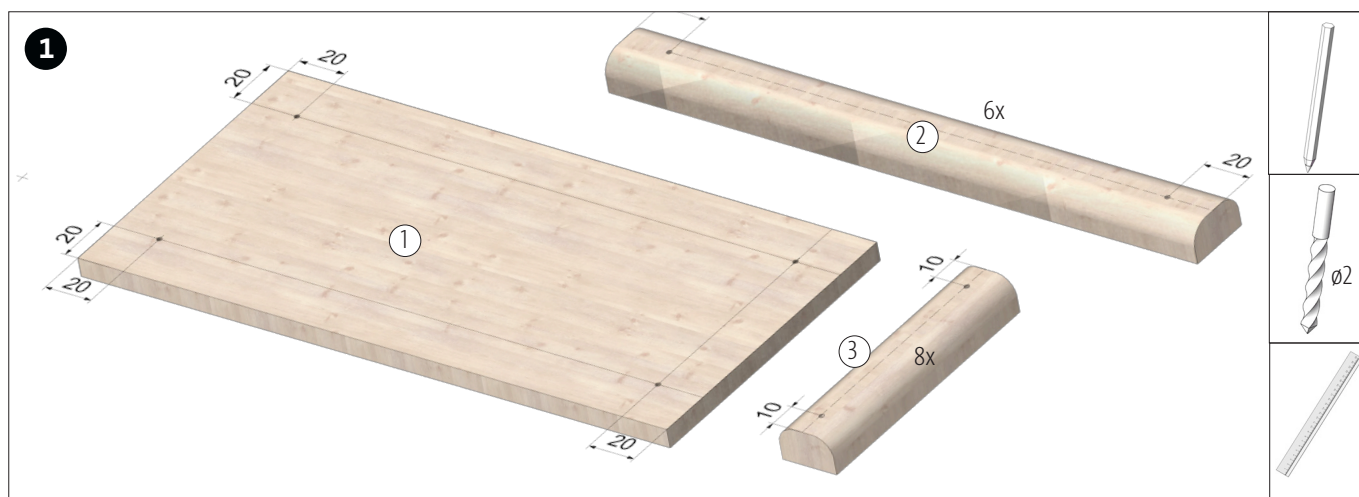
Pencil

## Note

The Opitec Range of projects is not intended as play toys for young children. They are teaching aids for young people learning the skills of craft, design and technology. These projects should only be undertaken and operated with the guidance of a fully qualified adult. The finished projects are not suitable to give to children under 3 years old. Some parts can be swallowed. Danger of suffocation!

| Components List        | Quantity | Size (mm) | Description          | Part-No. |
|------------------------|----------|-----------|----------------------|----------|
| Wooden board           | 1        | 260x115x8 | base plate           | 1        |
| Profiled wooden strips | 6        | 260x23x15 | sidebar              | 2        |
| Profiled wooden strips | 8        | 100x23x15 | sidebar/stand        | 3        |
| Wooden strips          | 4        | 70x20x10  | connecting strip     | 4        |
| Chipboard screws       | 28       | ø3x25     | fastening side bars  | 5        |
| Chipboard screws       | 4        | ø3x20     | fastening base plate | 6        |

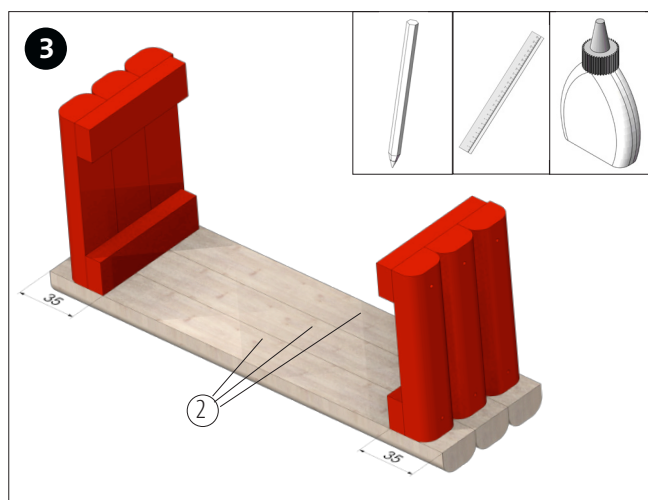
Instructions 122.876  
Opitec Easy-Line Flower Box "Harald"



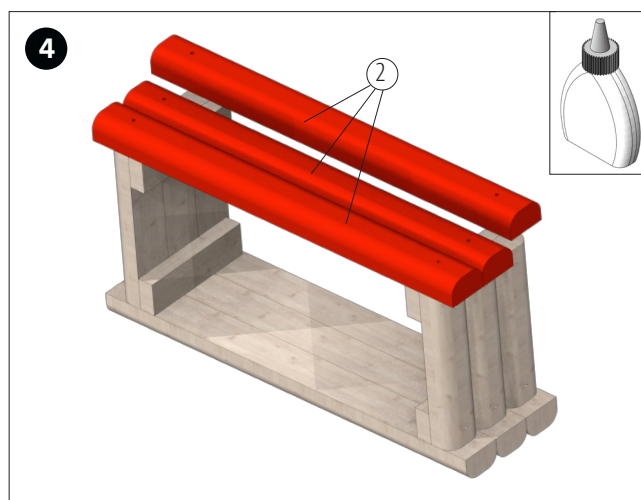
Mark the position of the holes on the wooden board (1) and on the profiled wooden strips (2+3) and drill  $\varnothing 2$ mm through them.  
**Note** : 2 profiled wooden strips (3) remain without hole!



Glue 3 profiled wooden strips (3) and 2 wooden strips (4) each to form a side panel as shown. Then fix with the 8 screws (5). Repeat it with the remaining 3 drilled profiled wooden strips (3) and 2 wooden strips (4).

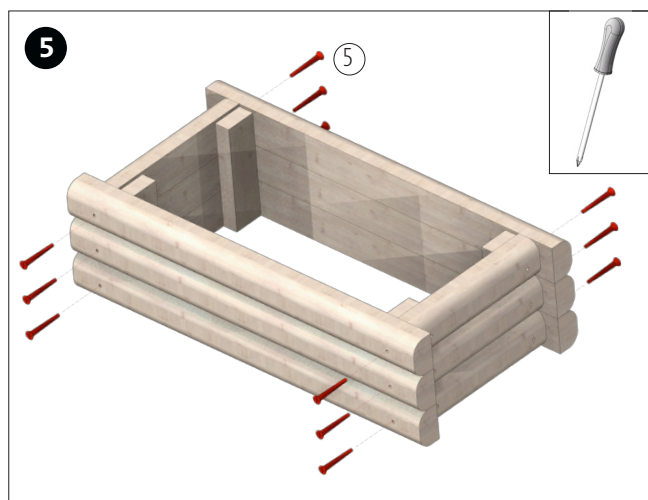


Glue the two side panels to 3 wooden strips (2) as shown. **Note**: Measure and mark position before gluing.

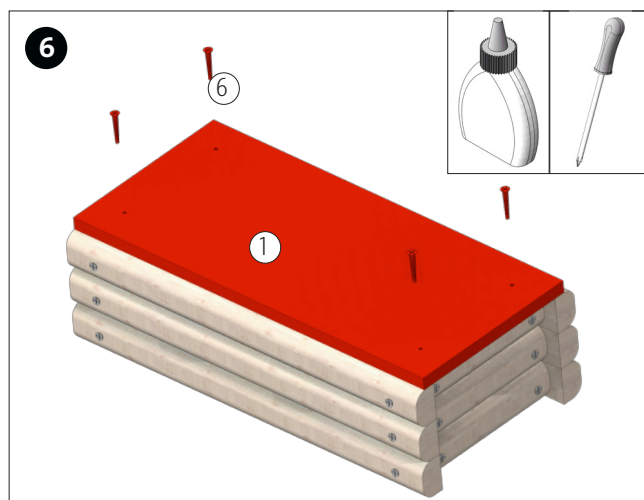


Glue on the remaining 3 profiled wooden strips (2) as shown. Let the glue dry well.

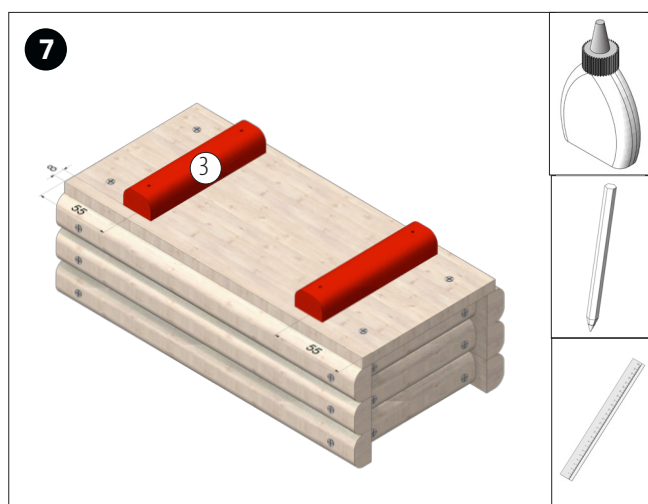
Instructions 122.876  
Opitec Easy-Line Flower Box "Harald"



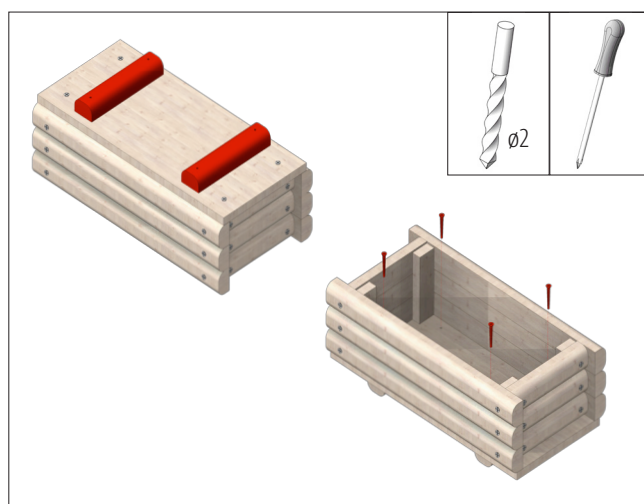
Fasten the panels with the screws (5) as shown.



Glue on the base plate (1) and fix it with the screws (6).



Finally glue on the two undrilled wooden strips (3).



Pre-drill the base plate through the holes in the baseboards  $\varnothing 2$  mm. Then fix it with the remaining 4 screws (5).

