

OPITEC

108.694

Fishing boat with pop- pop steam motor



Necessary tools:

Bradawl
Fretsaw
Hammer
Wood glue
2-Component glue
Paints,brush etc

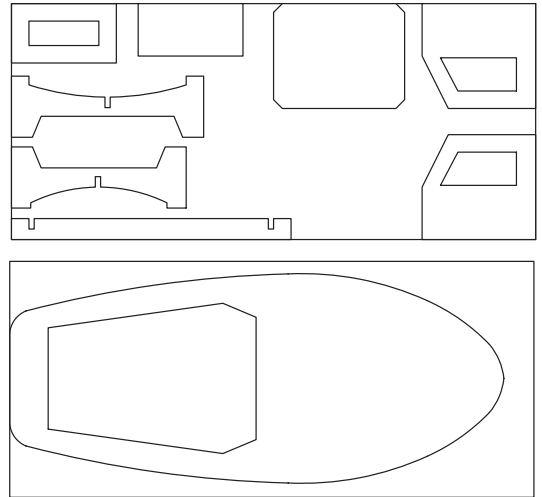
Please Note

The OPITEC range of projects is not intended as play toys for young children.They are teaching aids for young people learning the skills of Craft, Design and Technology.These projects should only be undertaken and tested with the guidance of a fully qualified adult. The finished projects are not suitable to give to children under 3 years old. Some parts can be swallowed. Dan- ger of suffocation!

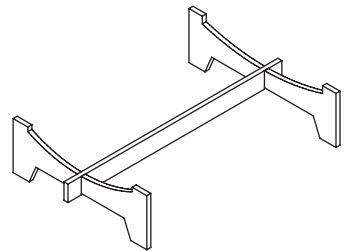
PARTS LIST				
	Quantity	Size in mm	Description	Part no
Plywood	2	300x135x3	Deck cabin,stand etc	1
Nails	15	15	Railing	2
Cord	1	500	Railing	3
Hull	1		Hull	4
Steam motor	1		Drive	5

INSTRUCTIONS

1. Trace the patterns for the deck (Page 7), the cabin (Page 5) and the stand (Page 5) on to the two plywood sheets (1) saw them out and sand to finish.



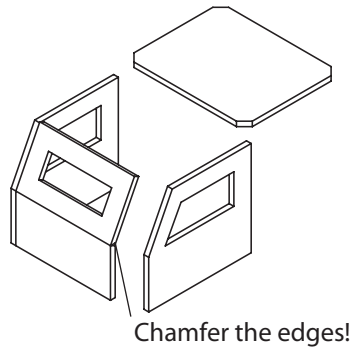
2. Glue the stand parts together as shown



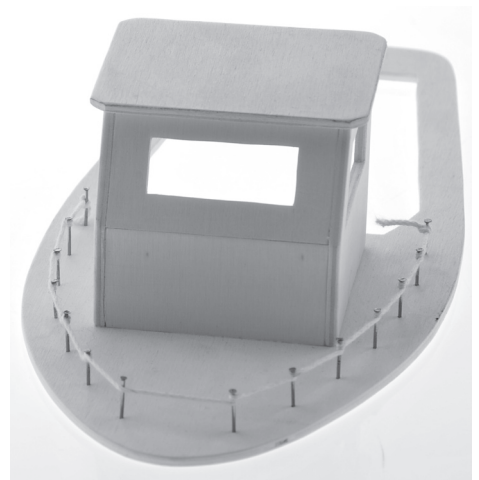
3. Assemble and glue the cabin together as shown.

Note

The top part by the windows must be chamfered so that the parts fit exactly and can be glued cleanly together!

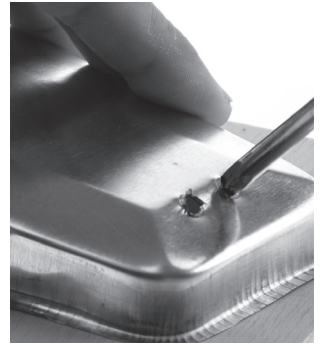
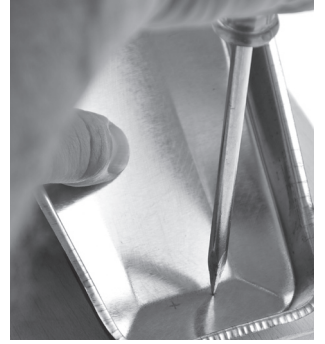


4. Use the nails (2) and the cord (3) to make up the railings on the bow
The cabin is glued in the middle ca. 10 mm from the hole in the deck and the stern



INSTRUCTIONS

5. Unpack the steam motor and mark out the distance between the tubes on the stern of the boat
Place the hull on a soft surface and raise the stern (Plywood sheet).
Use a bradawl/ holemaker to mark the holes and pierce them through the hull so that the tubes from the steam motor will pass through



6. Place the steam motor in the cut out in the hull and adjust to fit old Note:Rest it on a scrap of wood!

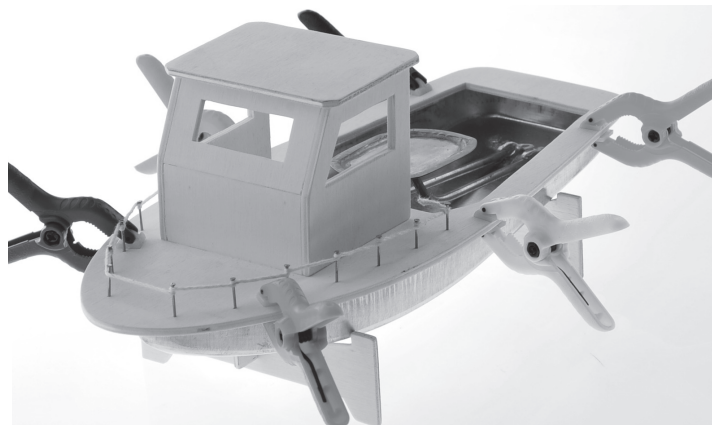
Glue the motor in place by the tubes . Use 2 component glue.
Let the glue dry thoroughly (Read instructions!).



7. Paint the deck.

Note:To protect the deck from water apply at least 2 coats of clear varnish

8. Glue the deck and hull together with 2 component glue
Use small modelling clamps to hold the parts whilst the glue is setting



INSTRUCTIONS

9. Sailing

Fill the motor with water using a pipette in one of the tube openings
The "Boiler" must be full so that hot water comes out without air bubbles.

Place a candle under the " Boiler" and set the boat in water.

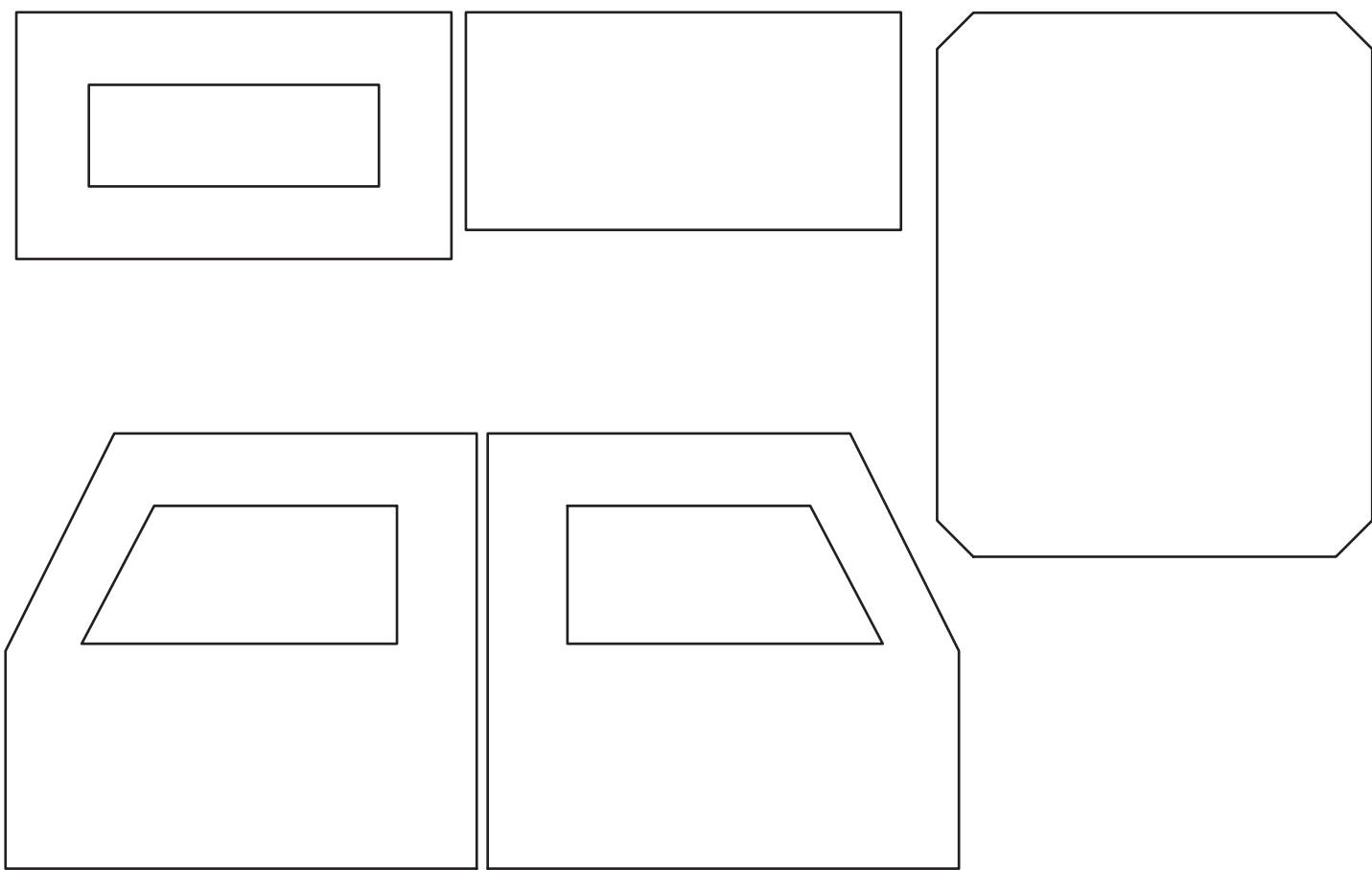
Note Never leave a candle to burn unattended!

The boat should sail making a characteristic pop -pop sound!

Have fun!



Cabin
Scale 1:1



Stand
Scale 1:1

