

OPITEC

Hobbyfix

206.761

Functioning model Pneumatic Tipper Lorry



Necessary Tools:

Scissors,
Craft knife,
Hole maker,
Steel ruler,
Gluer

Please Note

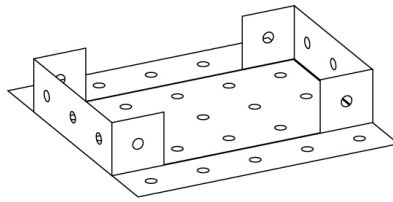
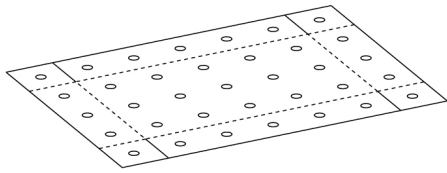
The OPITEC range of projects is not intended as play toys for young children. They are teaching aids for young people learning the skills of Craft, Design and Technology. These projects should only be undertaken and tested with the guidance of a fully qualified adult. The finished projects are not suitable to give to children under 3 years old. Some parts can be swallowed. Danger of suffocation!

		Size(mm)	Description	
Base	1	125x175 (5x7 hole)	Base plate	1
Strips	2	50x250 (2x10 hole)	Tipper	2
Strips	1	75x250 (3x10 Loch)	Holder	3
Wheels	4	Ø 40	Wheels	4
Dowels	2	Ø 5 x 100	Axles	5
Syringe	1	5ml,	Pneumatic	6
Syringe	1	10 ml,	Pneumatic	7
PVC-Tube	1	1,0 m	Pneumatic	8

INSTRUCTIONS

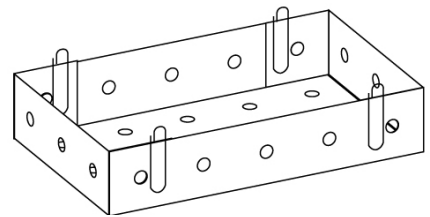
Step 1

Cut along the unboken lines as shown. Score the broken lines and fold.



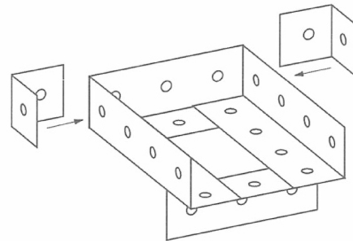
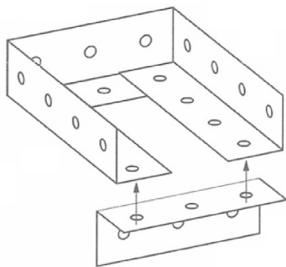
Step 2

Apply glue to the folded ends. Hold them in place with paper clips whilst drying. See diagram.



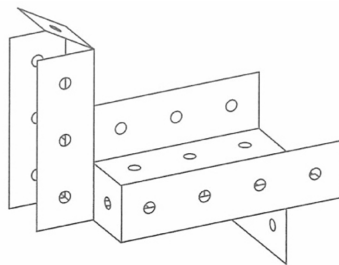
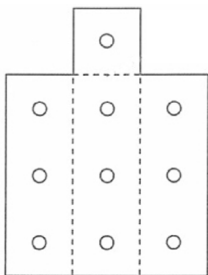
Schritt 3

Cut 2 holded pieces (2) 4 holes long and fold. From the rest of the holed strip (2) cut out pieces 3 holes long and fold. Glue as shown. From the remainder cut 2 x 1 hole pieces and glue them in the corners of the Tipper Lorry corners as shown.



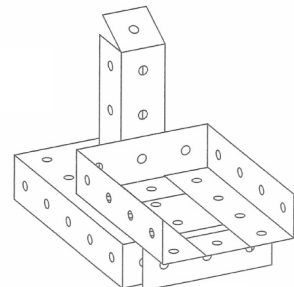
Step 4

Holed strip (3) cut it out to the shape as shown fold it together and glue in place



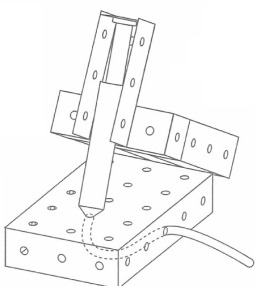
Step 5

Glue the Tipper part with the holder for the syringe on to the base.



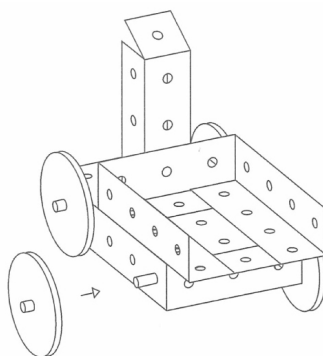
Step 6

Glue the 5ml syringe in the holder. The end of the syringe protrudes through a hole in the base as shown and then the connecting PVC tubing threads out through the side of the base. Hold it in place with sellotape.



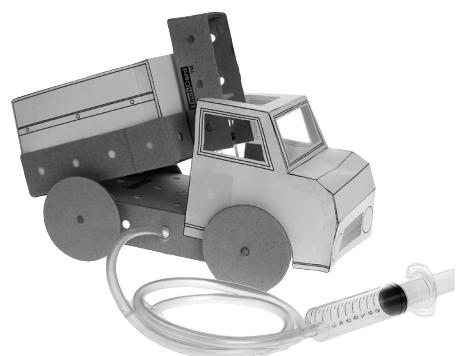
Step 7

Cut the dowel (5) axle to ca. 90 mm and guide them through the holes in the base as shown. Glue a wheel (4) on each end



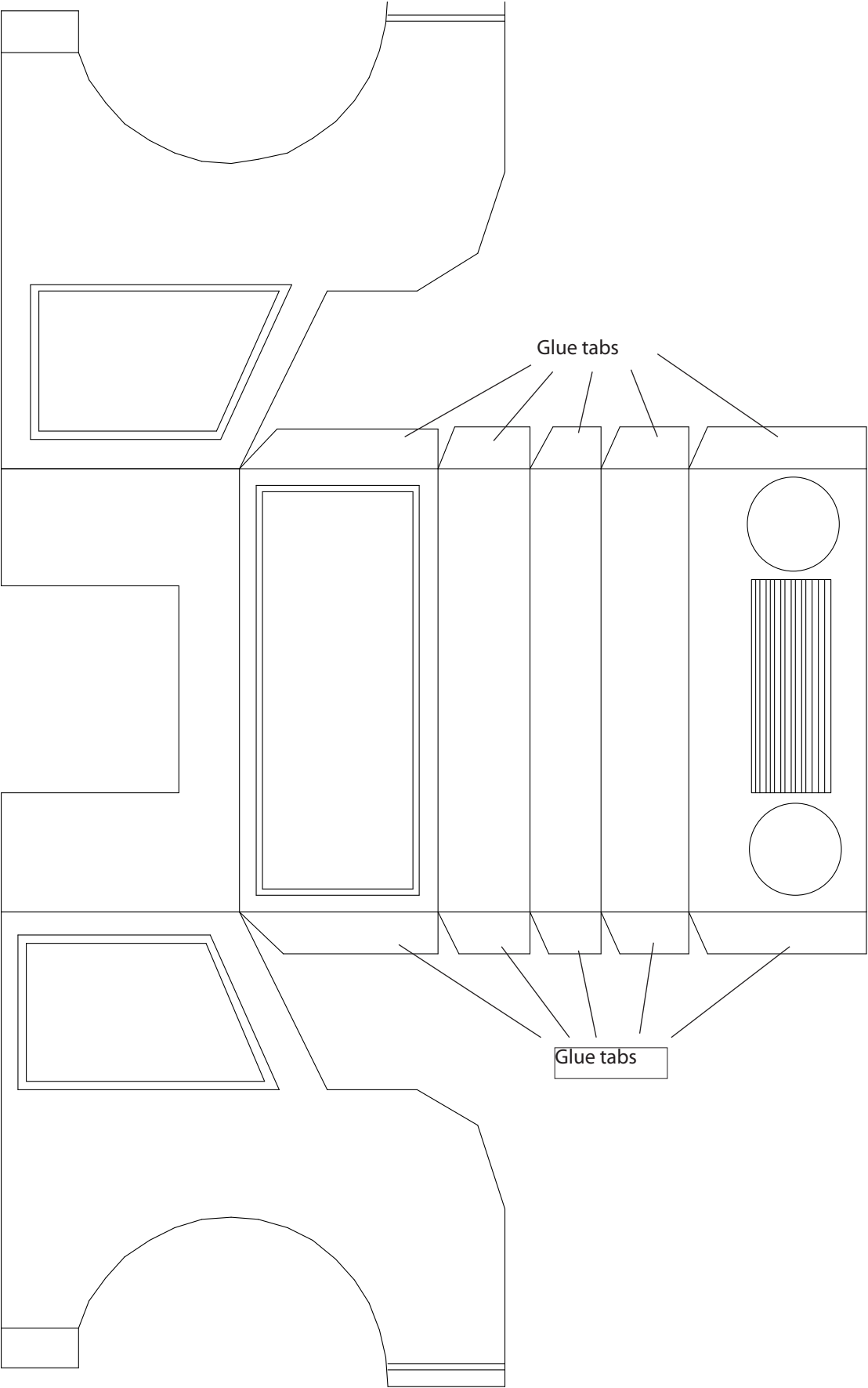
Step 8

Suck air in the large syringe and then connect the PVC tubing. By pressing the large syringe the smaller one will lift the Tipper back off the Lorry. Retracting the syringe pulls the Tipper back down again. Cut out the patterns 1+2 fold and glue in place (Not absolutely necessary).



INSTRUCTIONS

Pattern 1
Scale 1:1



INSTRUCTIONS

Pattern 2
Scale 1:1

