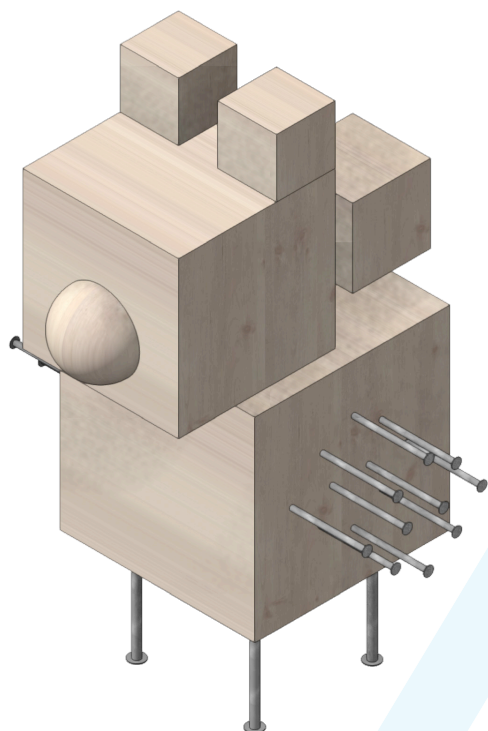
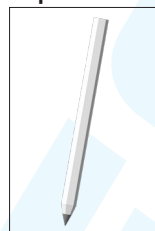


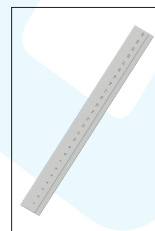
125.542 Easy-Line Spiky



Required tools:



Pencil



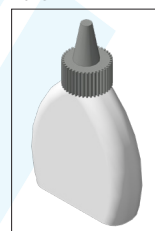
Ruler



Brush & colour



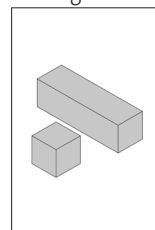
hammer



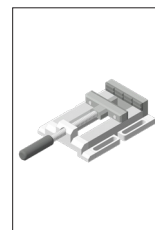
Wood glue



Scissors



Wooden cubes or strips

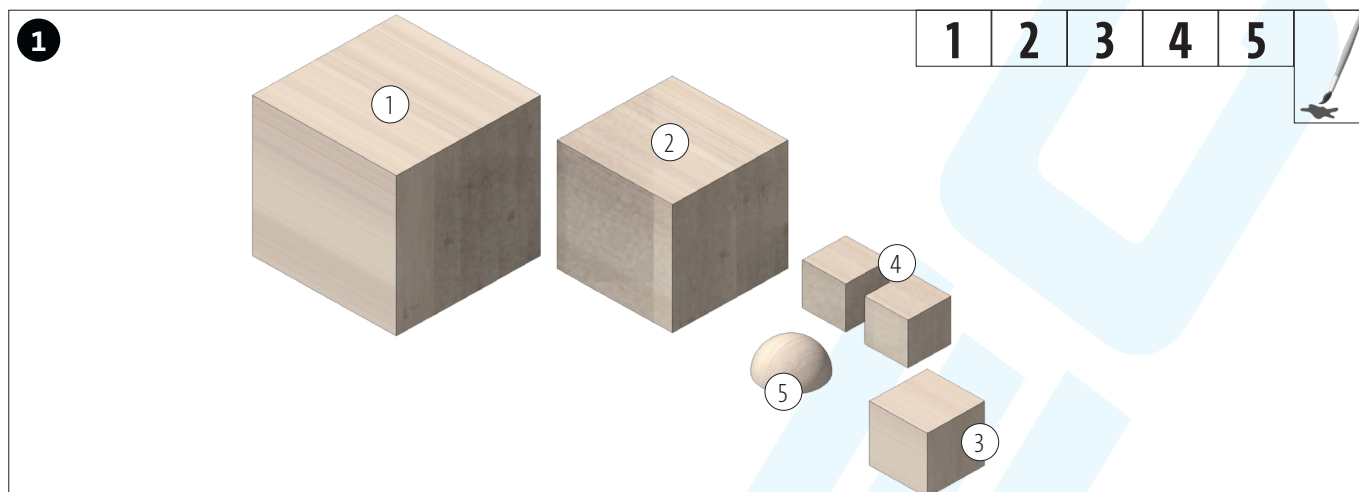


Machine vice

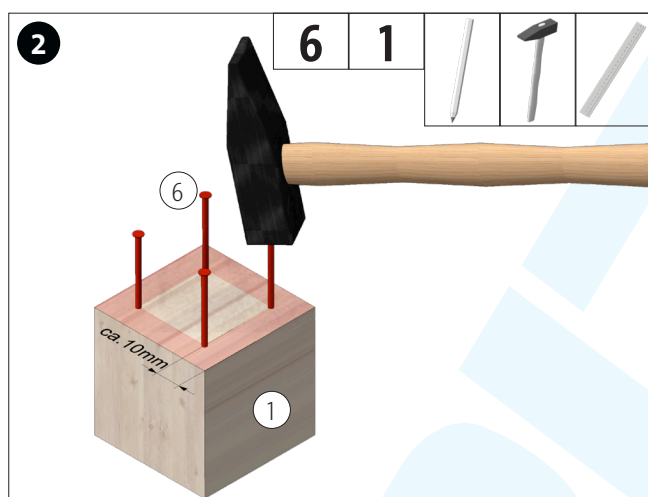
NOTE:

After completion, the OPITEC work kits are not articles with toy character of a generally commercial kind, but teaching and learning aids to support educational work. This kit may only be built and operated by children and young people under the guidance and supervision of competent adults. Not suitable for children under 36 months. Danger of suffocation!

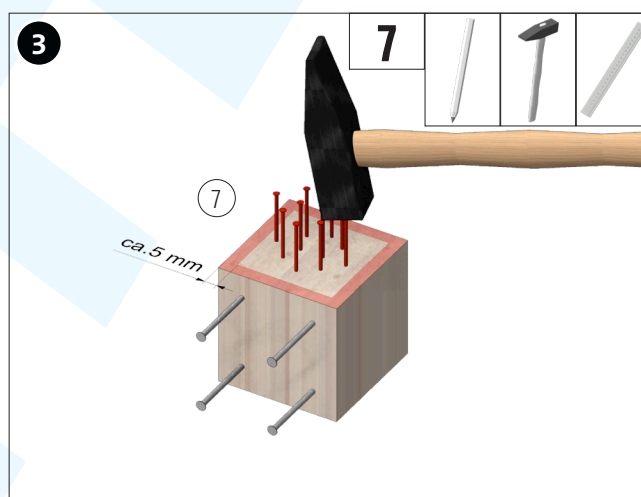
Parts list	Quantity	Dimensions (mm)	Description	Part no.
Wooden cube	1	50x50x50	Body	1
Wooden cube	1	40x40x40	Head	2
Wooden cube	1	20x20x20	Tail	3
Wooden cube	2	15x15x15	Ears	4
Wood hemisphere	1	o20x10	Nose	5
Wire pins	8	o2x40	Feet	6
Wire pins	30	o1,4x25	Fur	7



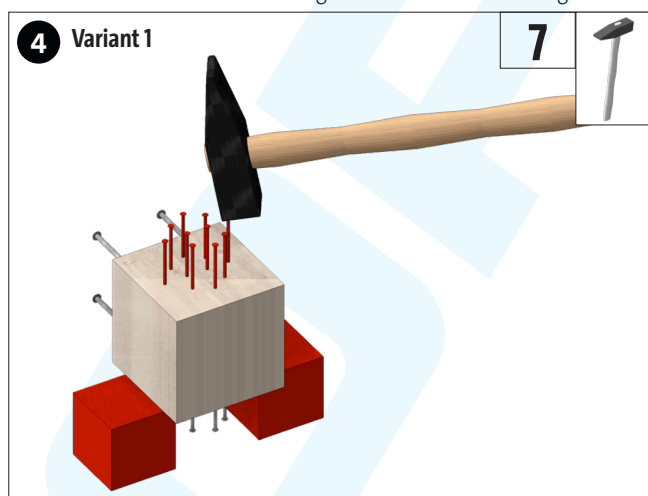
Paint the wooden cubes and the wooden hemisphere (1-5) with acrylic paint depending on the desired animal (dog, tiger, cat, sheep or even insects, arachnids (with 6 or 8 legs)). Then allow the paint to dry well



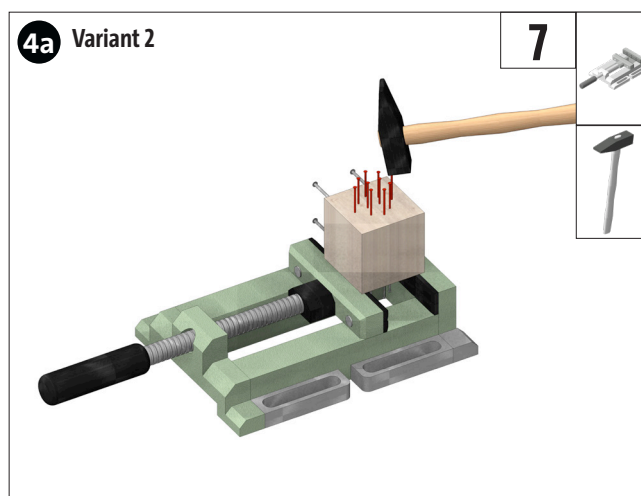
Hammer the required number of wire nails (6) for the feet approx. 5-10 mm deep into one side of the cube (1). Note: The thickness of the nails allows them to be hammered in against the direction of the grain!



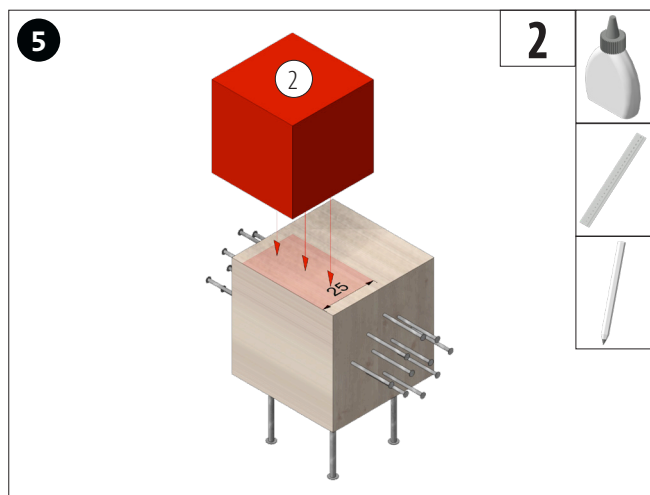
Turn the cube 90° and hammer in the desired number of wire pins (7), depending on the design, with the grain of the wood.



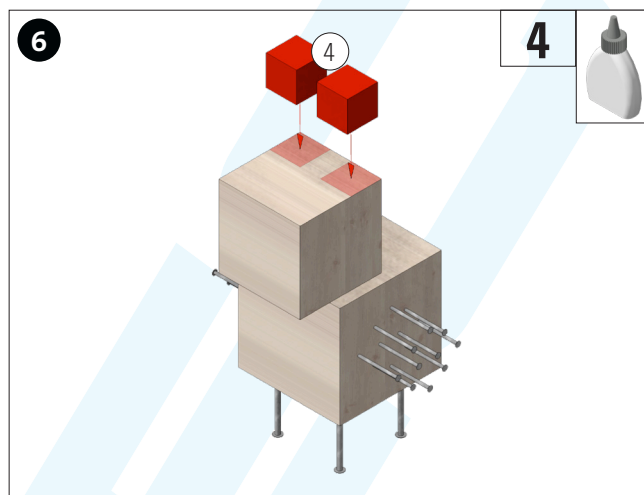
To hammer in the nails on the opposite side, place the body on two wooden cubes (approx. 30x30x30mm) or two 30x30mm square strips as shown, so that the existing nails „hang freely“ between them!



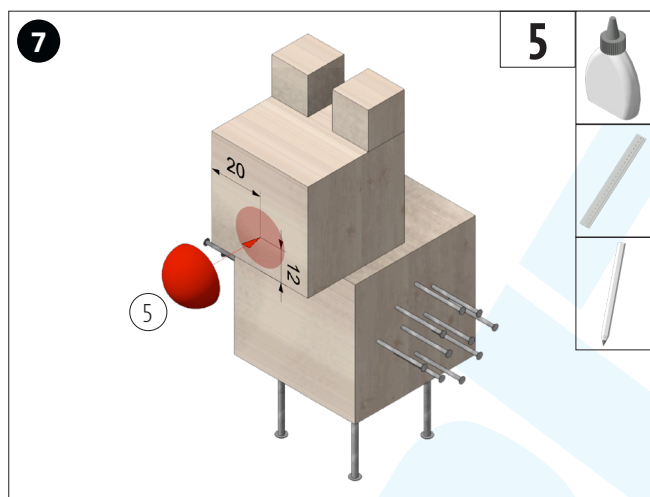
As an alternative to the procedure described in variant 1, a machine vice can be used in the workshop to support the body, as shown.



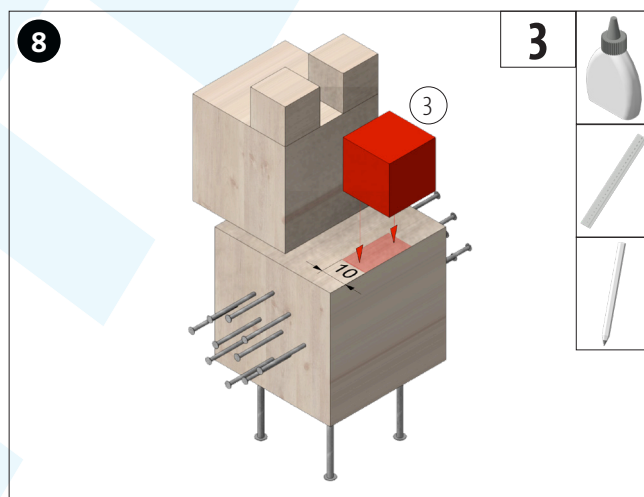
Measure the position for the head on the body (1) and glue on the head (2), centred as shown.



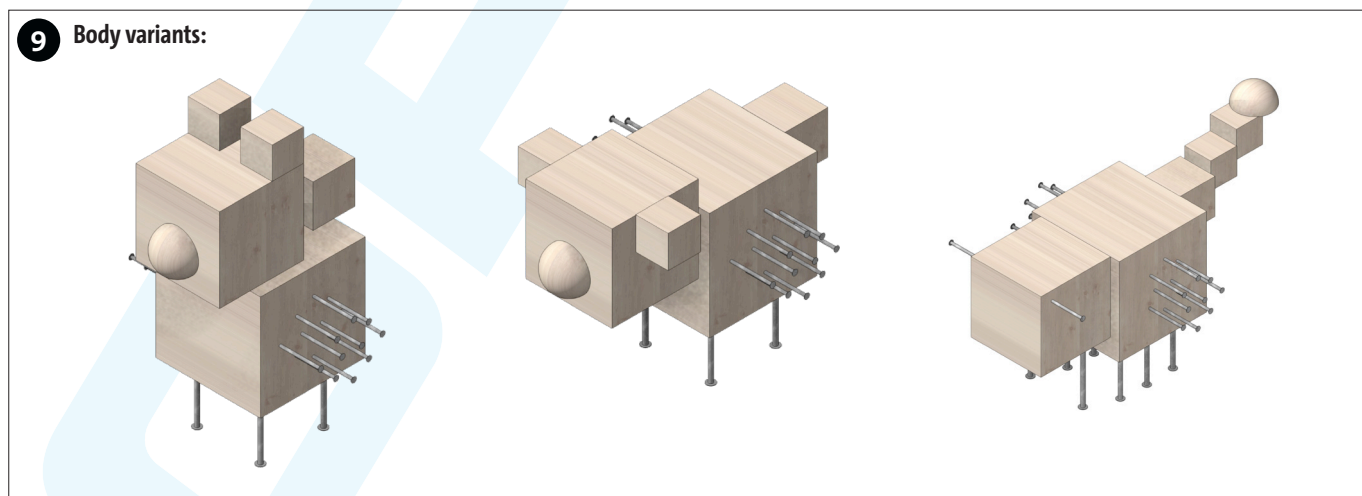
Glue the wooden cubes for the ears (4) flush with the outer edges on the head (2).



Measure and mark the position of the nose as shown. Then glue on the nose (5).



Measure and mark the position for the tail (3). Then glue on the centre and allow the glue to dry thoroughly.



Done!