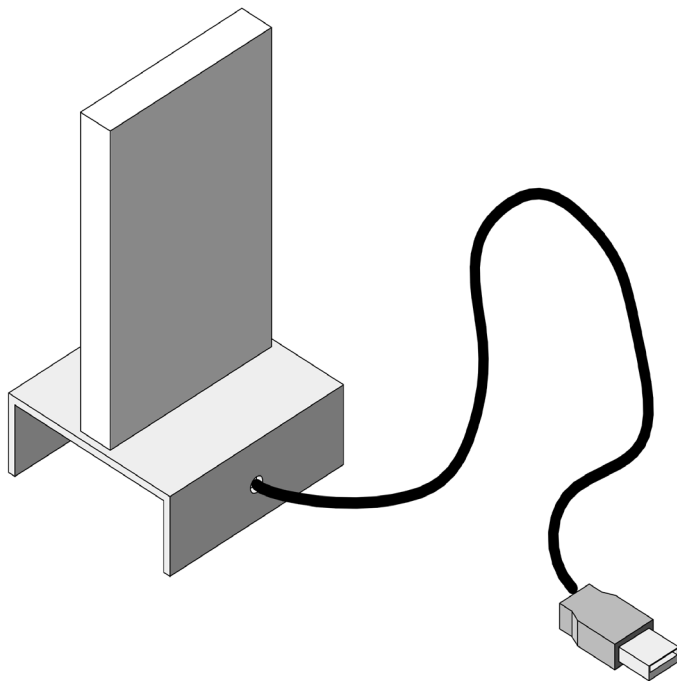
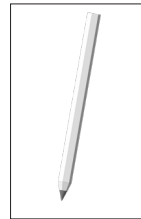


116.460

Rainbow Light with USB Connection



Tools required:



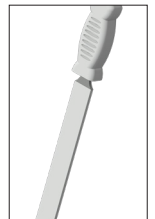
Pencil



Drill \varnothing 5 mm



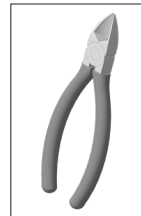
All-Purpose
Adhesive



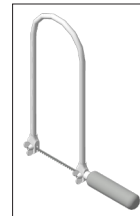
Workshop File



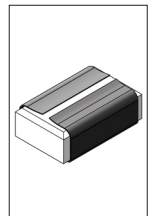
Side Cutter



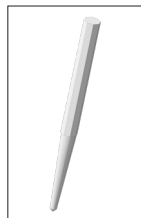
Seiten-
schneider



Fretsaw



Sandpaper



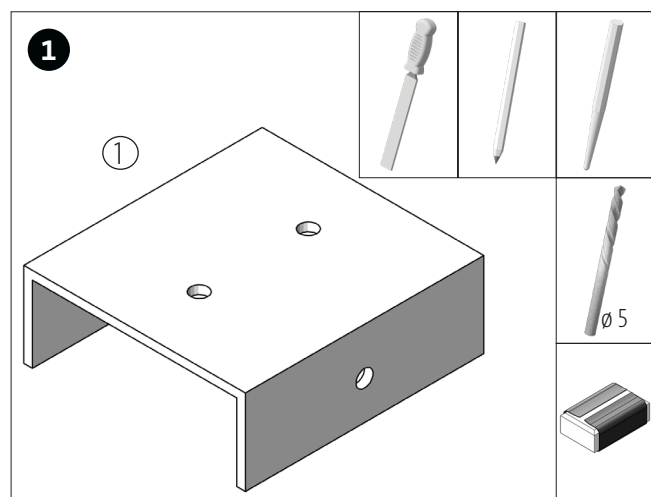
Centre Punch

Please note:

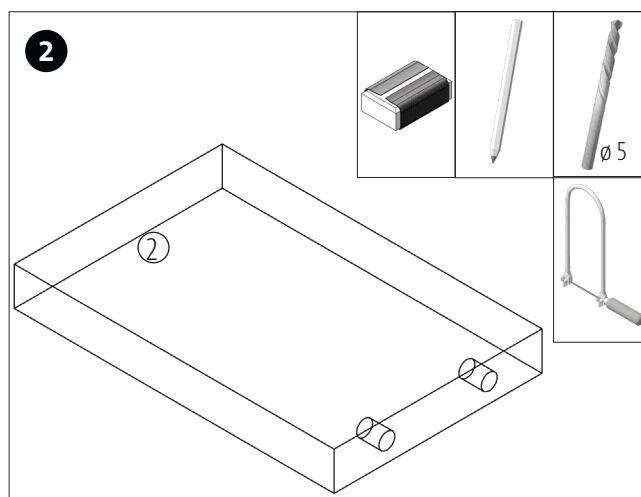
The OPITEC handicraft packs are not toys in a typical off-the-shelf sense, but rather additional teaching and learning material for educational purposes. This craft pack may only be constructed by children and adolescents under the guidance and supervision of experienced adults. Not suitable for children under 36 months. Choking hazard!

Stocklist	Quantity	Size (mm)	Description	Part-Nr.
Aluminium-U-Profile	1	70 x 65 x 25 x 2,5	Base Support	1
Acrylic Glass	1	100 x 65 x 12	Light Amplifier	2
RGB-LED	2	5	Lamp	3
Screw Terminal	1	2 pole	Wiring	4
USB Cable	1	ca. 750	Connection Cable	5

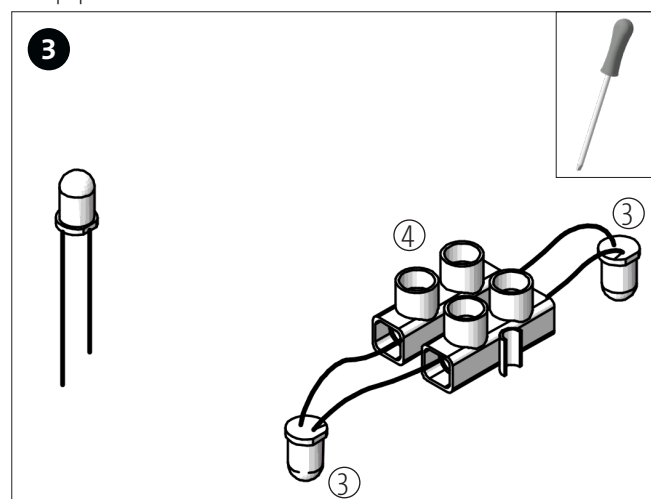
Instruction 116460
Rainbow Light with USB Connection



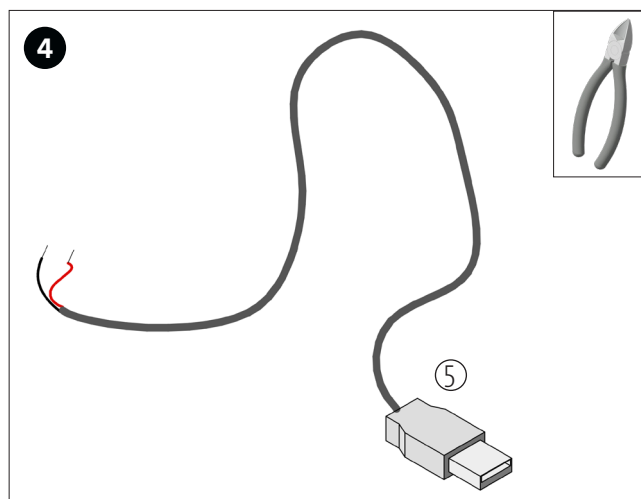
1. Deburr the aluminum U-profile (1) with a workshop file properly. Punch-mark and drill (Ø5mm) the holes according to the drawing (A). Please note: The surface can either be polished or roughened with sandpaper.



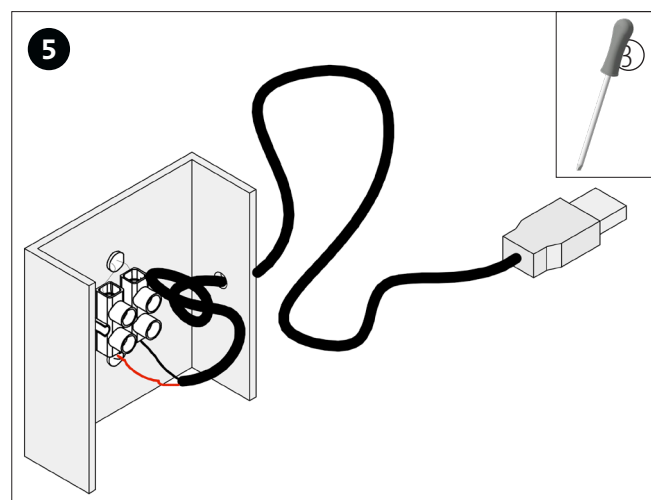
2. Mark the holes on the underside of the acrylic sheet (2) according to the drawing and drill approx. 6-8 mm deep. For better light effects all sides of the acrylic glass should be roughened with sandpaper.



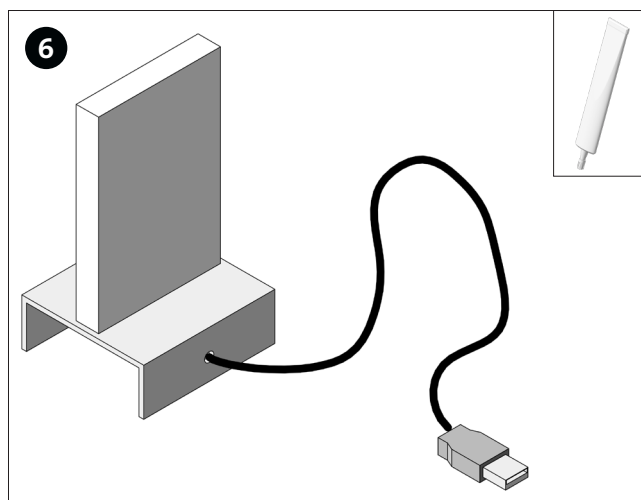
3. Install both LEDs (3) to the screw terminal (4) as depicted. The homopolar cathode (= short leg) have to oppose each other.



4. Strip the USB cable (5) approximately 25 mm at the end. Only the red and black live wires are required. The two different-coloured wires can be cut up to the insulation.

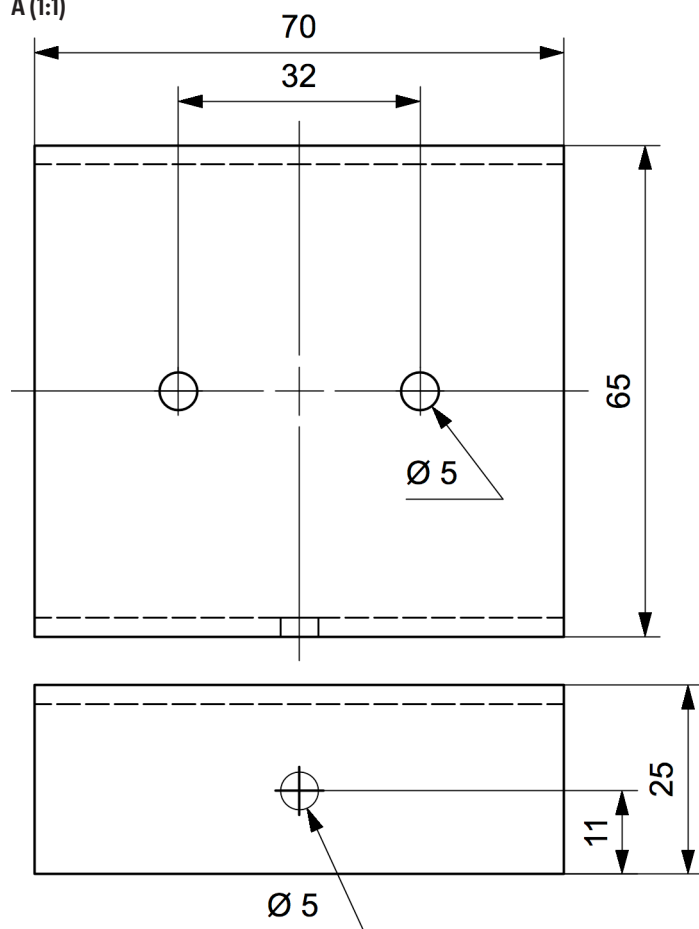


5. Thread the USB cable through the lateral hole and tie a knot for strain relief. Plug LEDs into the 5mm holes from bottom up. Connect the red wire to an anode and the black cable to a cathode of the screw terminal. Perform a function test!

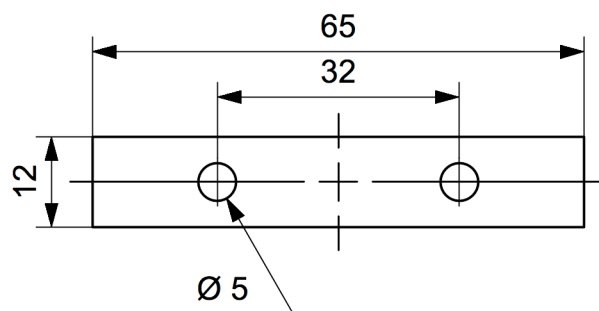


6. Check the gap between the drilled holes and the LEDs. If the circuit works properly and the holes are appropriate, the acrylic sheet can be glued onto the aluminum-U-profile using universal adhesive. Done!

A (1:1)



B (1:1)



C (1:1)

