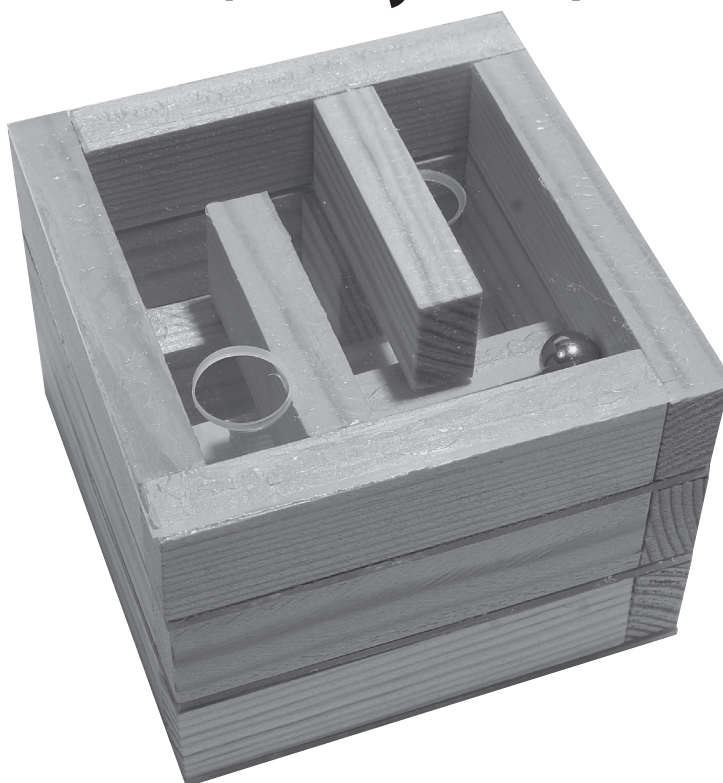


OPITEC

Hobbyfix

108.465

„Cube“ Labyrinth in 3 layers (acrylic)

**Warning!**

This product contains small parts that can be swallowed. There is a danger of choking.

Parts list				
	Quantity	Size(mm)	Description	Part No
Acrylglastreifen	2	2x90x190	layers	1
Pine strip	6	10x20x250	frame , labyrinth	2
Steel ball	1	ø10		3

Necessary tools

Pencil, ruler
Wood glue
Fine saw, mitre block
Pillar drill 15mm diameter.
Sand paper / wet dry paper

Please Note

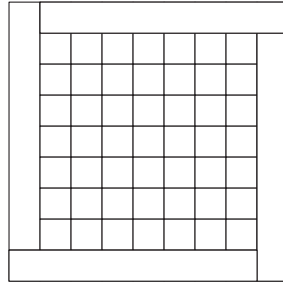
The OPITEC range of projects is not intended as play toys for young children. They are teaching aids for young people learning the skills of Craft, Design and Technology. These projects should only be undertaken and tested with the guidance of a fully qualified adult. The finished projects are not suitable to give to children under 3 years old. Some parts can be swallowed. Danger of suffocation!

Instructions

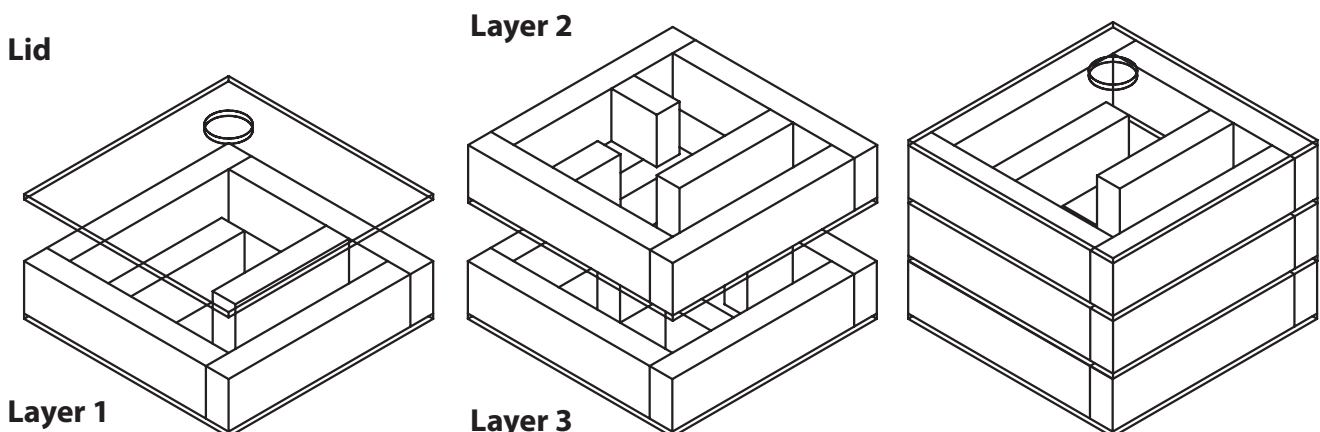
1. General: Using the materials given the cube can be made to the instructions or your own design (The full size patterns are on page 5)

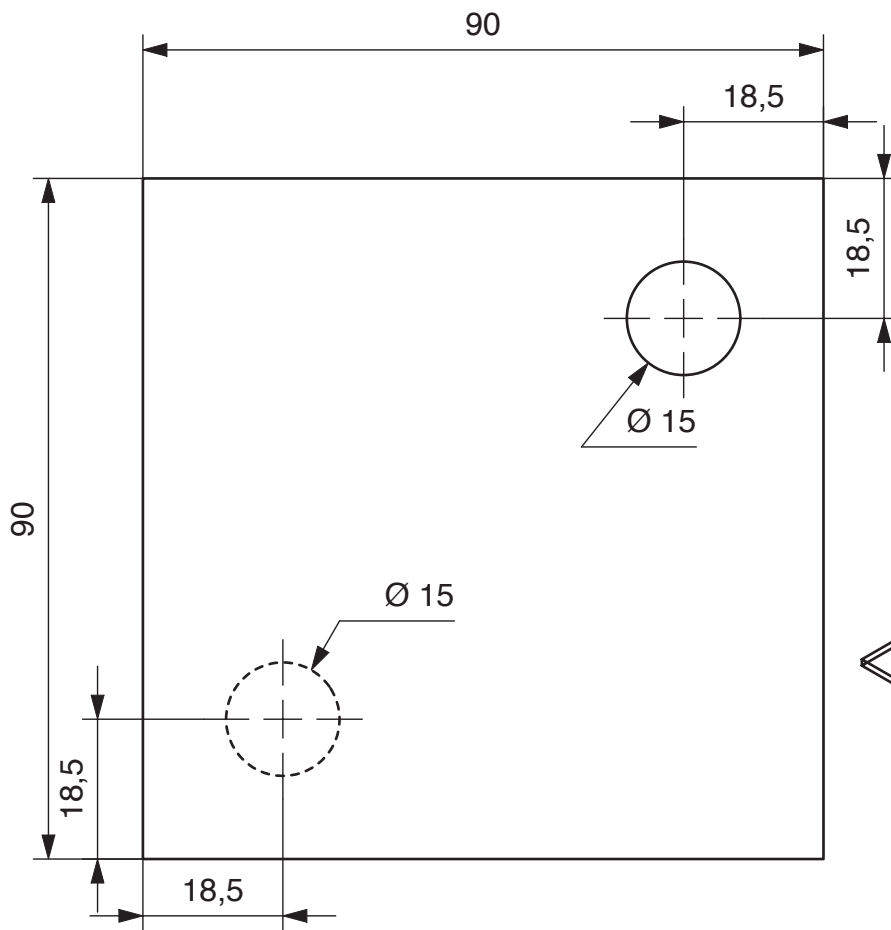
Note:

The holes are 10mm diameter. The pine strips for the labyrinth must have a gap of 11mm.

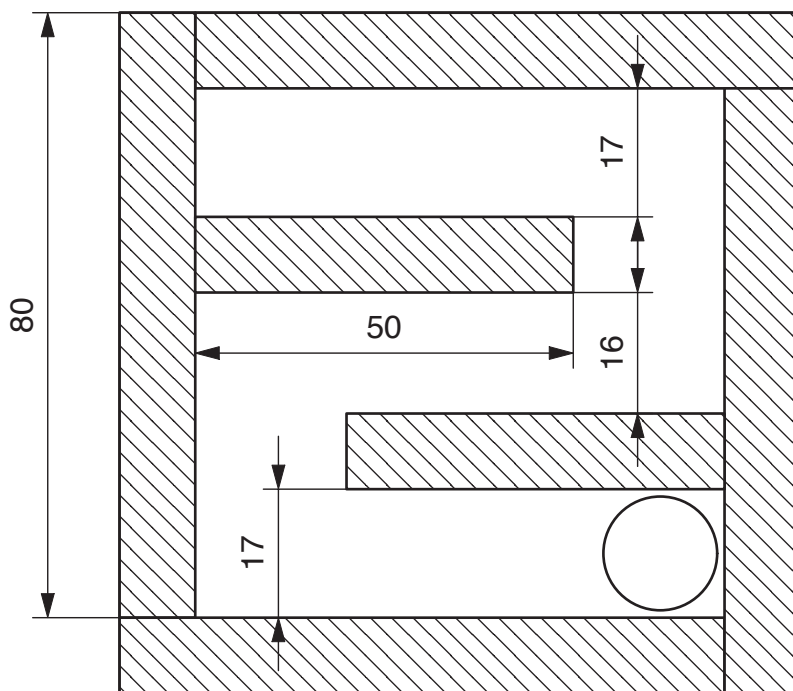
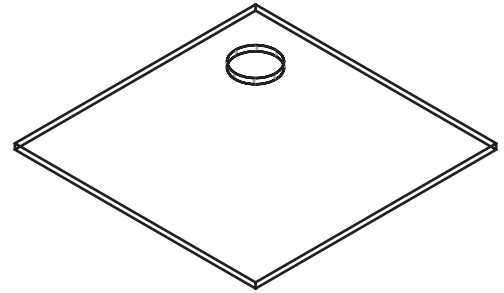


2. Check the design for your labyrinth carefully before starting to cut any wood.
Make up a cutting list for the pine strips.
 3. Mark out and saw four squares 90 x 90 mm from the acrylic (See diagram 3)
 4. Mark out the position of the hole on the acrylic sheet. 1
 5. Drill the 15mm hole with a pillar drill (Drill in two steps first use a smaller drill)
(Please take care to adhere to the safety rules when drilling and use a scrap piece of wood as an underlay)
Note!
You can drill both top and bottom holes at once. The position of the second hole is marked on the plan with a broken line.
 6. Cut the pine strip according to your list (Take care with the quantity of material supplied)
 7. Sand the pine strips
 8. Glue the strips on the acrylic (See diagram 3+4) Use UHU all purpose or a similar glue
Note!
Take care with the position of the holes
 9. Once dry you can assemble and glue the layers together. The best way is layer 2 with layer 3 & then layer 1 with the lid. Leave to dry and then glue layer 1 to layer 2
Hinweis: Position der einzelnen Ebenen beachte, dass nicht 2 Bohrungen übereinander liegen!
 10. Den Cube außen versäubern und evtl. die Holzfläche mit Lack, Wachs usw. behandeln.
- Viel Spaß mit dem Labyrinth-Cube!

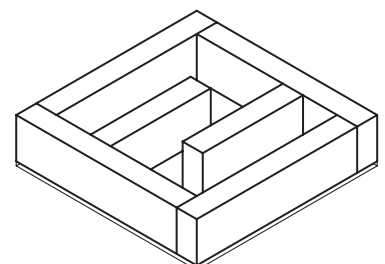
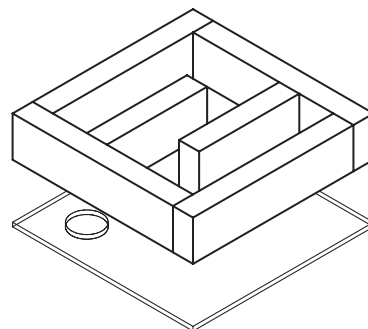


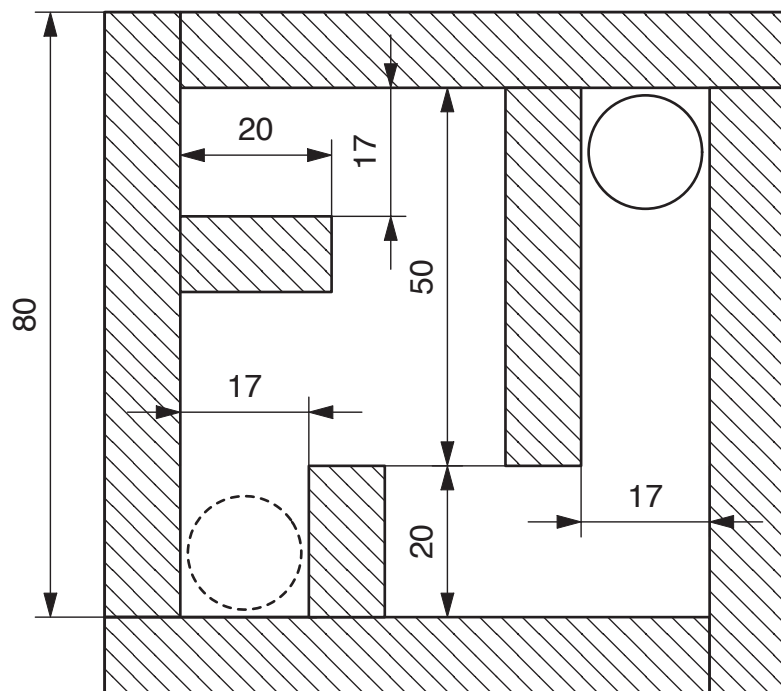


Lid and bottom for all the layers

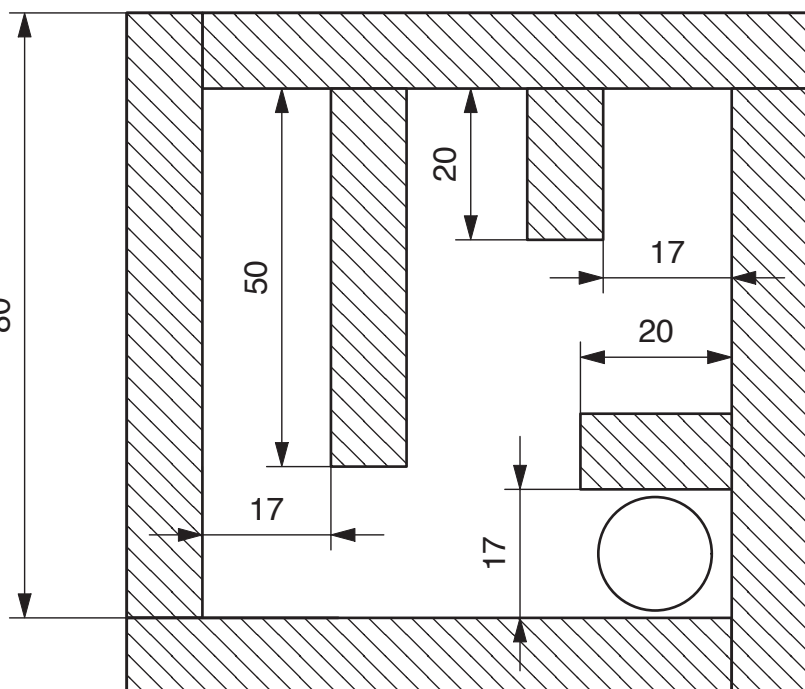
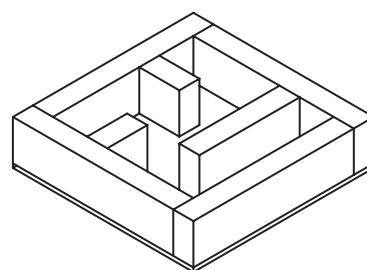
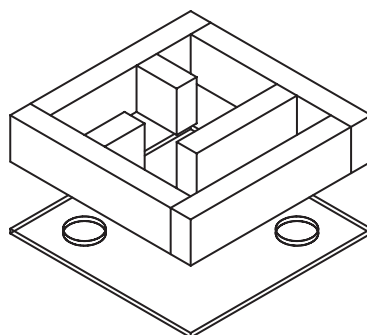


Layer 1

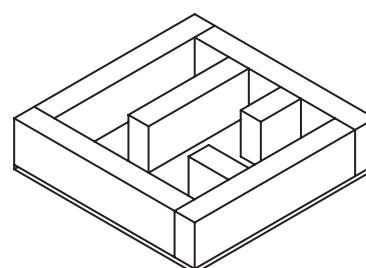
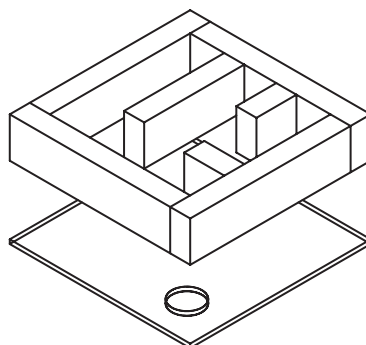




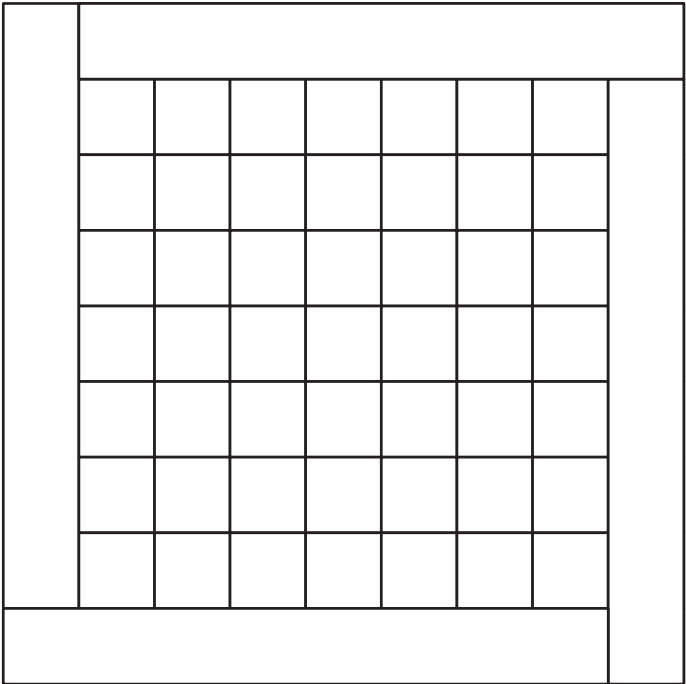
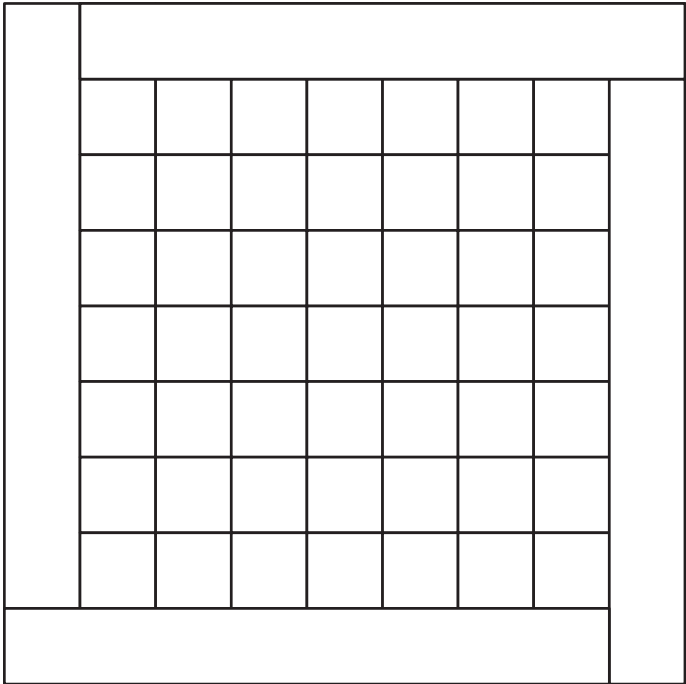
Layer 2



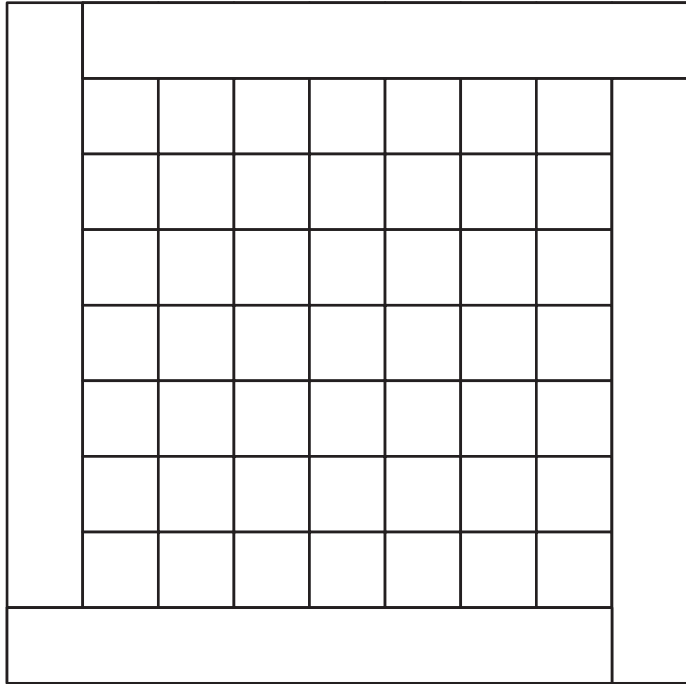
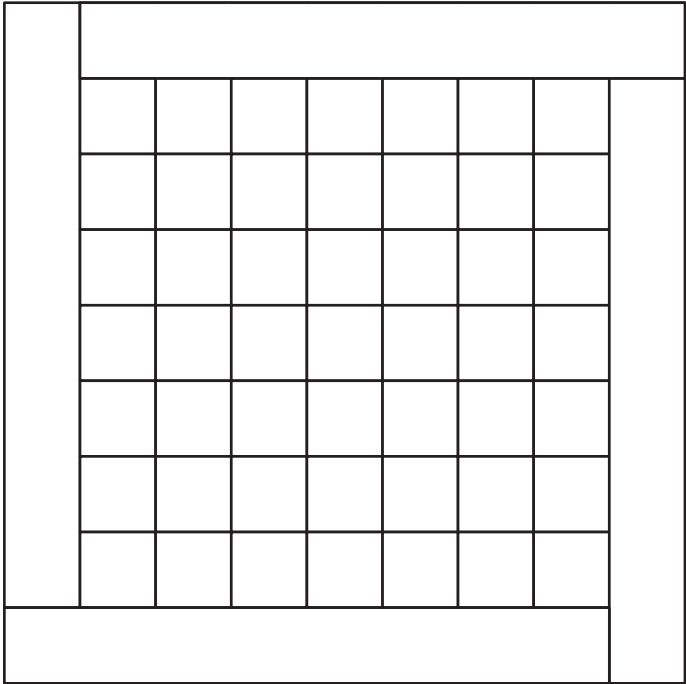
Layer 3



Anlage 1



Note: The patterns have 10x 10mm squares! Make sure that the labyrinth strips have a space of 11mm and that the holes in the layers are not larger than 10mm diameter.



Stückliste: