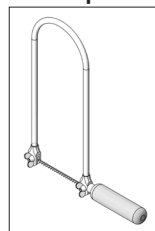


125.254

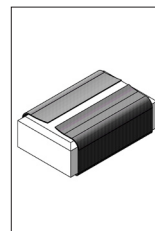
# Christmas Star Apollo



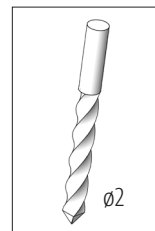
## Tools required:



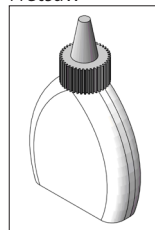
Fretsaw



Sandpaper



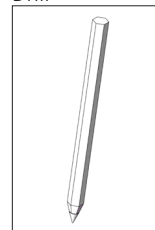
Drill



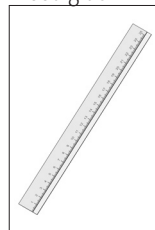
Wood glue



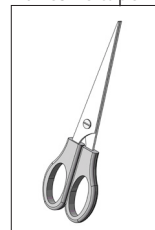
Adhesive tape



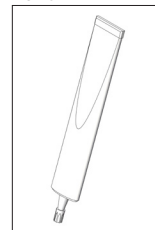
Pencil



Ruler



Scissors



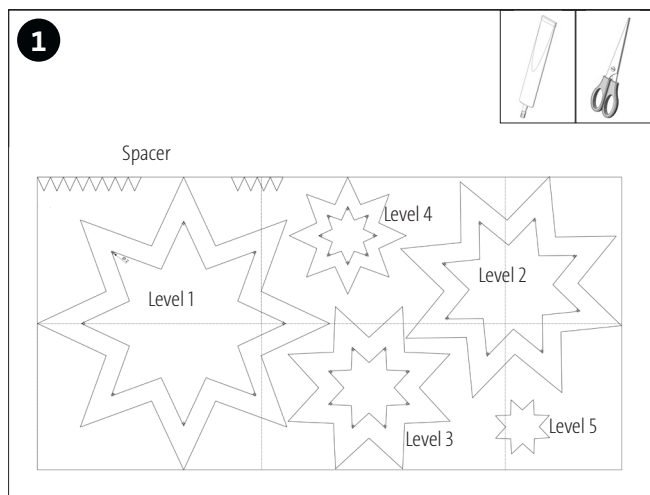
All purpose glue

## NOTE:

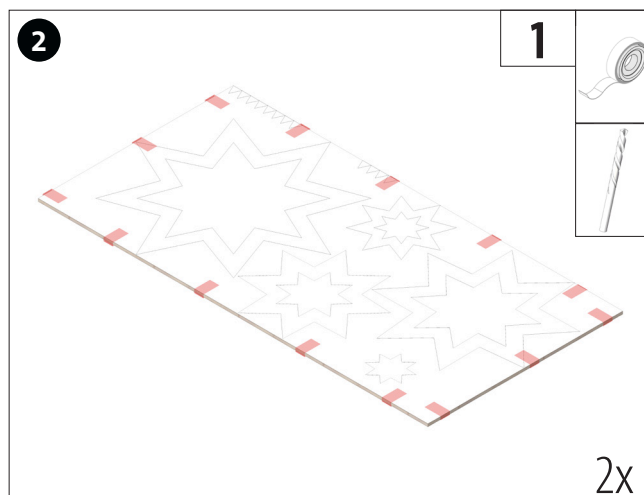
After completion, the OPITEC work kits are not articles with toy character of a generally commercial kind, but teaching and learning aids to support educational work. This kit may only be built and operated by children and young people under the guidance and supervision of competent adults. Not suitable for children under 36 months. Danger of suffocation!

Parts list	Quantity	Dimensions (mm)	Designation	Part no.
Lockwood	2	600x300x4	Base plate	1
Round bar	4	ø6x60	Spacer	2
Electric set for lamps	1		Electric set	3
LED lamp	1		Lighting	4

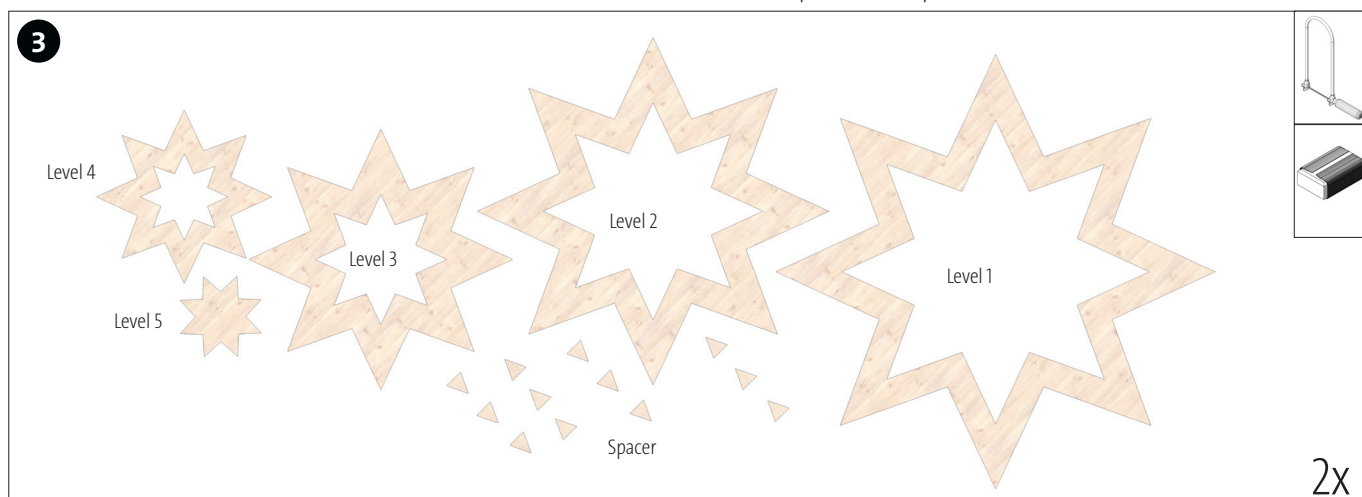
**Building instruction 125.254**  
**Christmas star Apollon**



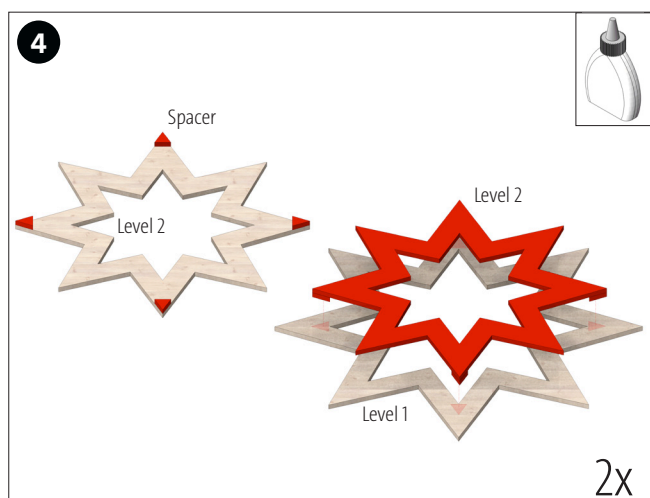
Cut out the template (A) and glue together at the gluing surfaces.



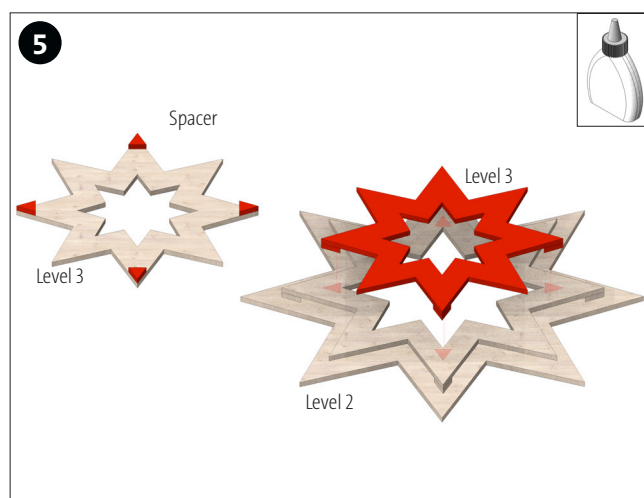
Glue or transfer the template to the plywood 1 as shown. Note: Drill the  $\varnothing 2\text{mm}$  holes for the fretsaw blade to pass through according to the template or as required.



Saw out all the individual parts and clean the saw cuts with sandpaper.

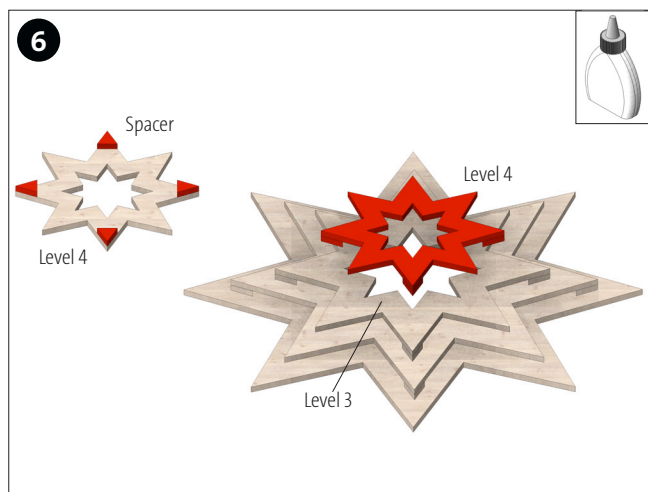


Glue four spacers flush to four corners of level 2 as shown. Then turn level 2 over and glue it centred on level 1. Let the glue dry well.

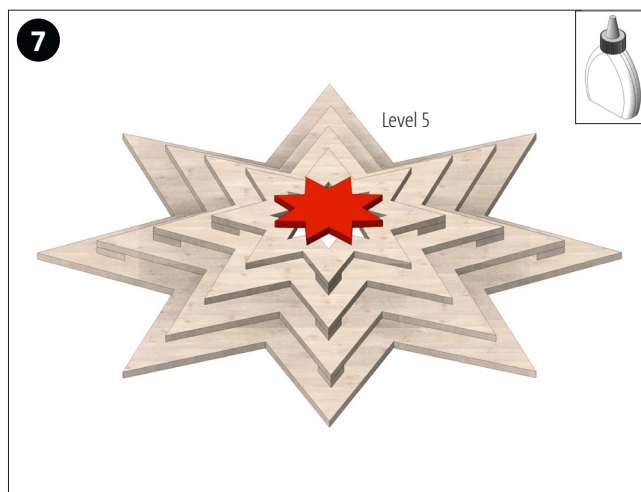


Glue four spacers flush to four corners of level 3 as shown. Then turn level 3 over and glue it centred on level 2. Let the glue dry well.

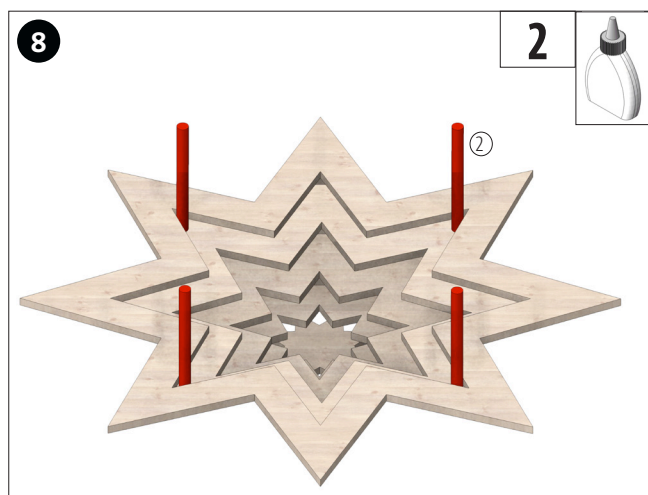
**Building instruction 125.254**  
**Christmas star Apollon**



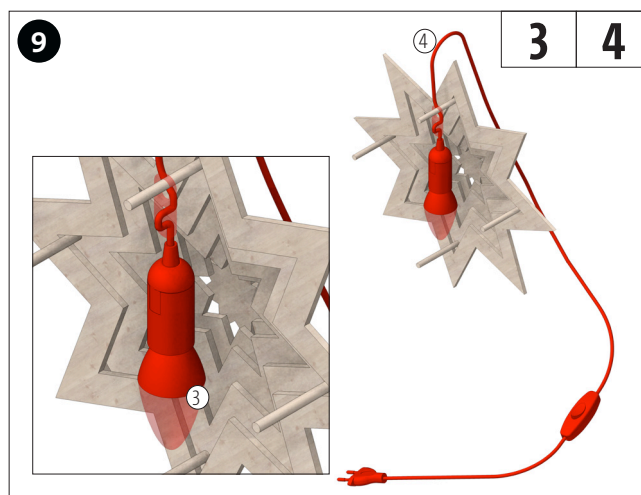
Glue four spacers flush to four corners of level 4 as shown. Then turn level 4 over and glue it centred on level 3. Let the glue dry well.



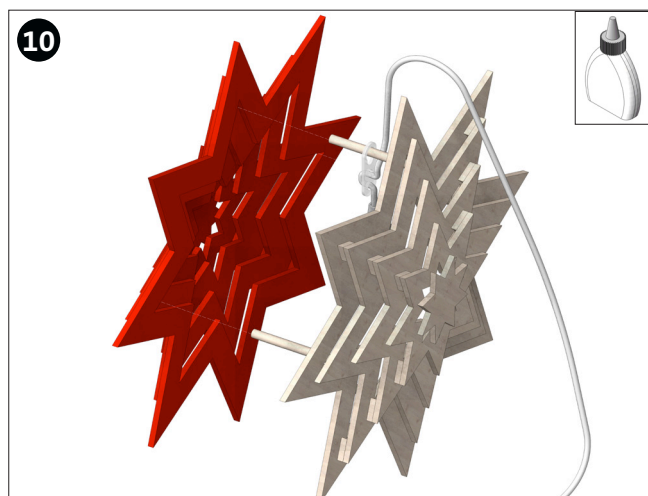
Glue the end star (level 5) onto level 4 as shown (turned 45°). Note: For the 2nd star, repeat steps 4-7 with the remaining parts.



Glue in the round bars (2) as shown. Note: Position the round rods in the corners without placeholders.



Screw the LED lamp (4) into the socket of the electrical set (3). Then hang the electrical set on one of the round rods as shown.



Glue the finished 2nd star onto the round rods so that it is congruent. Let the glue dry well.



Ready.