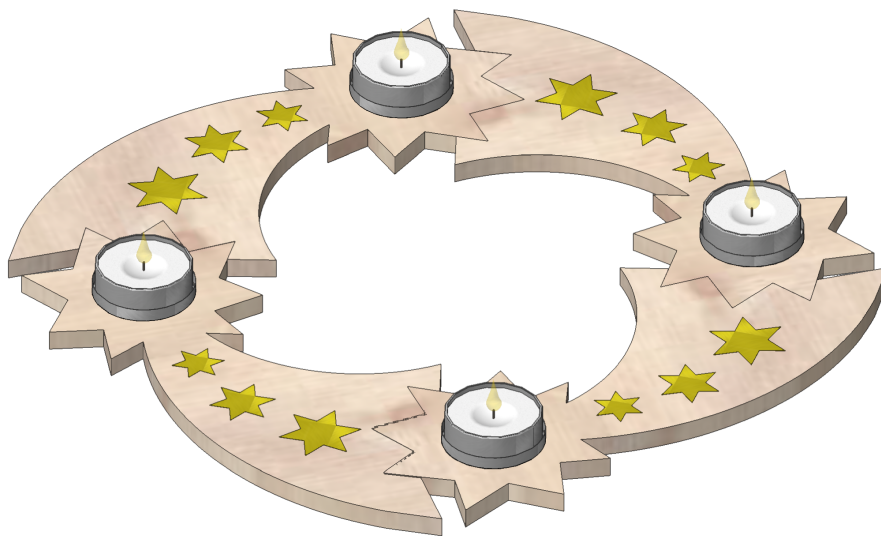
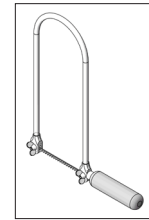


112.721

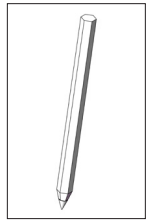
# Candel Holder Advents ring (4-parts)



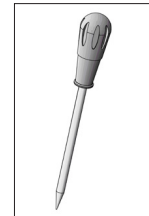
## Necessary tools:



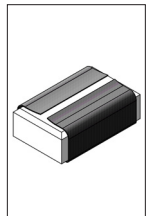
Fretsaw



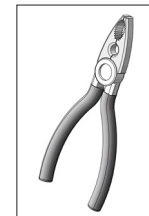
Pencil



Bradawl hole  
maker



Sandpaper and  
block



Pliers



Tea lights

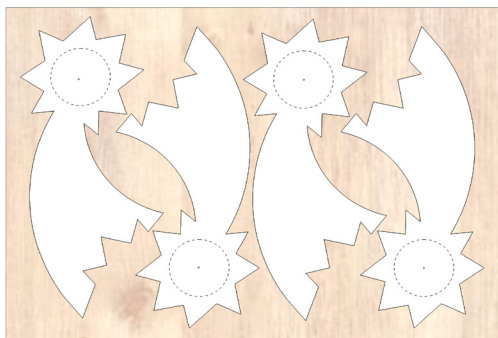
## Please Note

The OPITEC range of projects is not intended as play toys for young children. They are teaching aids for young people learning the skills of Craft, Design and Technology. These projects should only be undertaken and tested with the guidance of a fully qualified adult. The finished projects are not suitable to give to children under 3 years old. Some parts can be swallowed. Danger of suffocation!

Parts List	Quantity	Size (mm)	Designation	Part No.
Plywood	1	300x210x8	Star elements	1
Tea light holder	4	ø40	Tea light holders	2
Drawing pins	4		Fixing for tealight holder	3

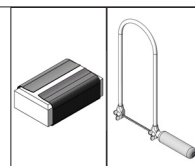
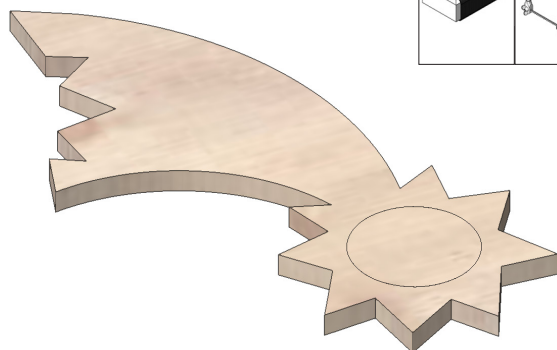
Instructions 112721  
Candle Holder - Advents ring (4-parts)

1



Trace the star elements ( Pattern page 3) on to the plywood sheet (1).  
Mark the middle for the tea light holder (2) with a holemaker

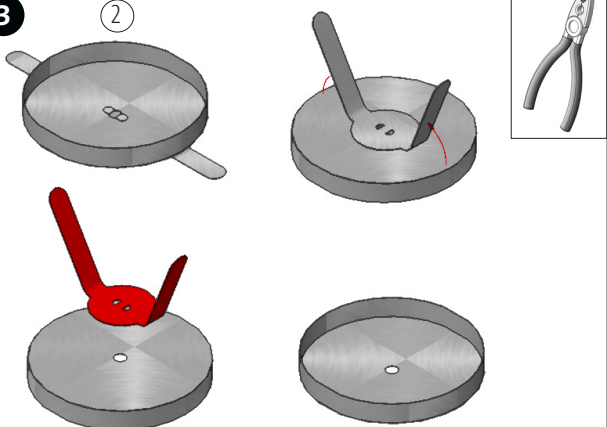
2



Use a Fretsaw to cut out the individual parts and then sand to finish.

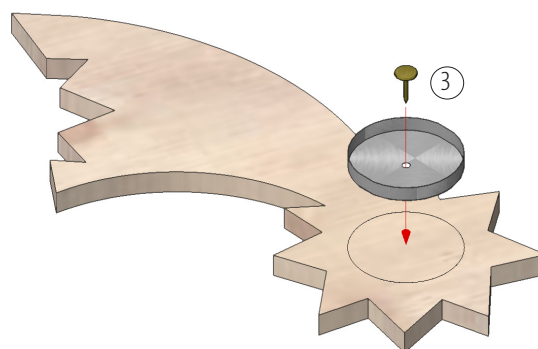
3

2



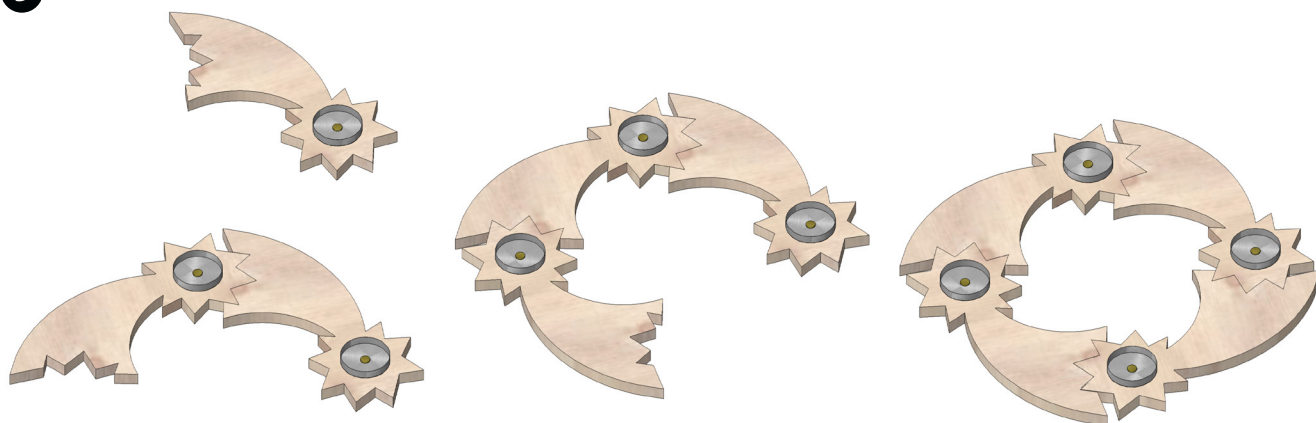
Remove the tabs from the back of the tea light holders (2) using pliers

4



The tea light holders (2) are fixed to each part using a drawing pin (3)

5



Decorate the individual parts and assemble them into a ring.

Instructions 112721  
Candle Holder -  
Advents ring  
(4-parts)

Patterns  
for the star elements  
Scale 1:1

