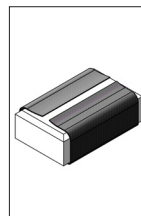


118.473

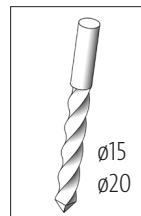
Incense Smoker - Little Wooden House



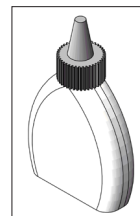
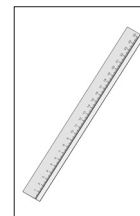
Tools Required:



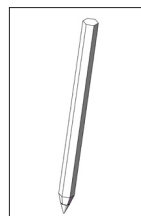
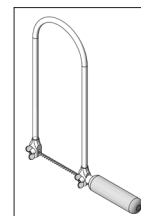
Sandpaper



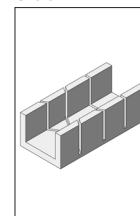
Drill Bit

Wood Glue +
All Purpose
Glue

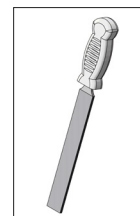
Ruler

Pencil and
Crayons

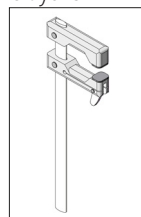
Fret Saw



Mitre Box



Engineer's File

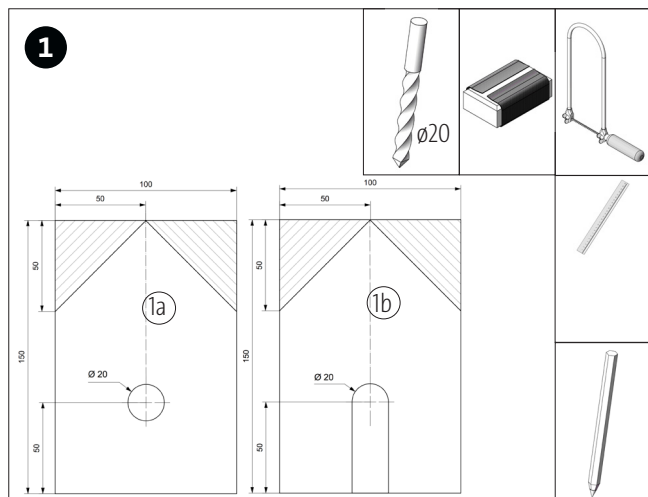


Locking Clamp

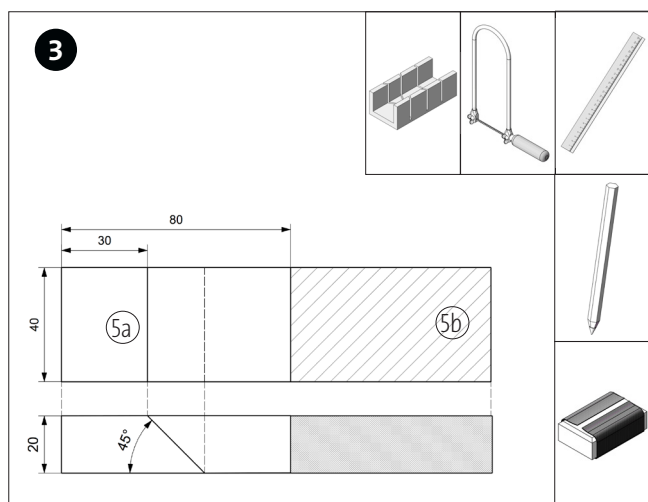
Please Note!

Finished projects of OPITEC handicraft kits are not play toy articles in the same sense as general commercially available ones, but rather are intended as teaching and learning material supporting educational objectives. The content of this construction kit may only be built and used by children and adolescents under the guidance and supervision of qualified adults. Not suitable for children under 36 months. Risk of suffocation!

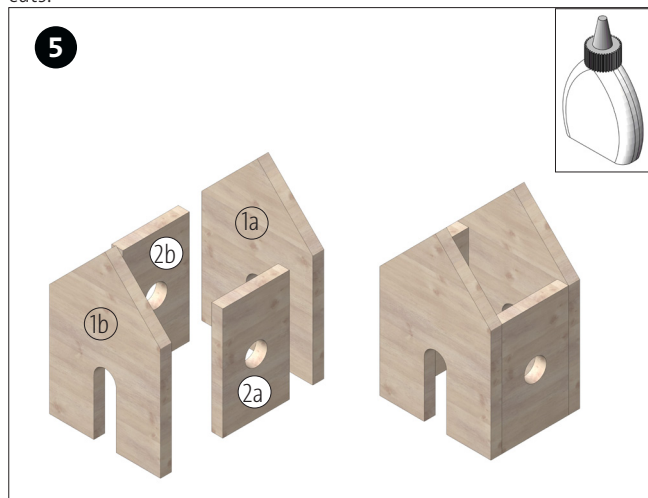
Part List	Quantity	Size (mm)	Designation	Part-No.
Wooden Board	3	150x100x10	Base Plate/ Front and Backside	1
Wooden Strip	1	300x60x10	Side Strips and Candleholder	2
Wooden Board	2	100x100x10	Roof	3
Wooden Strip	1	75x10x10	Gable	4
Wooden Strip	1	150x40x20	Chimney	5
Tealight Holder	1		Holder for Incense Cone	6
Thumbtack	2		Fixing of Tealight Holder	7



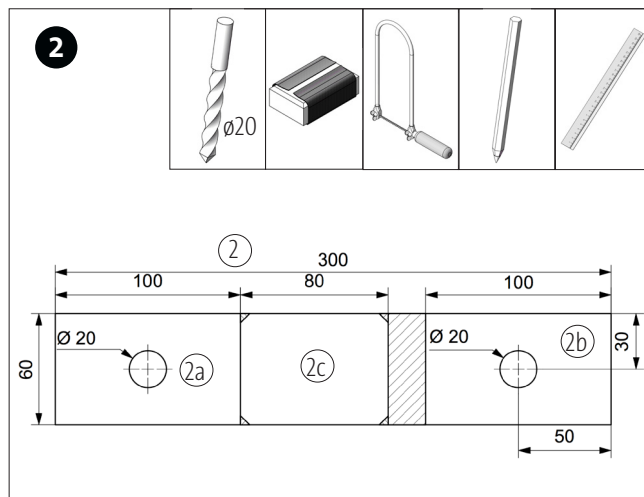
Transfer the template (page 5) for the walls of the house (1a + 1b) to two wooden boards (1). Mark and drill the holes with the $\varnothing 20$ mm drill bit. Then saw out the door and the roof parts and clean the saw cuts.



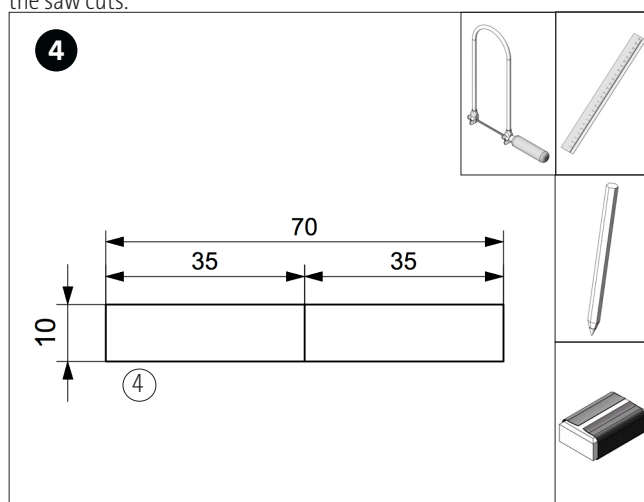
Cut the wooden strip (5) to size according to template (page 7). Then bevel one exterior edge to 45° according to drawing. Clean the saw cuts.



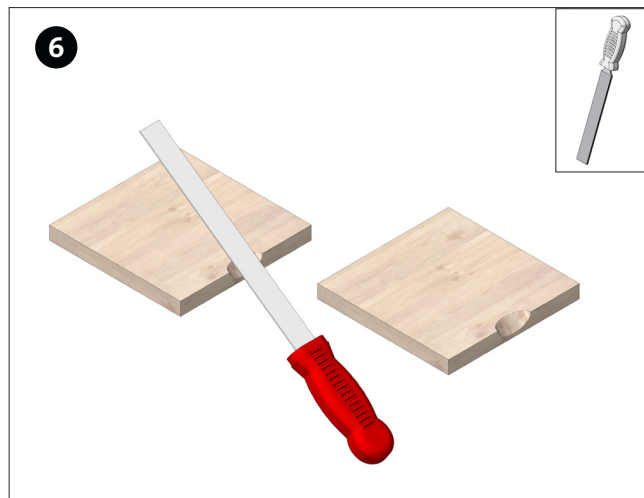
Glue together the walls of the house (1a, 1b, 2a, 2b) according to the drawing and allow to dry well. Fix with screw clamps.



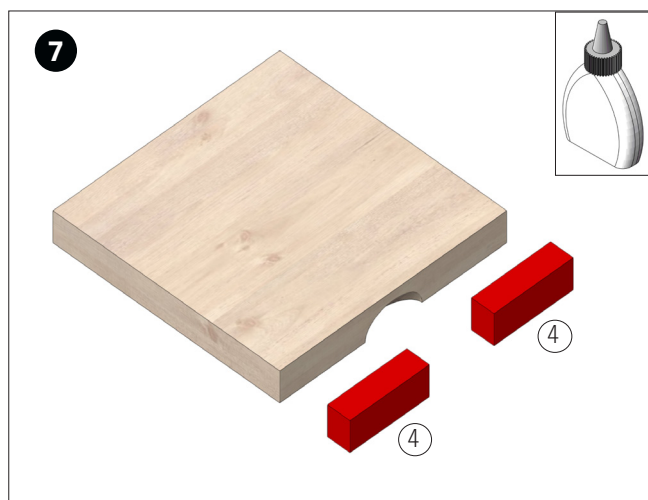
Mark the cut edges on the wooden strip (2) according to sizes (template page 4) and drill the two holes with the $\varnothing 20$ mm drill bit. Then saw out the side parts (2a + 2b) and the incense cone holder (2c) and clean the saw cuts.



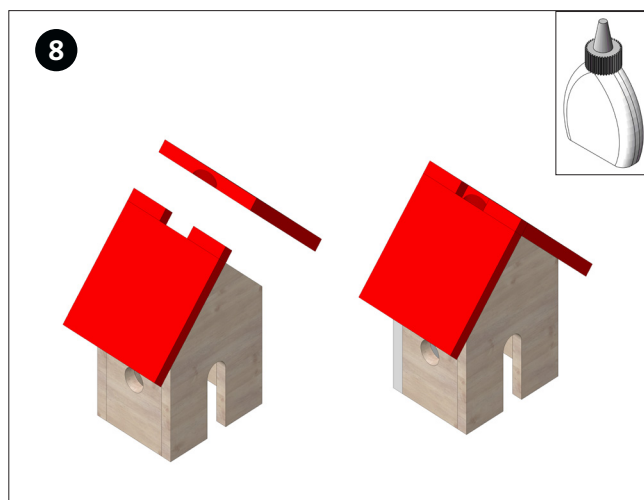
Part the wooden strip (4) as shown into 2 equal parts (template page 7) and clean the saw cut.



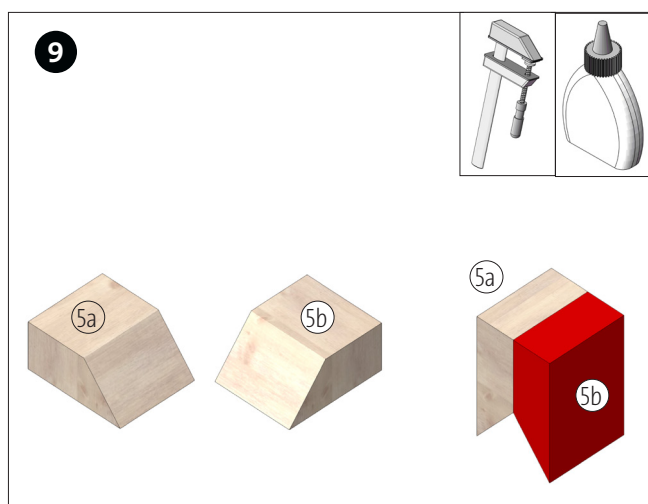
Next take the engineer's file and file a notch at the center of one edge of both of the two roof parts as shown in the drawing (approximately as deep as the file depth).



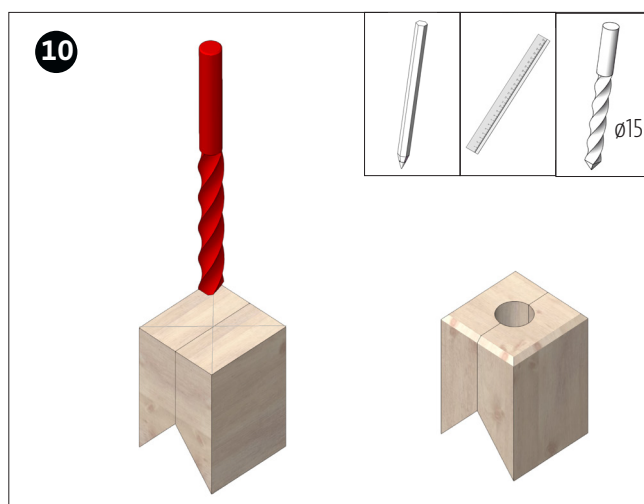
Glue the two strips (4) to one of the roof parts as shown. Allow the glue to dry well.



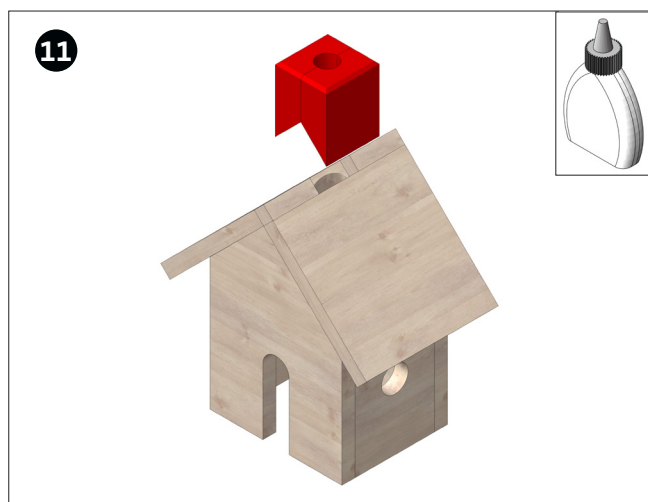
Glue the two roof parts symmetrically to the house walls with the two notches facing downwards (please refer to drawing!).



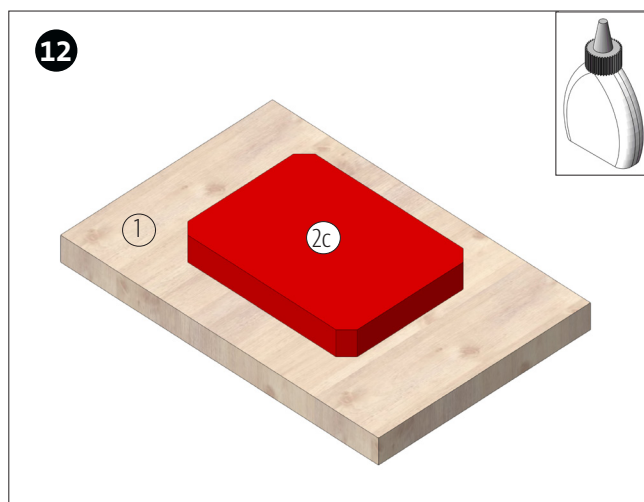
Glue parts 5a and 5b together as shown and fix with the lock clamp until the glue has dried completely.



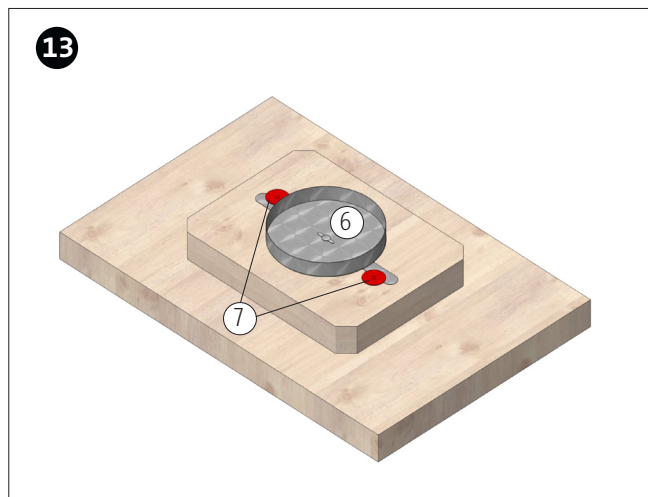
On the upper side of the chimney mark the center by drawing the diagonals and drill through using a $\varnothing 15$ mm drill bit.



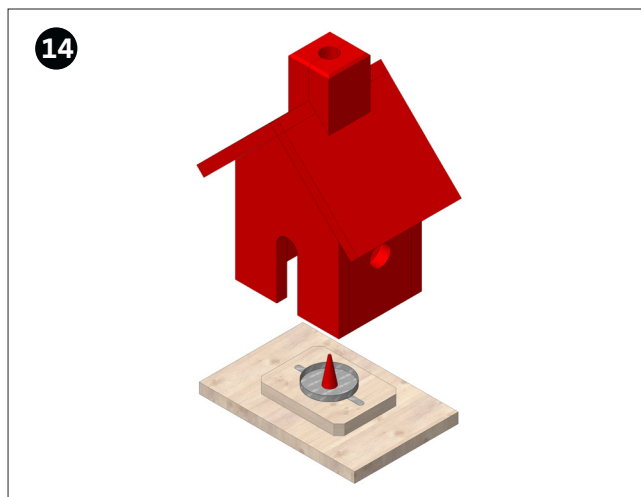
Glue the finished chimney to the roof using sufficient glue for the gluing to be tight, so later the smoke will not escape at the glued areas but only through the chimney! Allow glue to dry well!



On the last wooden board (1) mark the center and glue part 2c as shown. Allow the glue to dry well.

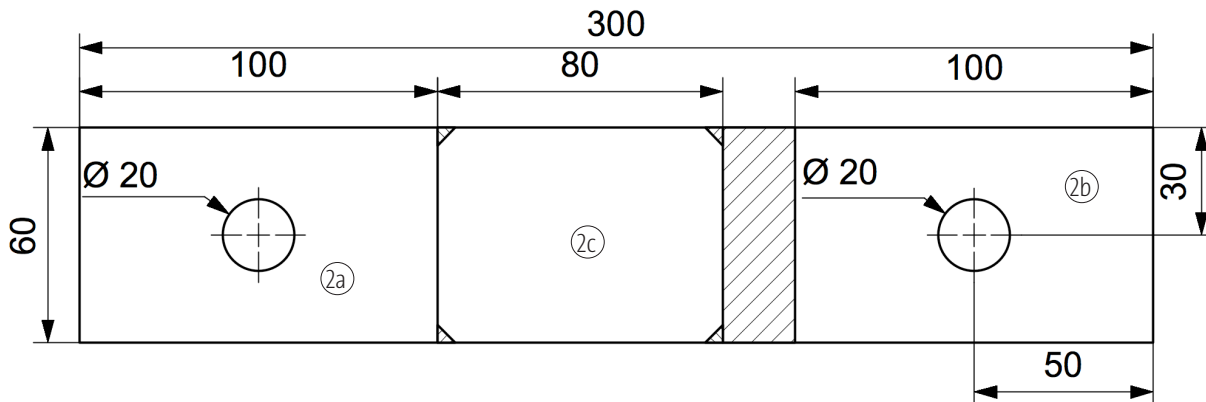


Attach the tealight holder (6) at the center of part 2c using the two thumbtacks (7).



Place an incense cone at the center of the tealight holder, light it and set up the little house. Finished!

Template Side Parts and Tealight Holder M 1:2



Building Instruction 118.473
Incense Smoker - Little Wooden House
Template Front and Backside
M 1:1

