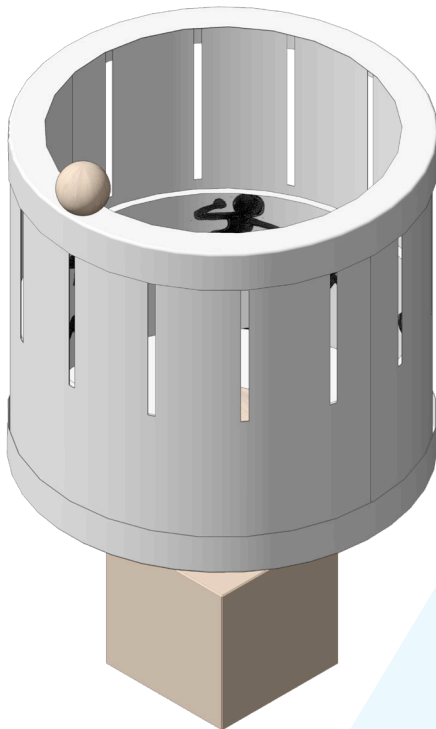
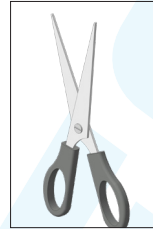


125.667

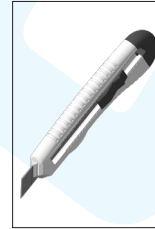
Rotating cinema



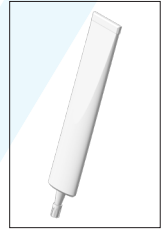
Benötigtes Werkzeug:



Scissors



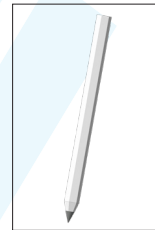
Cutter knife



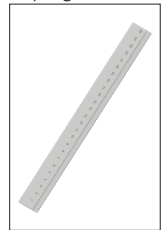
Superglue



Pricker



Pencil



Ruler

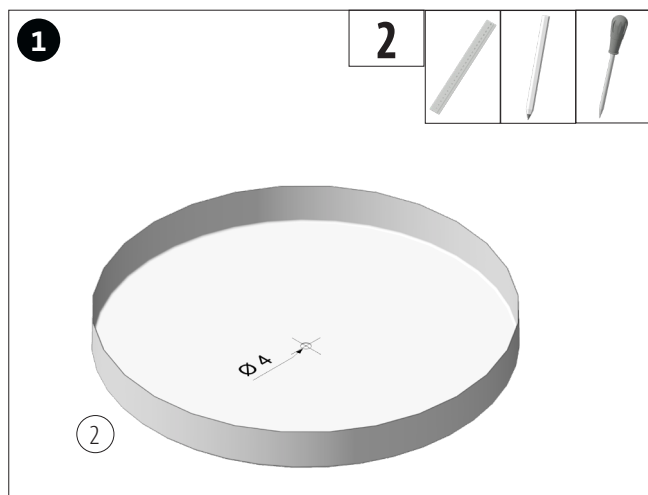


Wood glue

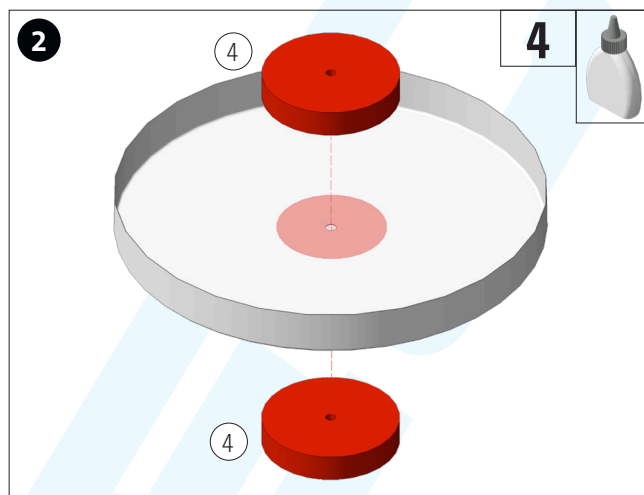
NOTE:

Once completed, the OPITEC work kits are not articles with the character of toys of a generally commercially available type, but teaching and learning aids to support educational work. This kit may only be built and operated by children and young people under the guidance and supervision of a competent adult. Not suitable for children under 36 months. Choking hazard!

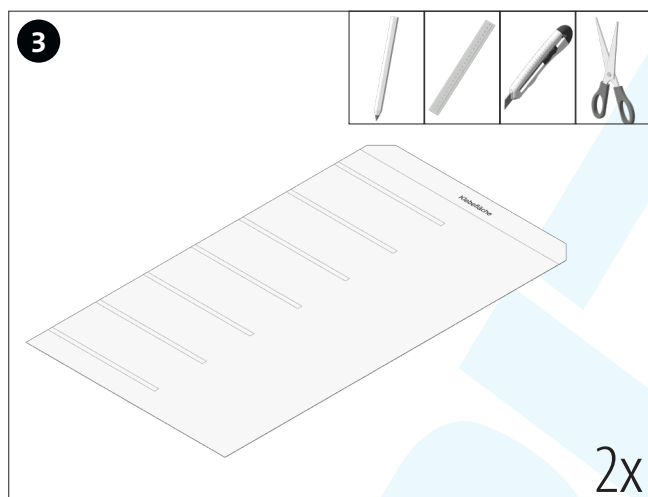
Parts list	Quantity	Dimensions (mm)	Description	Part no..
Lantern cover	1	Ø152 x 16 x Ø130	Cover	1
Lantern base	1	Ø152 x 16	Base	2
Clay cardboard	2	DIN A4	Slotted drum	3
Wooden wheel	3	Ø50 x 10		4
Wooden ball	1	Ø20	Handle	5
Spacer rollers	1	Ø7 x 30	Spacer sleeve	6
Reducer	1	Ø4 x Ø3		7
Metal axle	1	Ø3 x 70	Axle	8
Wooden cube	1	60 x 60 x 60	Stand	9



Mark the centre of the lantern base (2) and pierce a hole with a diameter of approx. 4 mm



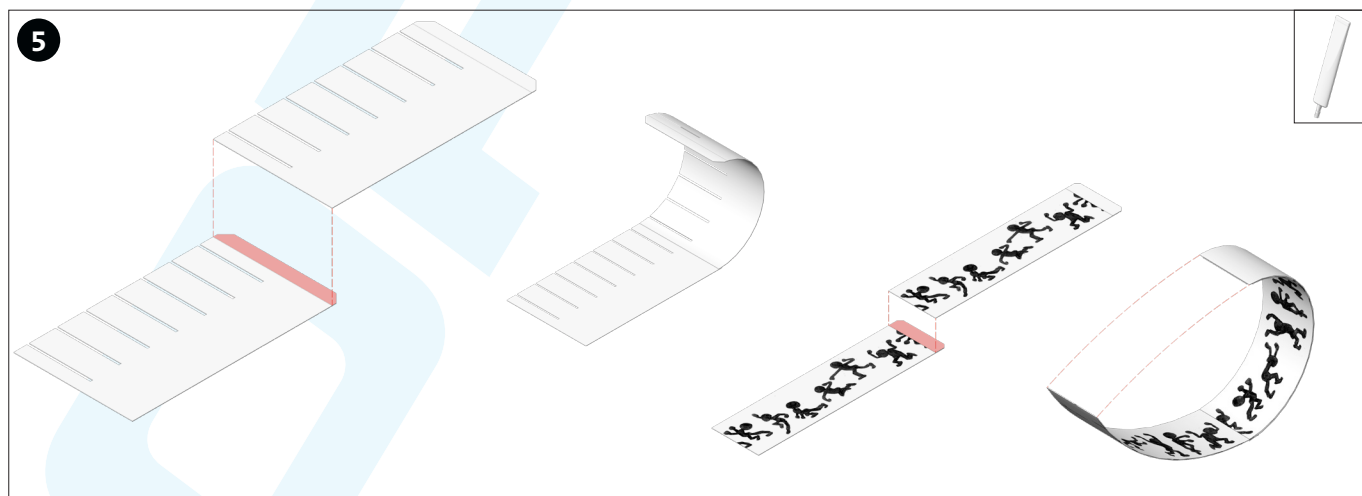
Glue a wooden wheel (4) to the centre of the lantern base from above and below.



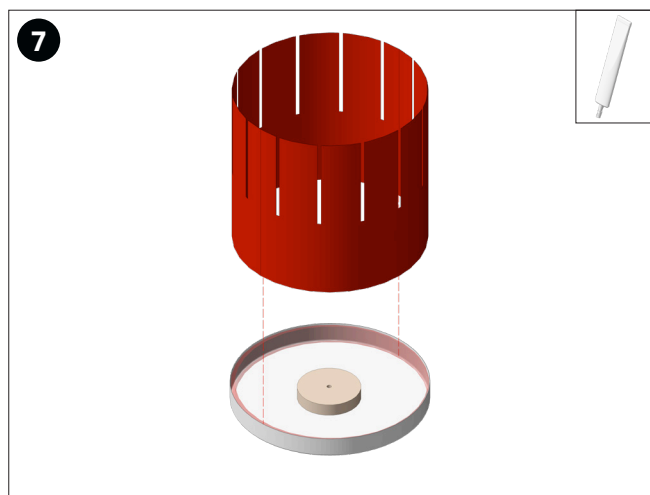
Transfer the slotted template (template 1) twice onto the cardboard and cut out.



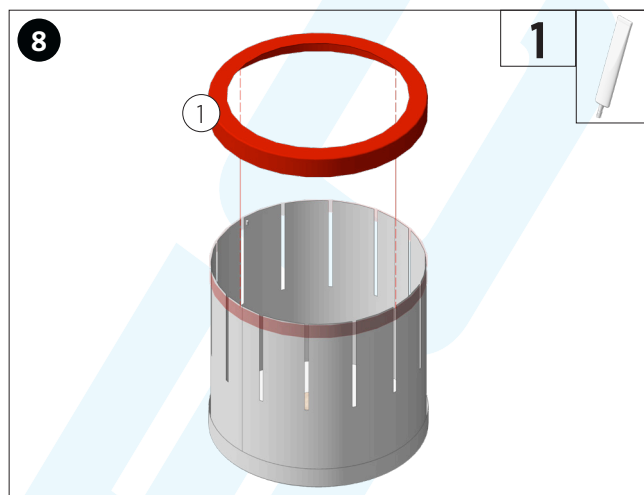
Cut out the inlay sheets (template 2-5).



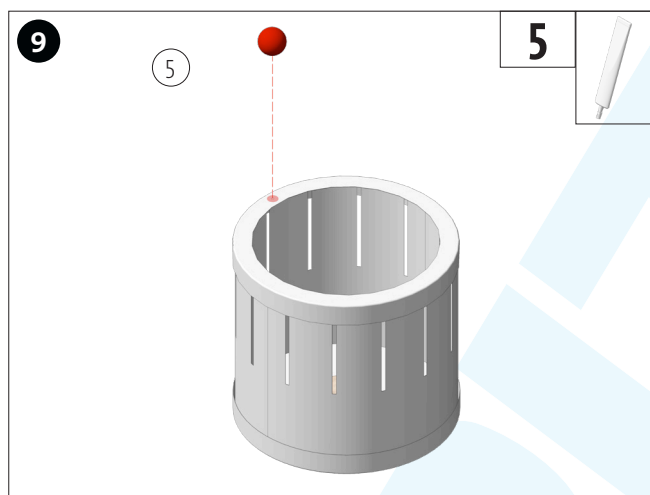
Glue the cut-out cardboard together on the gluing surface and repeat with the insert sheets. Then glue the glued parts together to form a ring, with the picture on the inlay sheets facing inwards.



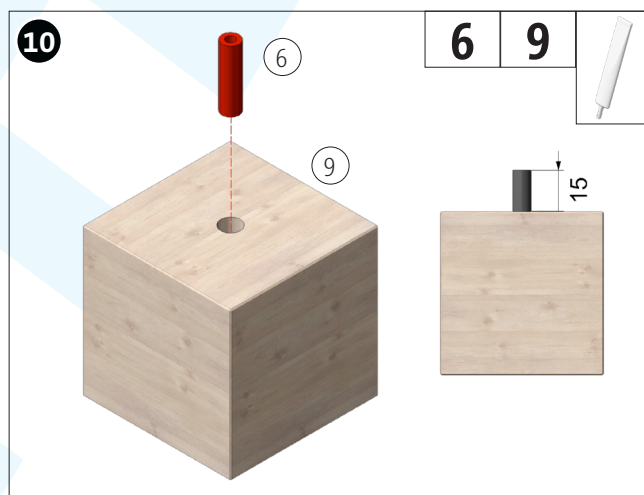
Glue the resulting slit drum into the prepared lantern base with the slits facing upwards



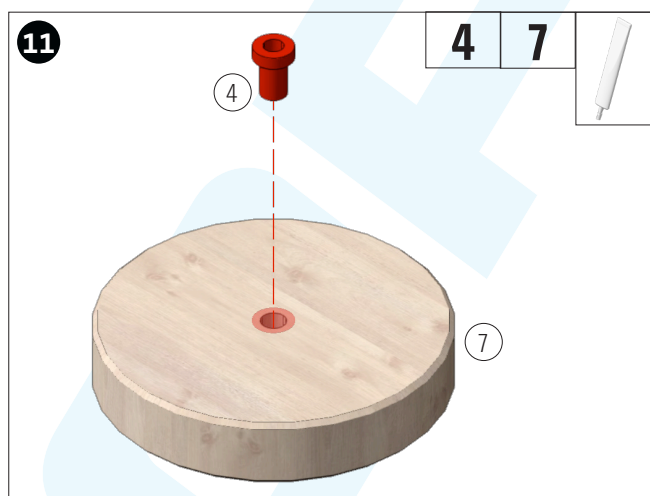
Glue the lantern cover (1) to the top of the slit drum



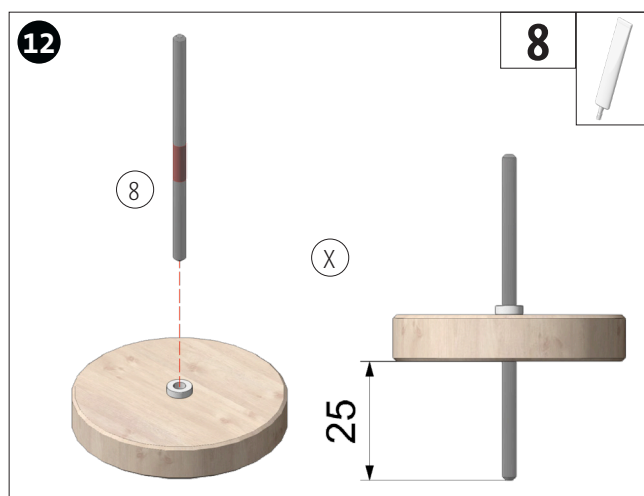
Glue the wooden ball (5) as a handle anywhere on the top of the lid.



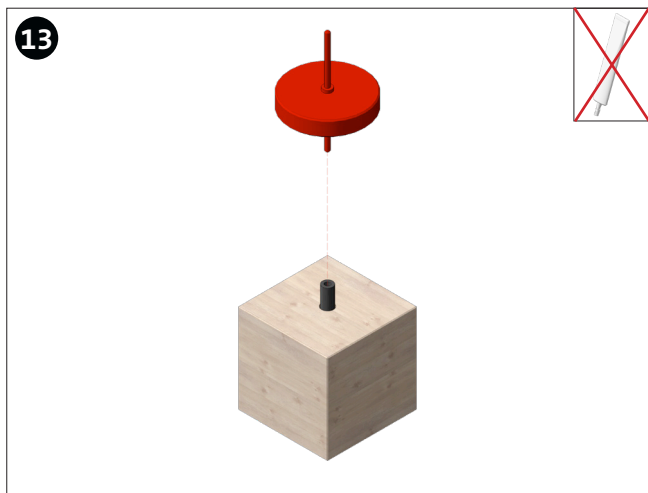
Glue the spacer roller (6) into the hole in the cube and allow it to protrude by approx. 15 mm.



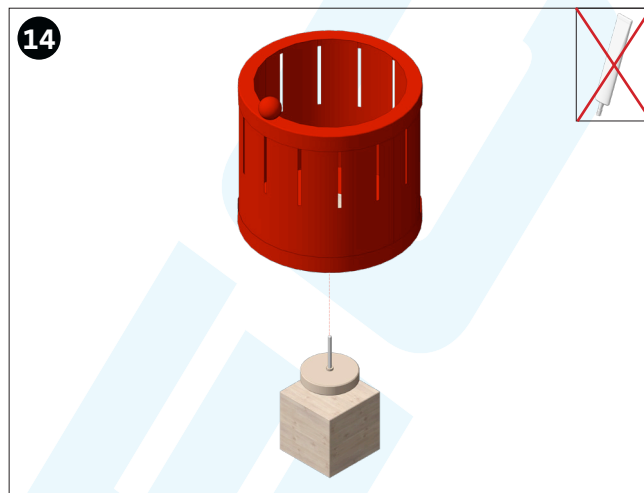
Press the reducer (4) into the hole in the wooden wheel and glue it in place if necessary.



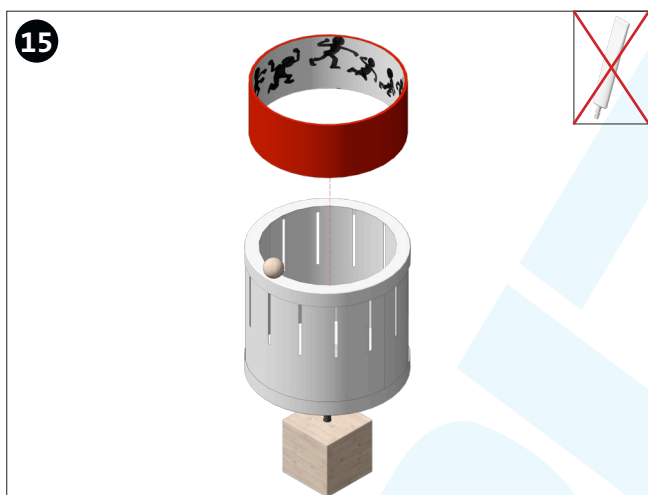
Place this wooden wheel on the metal axle (reducer facing upwards!) and glue it in place if necessary, leaving a distance of approx. 25 mm at the bottom.



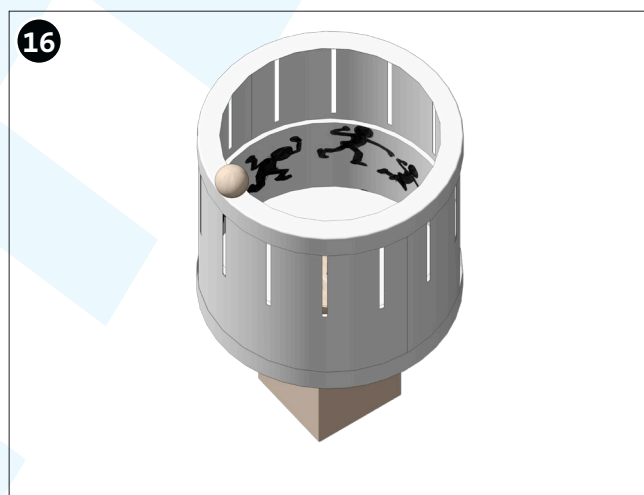
Insert the prepared metal axle into the spacer roller of the cube, push the reducer upwards.



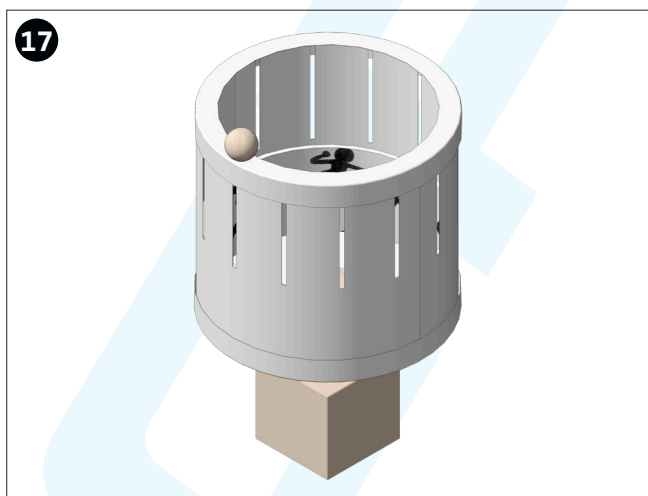
Place the slotted drum on the other end of the metal axle and check that it runs smoothly.



Insert an insert ring into the inside of the slitting drum.



That's it! Now rotate the drum using the handle...



...and look at the inlay through the slits.

Adhesive surface

OPITEC

OPITEC

Adhesive surface



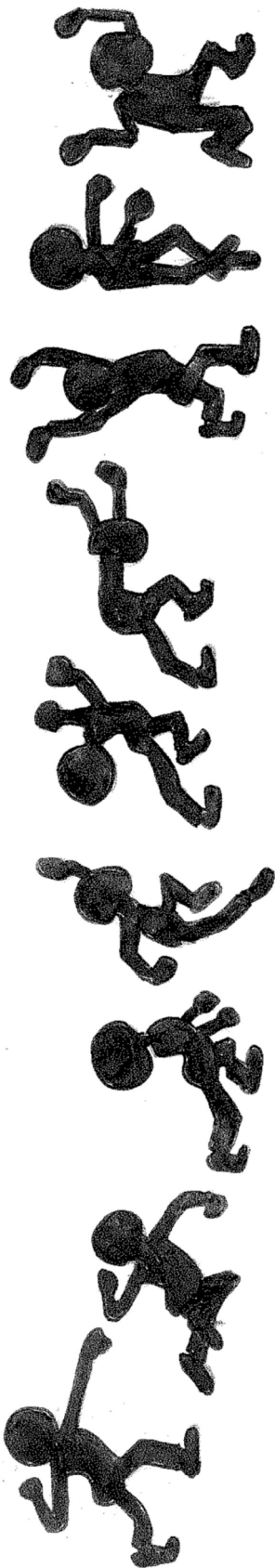
Adhesive surface



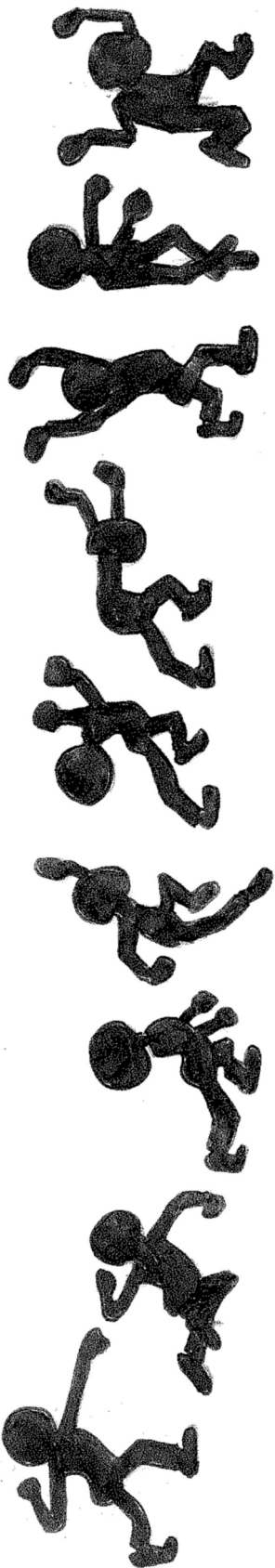
OPITEC

OPITEC

Adhesive surface



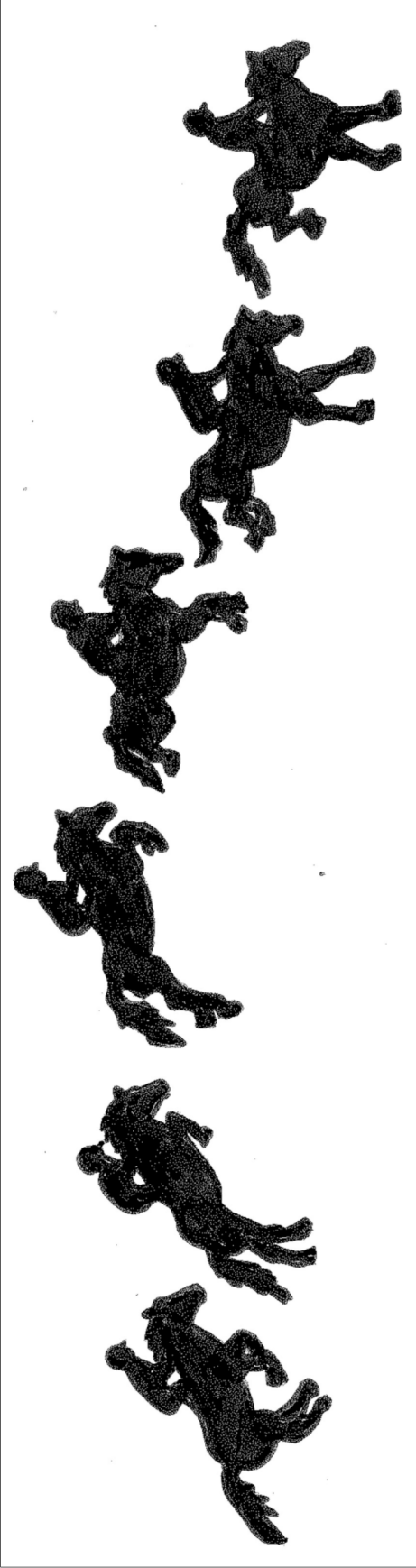
Adhesive surface



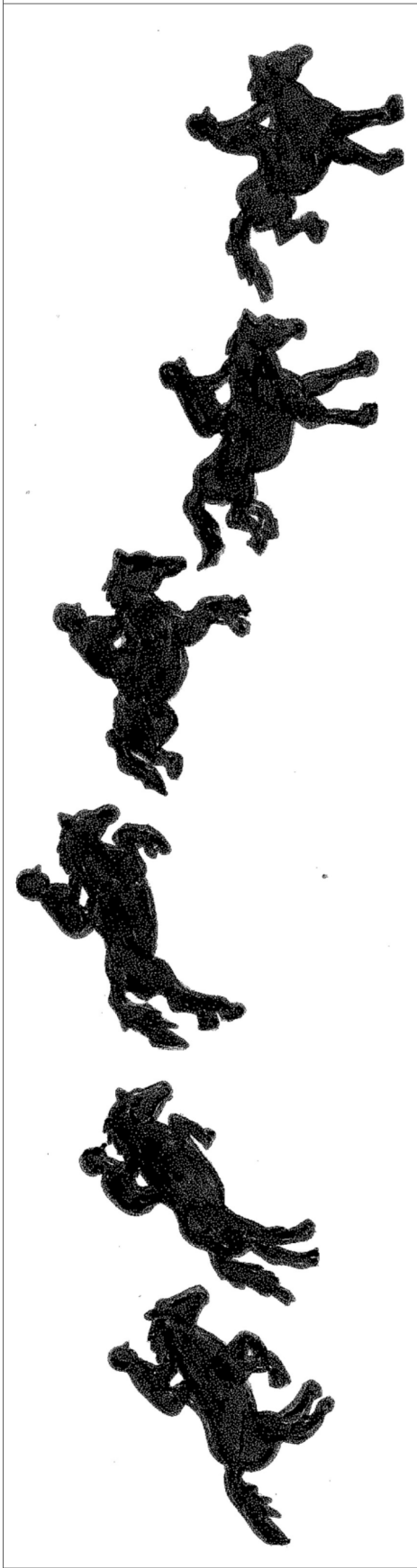
OPITEC

OPITEC

Adhesive surface



Adhesive surface



OPITEC

OPITEC

Adhesive surface

Adhesive surface