

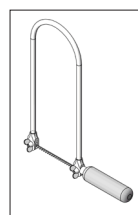
111183

Alu-Key ring

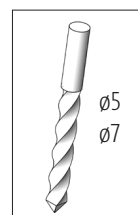
Bottle opener



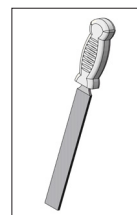
Necessary tools:



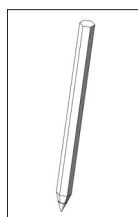
Fretsaw with
metal cutting
blade



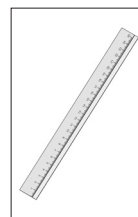
Metal drill
ø5
ø7



File



Pencil



Ruler

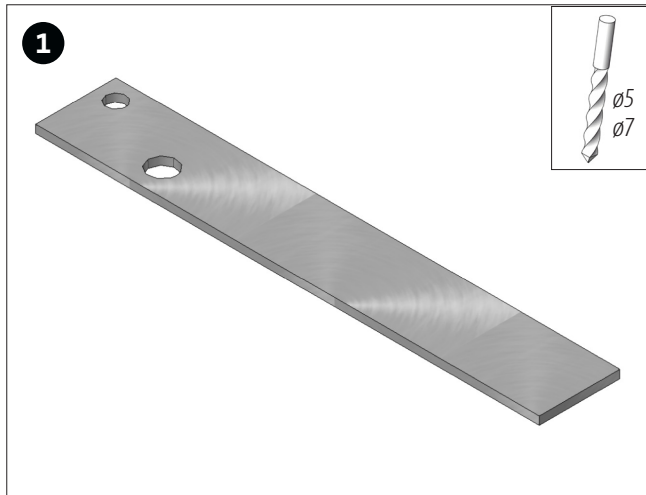
Punch with
stamp or
similar

Please Note

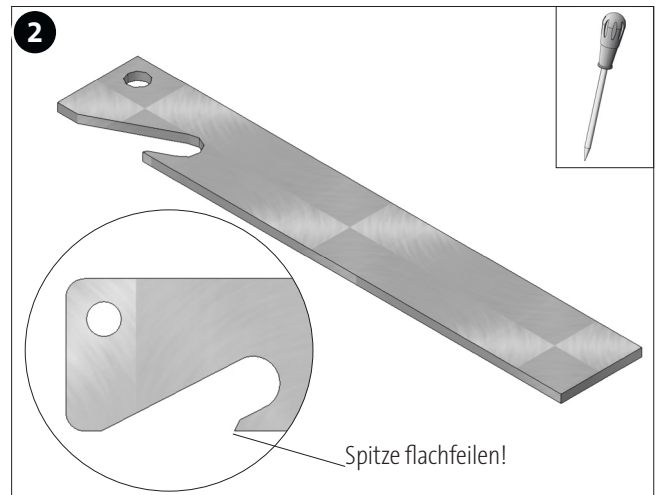
The OPITEC range of projects is not intended as play toys for young children. They are teaching aids for young people learning the skills of Craft, Design and Technology. These projects should only be undertaken and tested with the guidance of a fully qualified adult. The finished projects are not suitable to give to children under 3 years old. Some parts can be swallowed. Danger of suffocation!

PARTS LIST	quantity	Size (mm)	Description	part number.
Aluminium-Strip	1	100x20x2	Basic shape	1
Key ring	1	ø 20	Key holder	2

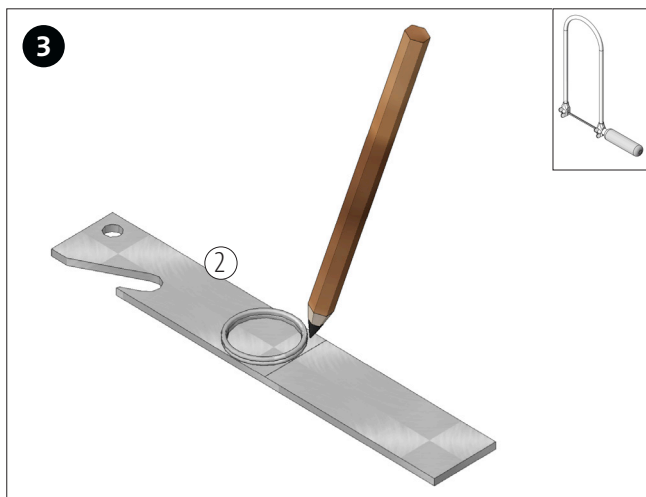
Genera: To work on the aluminium you can use a Fretsaw with a blade suitable for cutting soft metal. Remove all the burr created with a saw using



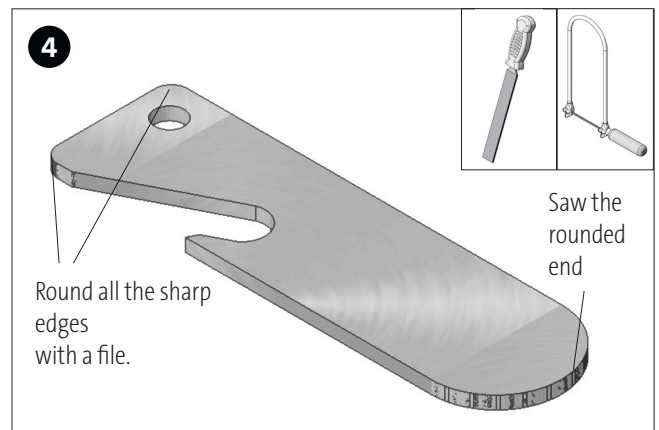
Use the drilling pattern (see page 3) mark out and drill the 5mm hole and the 7mm hole as shown.



Using the patterns mark the 5 and 20mm edges. Use a fretsaw to cut out the shapes. Remove the burr with a file.



Mark out the length of 70mm. Using a pencil and the key ring mark out the rounded end of the opener. See diagram.



Use a Fretsaw to cut out the rounded end. File any burr to finish the shapet!

Finishing ideas:

- Using an engraving tool or punches you can add your name and address

- Add a small scale as a ruler.

5. Finally fit the key ring.
Ready!

