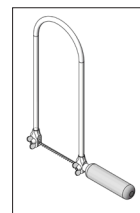


122474

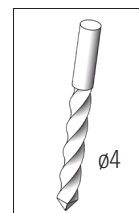
3D Advent Wreath



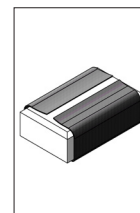
Required Tools:



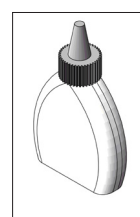
Jigsaw



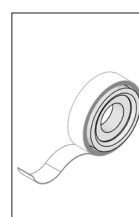
Drill



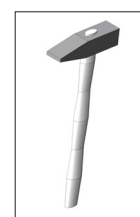
Sandpaper



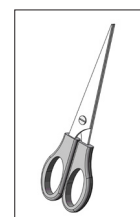
Wood Glue



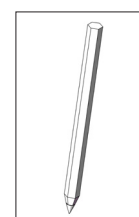
Adhesive Tape



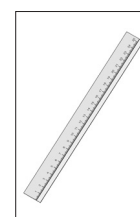
Hammer



Scissors



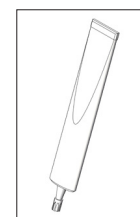
Pencil



Ruler



Pliers



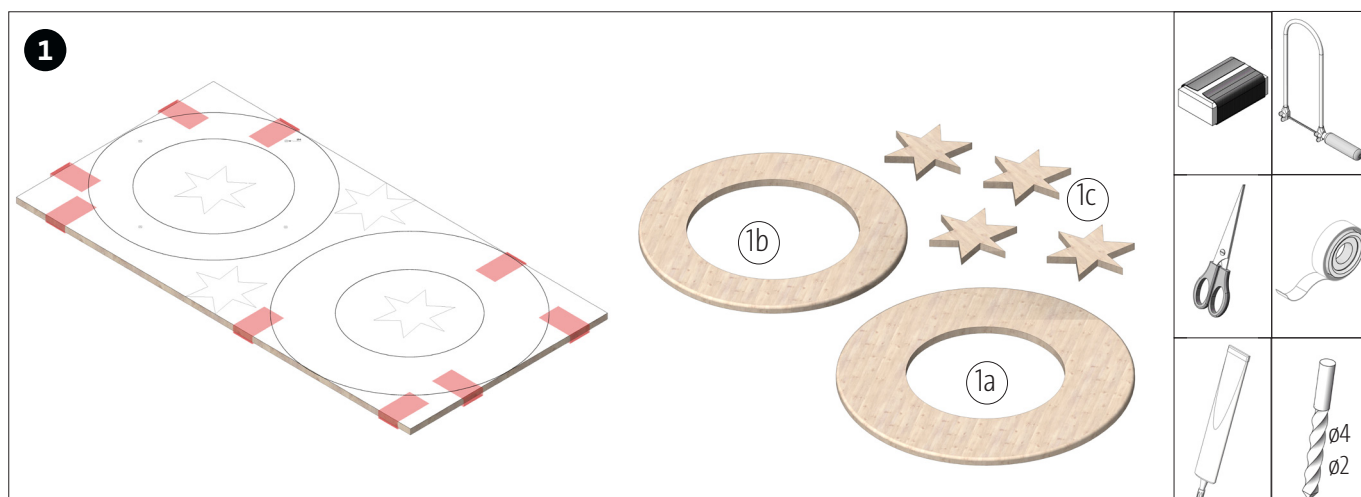
Superglue

Note:

The OPITEC handicraft packs are not toys in a typical off-the-shelf sense, but rather additional teaching and learning material for educational purposes. This craft pack may only be constructed by children and adolescents under the guidance and supervision of experienced adults. Not suitable for children under 36 months. Danger of suffocation!

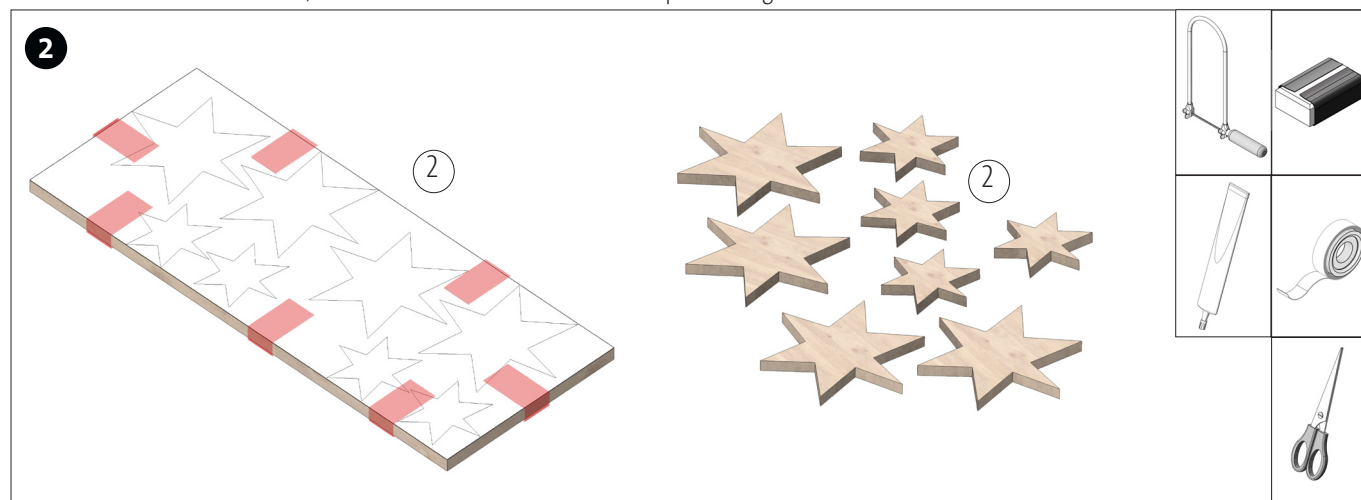
Parts List	Quantity	Size (mm)	Description	Part No.
Plywood	1	600x300x8	Base Plate	1
Plywood	1	250x100x5	Base Plate Stars	2
Drive-In Nut	4	M4x6	Candle Spike Fixing	3
Candle Spikes	4	M4x20	Candle Spikes	4
Tealights Holder	4		Candle Bowl	5

Instructions 122.474
3D Advent Wreath

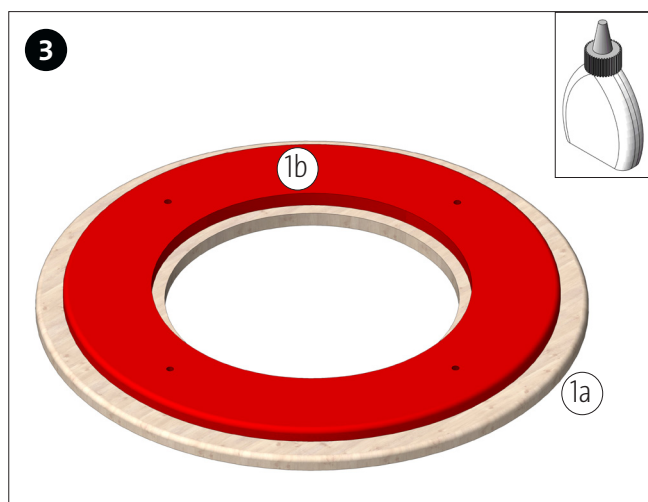


Cut out the pattern for the base plate (1) (page 5-15) and glue it together at the adhesive surfaces. Then fix it to the plywood board with adhesive tape. Drill the $\varnothing 4$ mm holes in the smaller rings. Then saw out the single parts and clean the saw cuts. Round off the outer edges of the rings with sandpaper, as shown.

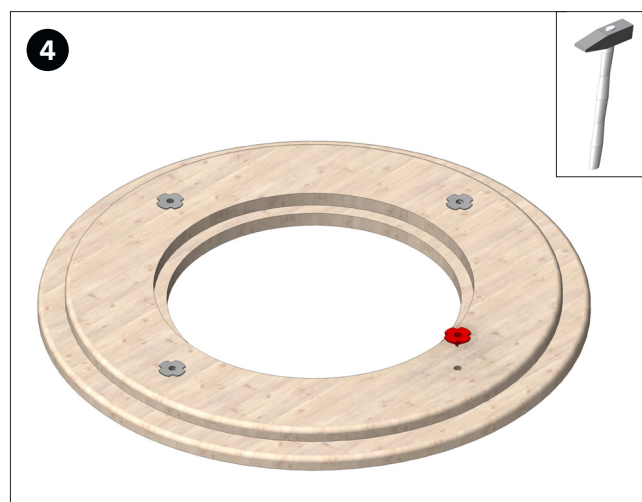
Note: To saw out the inner circles, drill a $\varnothing 2$ mm hole for the saw blade to pass through.



Cut out the pattern for the stars (page 17) and fix it to the plywood (2) with adhesive tape. Drill all the stars and then clean the saw cuts.

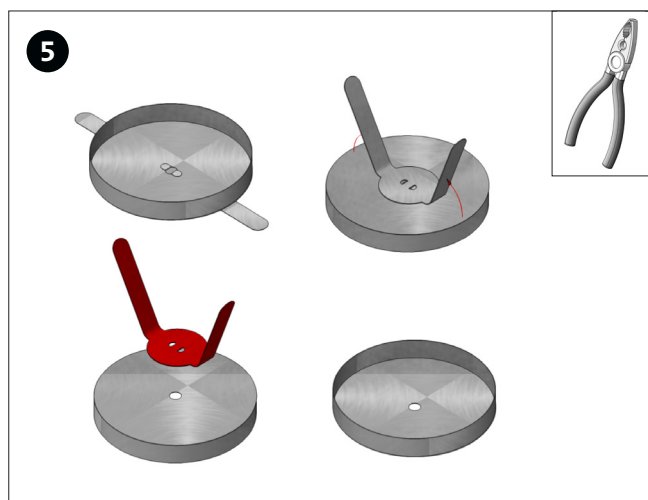


Glue the wooden ring (1b) centred onto the wooden ring (1a), as shown.

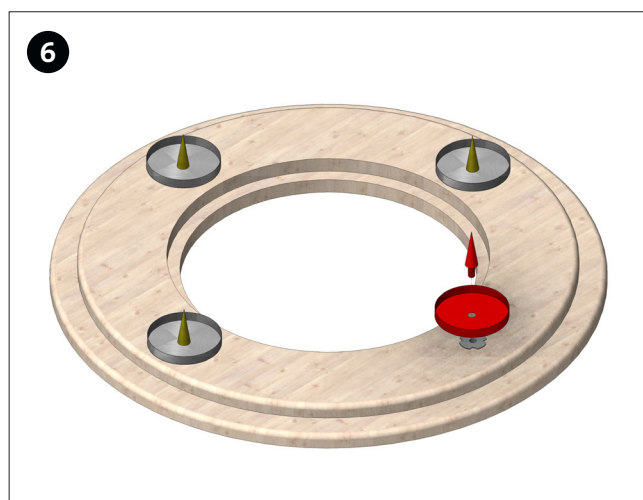


Fix the drive-in nuts (3) into the $\varnothing 4$ mm holes with a hammer.

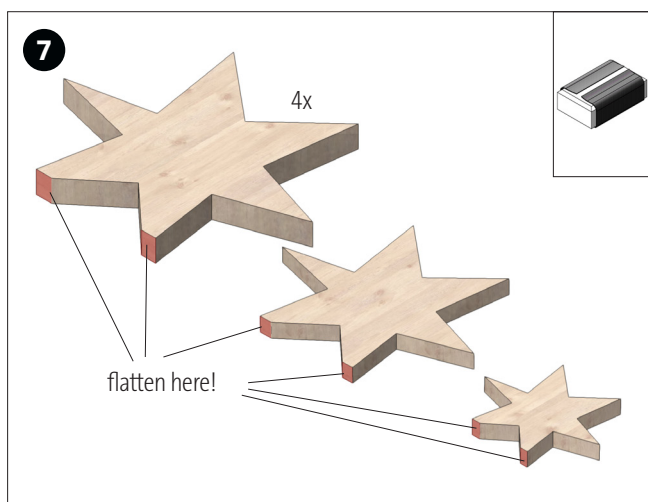
Instructions 122.474
3D Advent Wreath



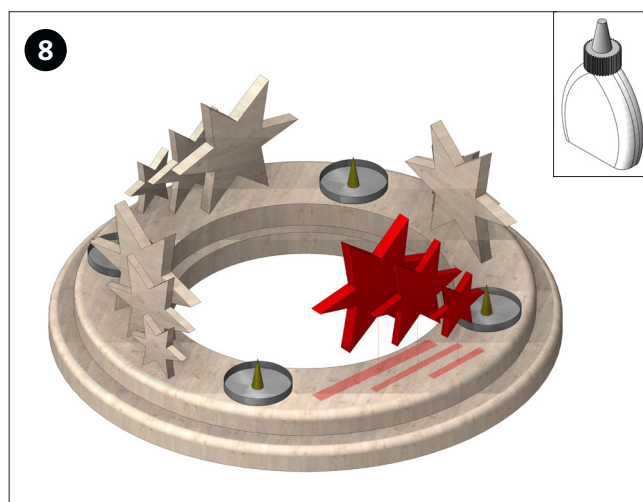
Remove the tabs on the back of the tealights holder (5) with the pliers.



Then place the tealights holder on the drive-in nuts and screw them into the drive-in nuts, each with a candle spike, as shown.

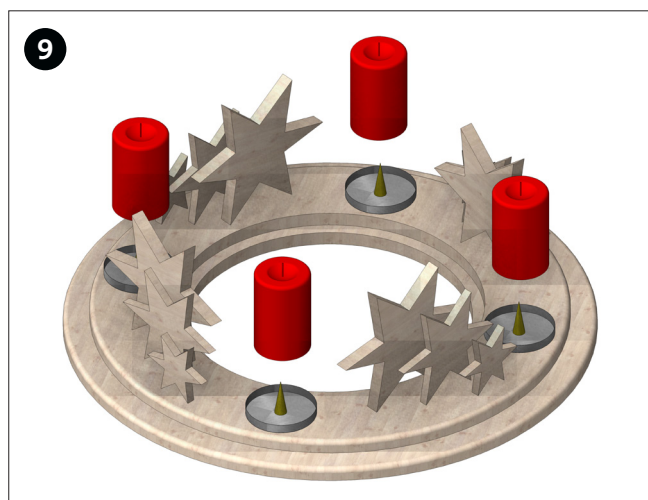


To glue the stars onto the wreath, flatten two tips on each side, as shown.



Glue the stars, centred between two candle holders, onto the wreath ring (1b), as shown.

Note: Make sure there is enough distance to the candles!



Insert a candle on each holder (we recommend art. no. 426754).



Done!

