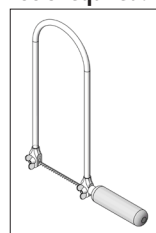


# 121.157

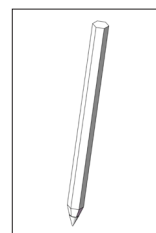
## LED Bedside Lamp



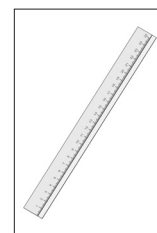
### Tools required:



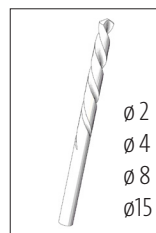
Jigsaw or Scroll Saw



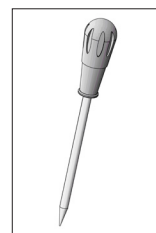
Pencil



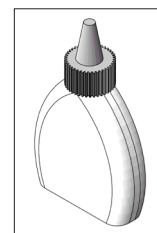
Ruler



Drill



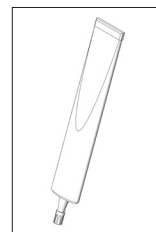
Pricking Awl



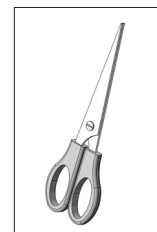
Wood Glue



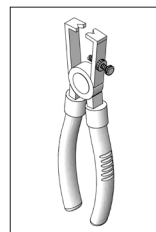
Soldering Iron and Solder



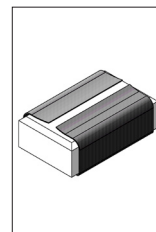
All Purpose Glue



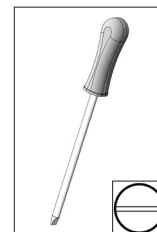
Scissors



Insulated Wire Strippers



Sandpaper



Slot Screwdriver

### NOTE:

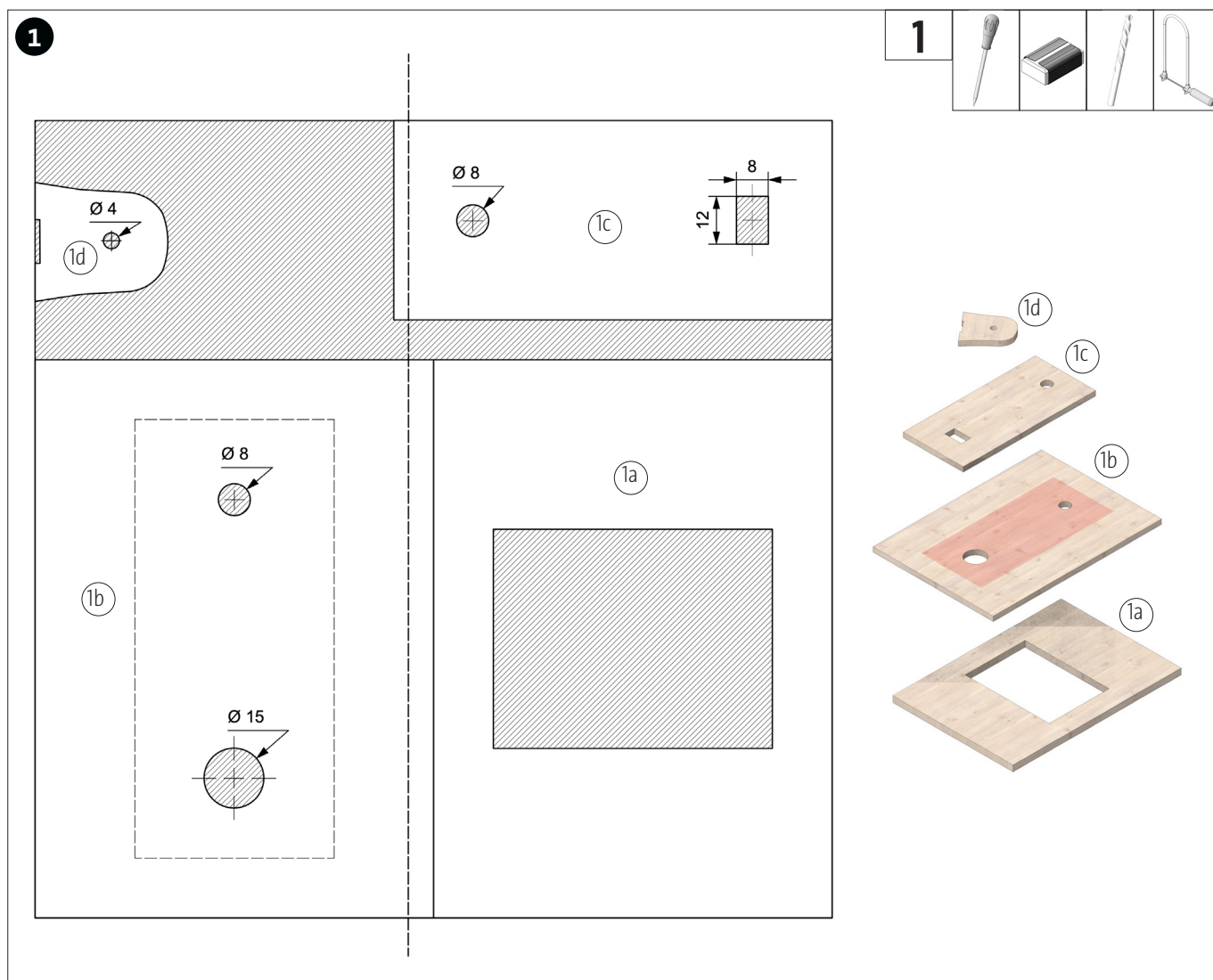
After completion, the OPITEC work kits are not articles with toy character of a generally commercial kind, but teaching and learning aids to support educational work. This kit may only be built and operated by children and young people under the guidance and supervision of competent adults. Not suitable for children under 36 months. Danger of suffocation!

Parts List	Number of pieces	Size (mm):	Description	Parts No.
Plywood	1	200x200x4	Stand/Lampshade	1
Wooden Strip	2	200x30x5	Stand	2
Wooden Strip	1	75x40x15	Stand	3
Wooden Strip	2	250x15x5	Lamp Arm	4
Wooden Strip	2	150x15x5	Lamp Arm	5
Wooden Wheel	1	Ø40	Lampshade	6
Transparent paper	1	37x15,5	Lampshade	7
Rocker Switch	1	15x10	Switch	8

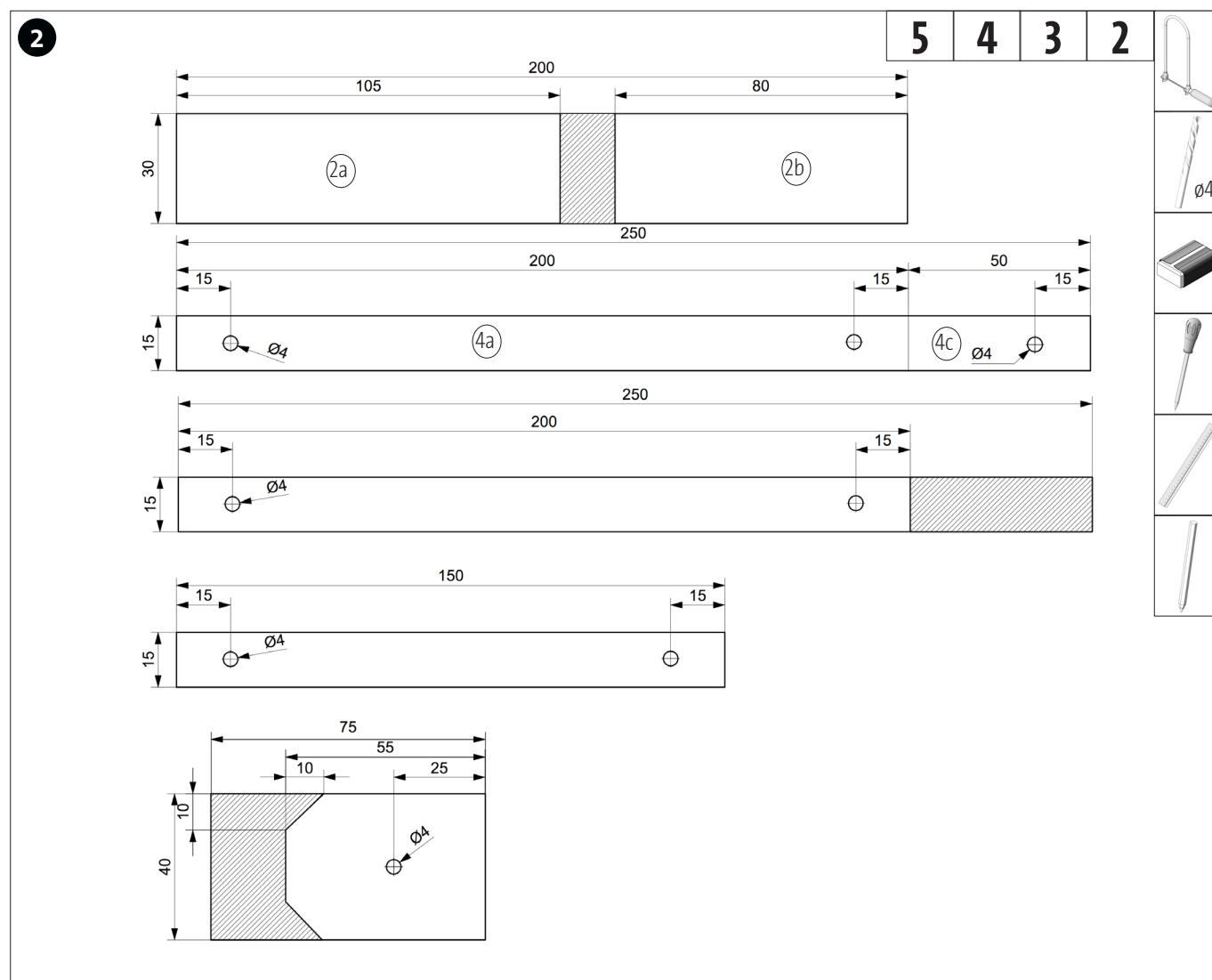
## Building Instructions 121.157

### LED Bedside Lamp

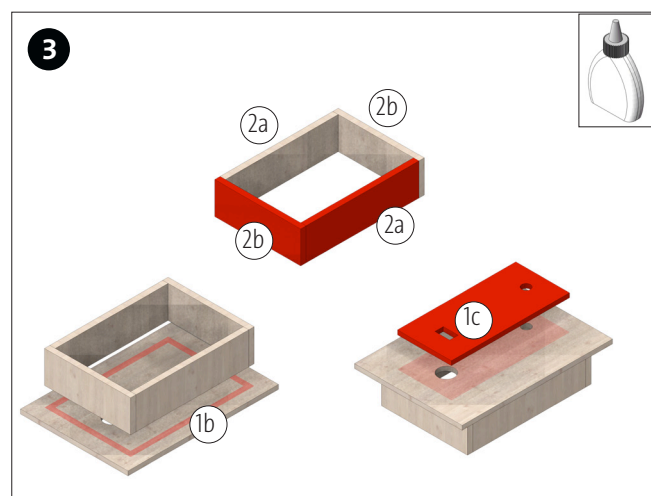
Parts List	Number of pieces	Size (mm):	Description	Parts No.
LED E10	1	ø8	LED	9
Cylinder Head Screw	1	M4x20	Screw Connection	11
Cylinder Head Screw	2	M4x30	Screw Connection	12
Wing Nut	3	M4	Screw Connection	13
Eyebolt	2	10	Cable Routing	14
Double Stranded Wire	1	500	Cabling	15
Frame	1	E10	frame	15
Flat receptacle	2		Battery connection	16



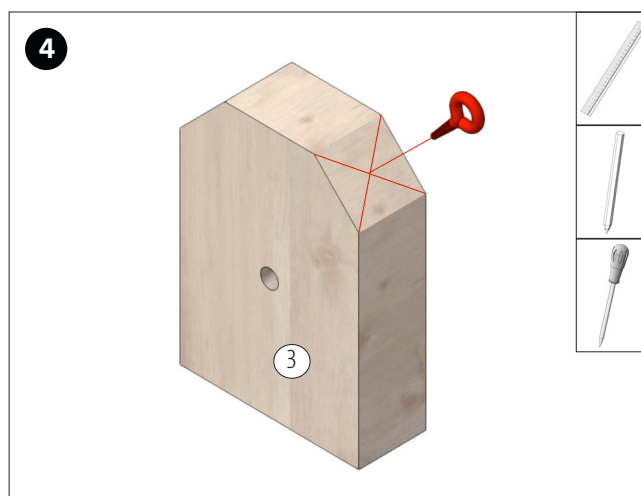
Cut out the template for the base plate (page 7/9), glue together and transfer to the plywood (1). Drill through the holes (ø4, 8, 15). Then saw out the individual parts with the fretsaw / scroll saw and clean the saw cuts with sandpaper.



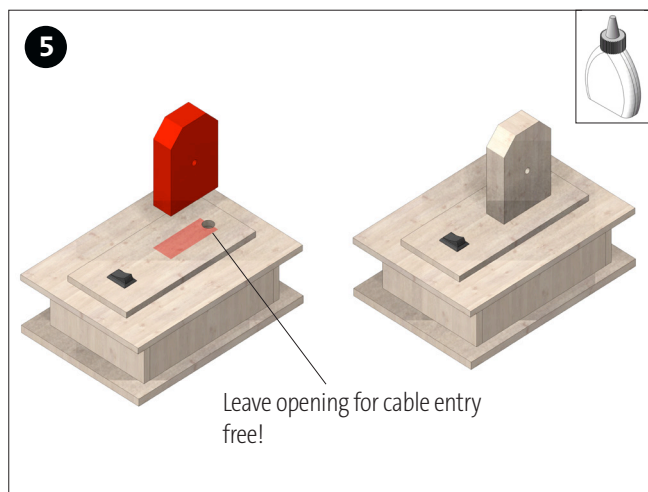
Transfer the dimensioning to the wooden strips (2-5). Mark the planned holes with a drill bit. Drill through the holes ( $\varnothing 4$  mm). Cut the strips to length and clean the saw cuts.



Die Holzleisten (2a+2b) wie abgebildet zu einem Rahmen verleimen. Den Rahmen anschließend ausgemittelt auf Teil (1b) aufleimen. Umdrehen und nach ausreichender Trocknung des Leimes das Oberteil (1c) wie abgebildet aufleimen.



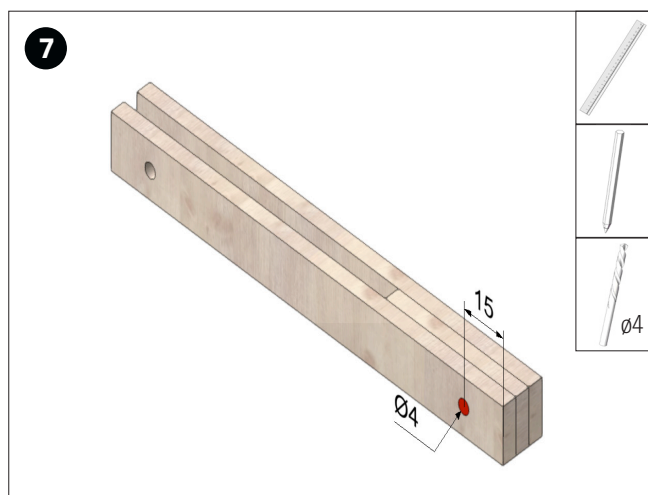
Auf der Holzleiste (3) auf einer der 45°-Kanten durch Diagonalen den Mittelpunkt anzeichnen und vorstechen. Anschließend eine Ringschraube (14) am Mittelpunkt eindrehen, so dass die Öffnung nach oben zeigt.



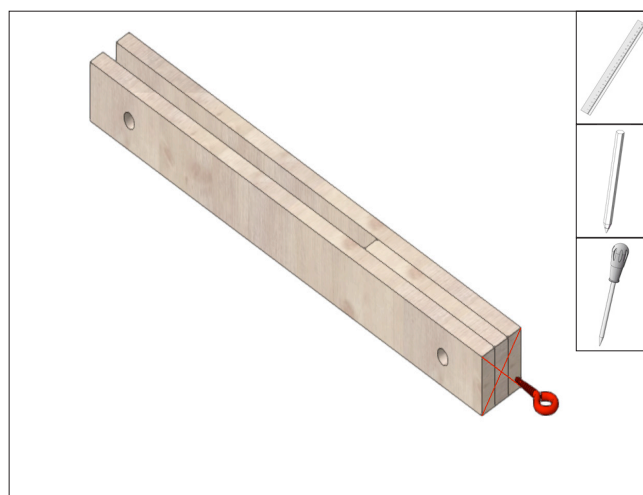
Glue the finished base (3) onto the cover (1c) so that approx. 1/3 of the 8 mm hole remains free to feed the cables through later.



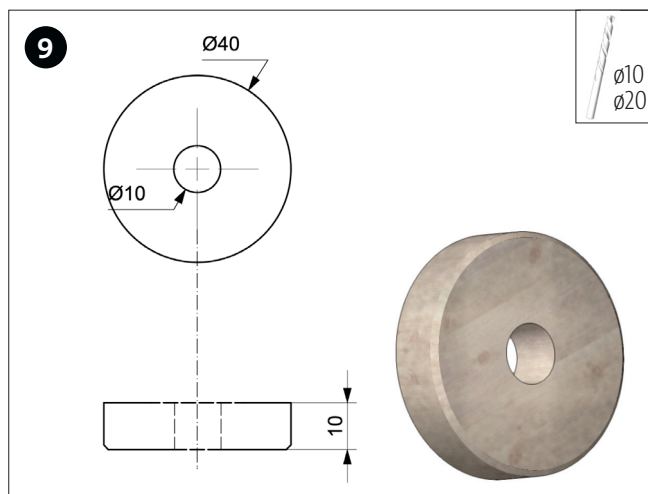
Glue the two wooden strips (5) and the wooden strip (4c) as shown above. Allow the glue to dry thoroughly.



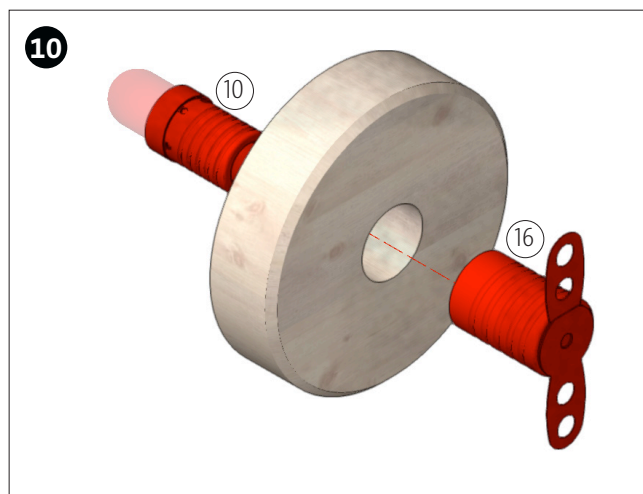
Then measure 15 mm at the glued end and drill through the centre with a  $\varnothing 4$  mm drill.



Determine the centre point on the front side using diagonals. Pre-punch this and then screw in an eyebolt (14) so that the opening is at right angles to the mouldings (see illustration)

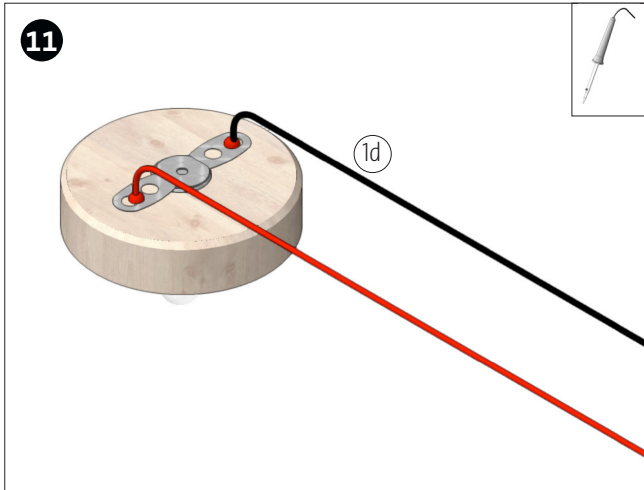


Drill  $\varnothing 10$ mm holes in the wooden wheel (6) as shown.

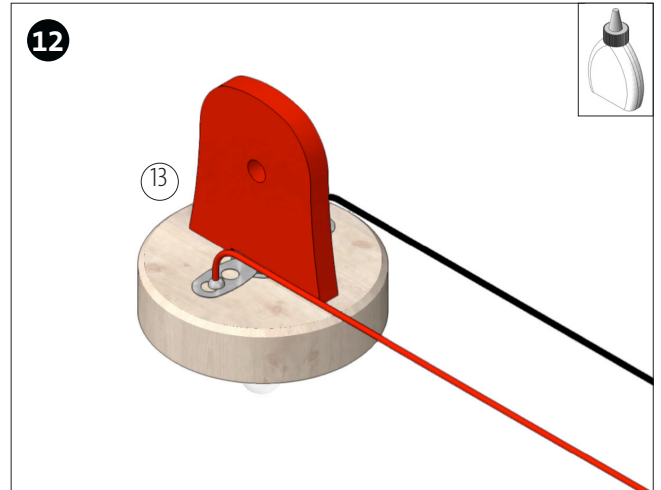


Insert the LED socket (15) into the hole in the wooden wheel (6) as shown and screw the LED (10) into the socket from the other side

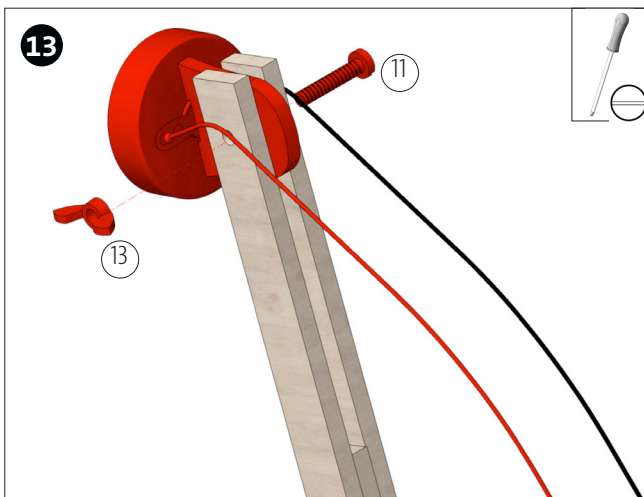
**Instructions 121.157**  
**LED bedside lamp**



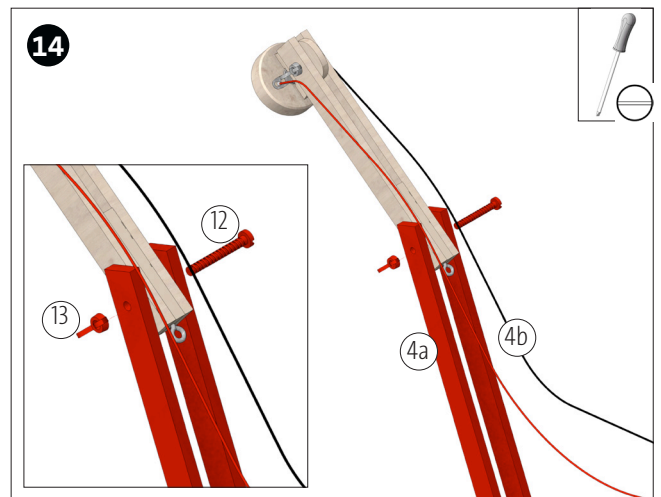
Strip the ends of the two connection cables (red & black) and solder them to the lugs of the LED socket as shown.



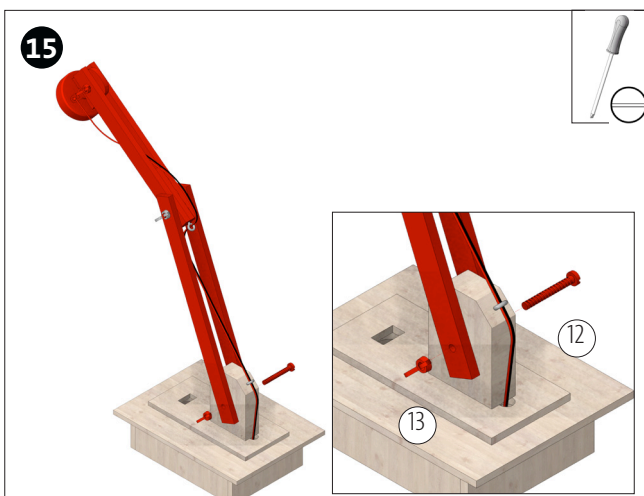
Glue on part (1d) centred as shown



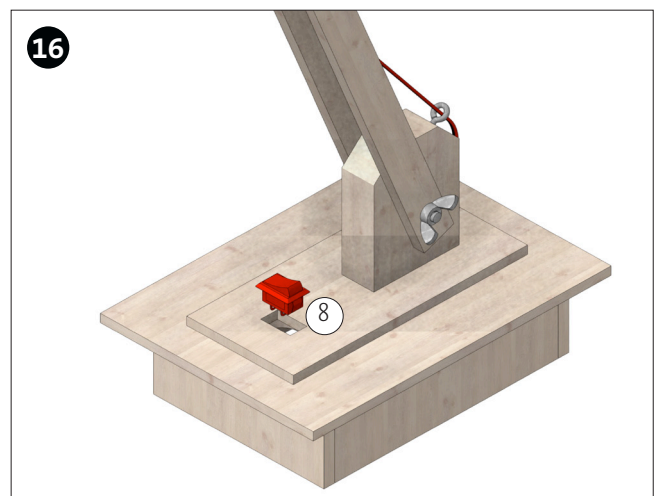
Insert the finished lamp head between the two mouldings of the upper part of the lamp as shown and secure with a screw (11) and a cap nut (13).



Fasten the two wooden strips (4a+4b) with a screw (12) and a wing nut (13) as shown.

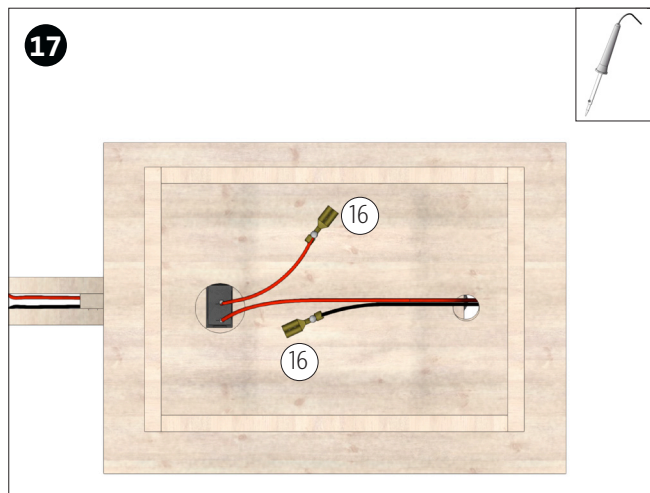


Fasten the lamp arm to the base with a screw (12) and a wing nut (13) as shown. Thread the double stranded wire as shown and guide the ends down through the opening in the base plate.

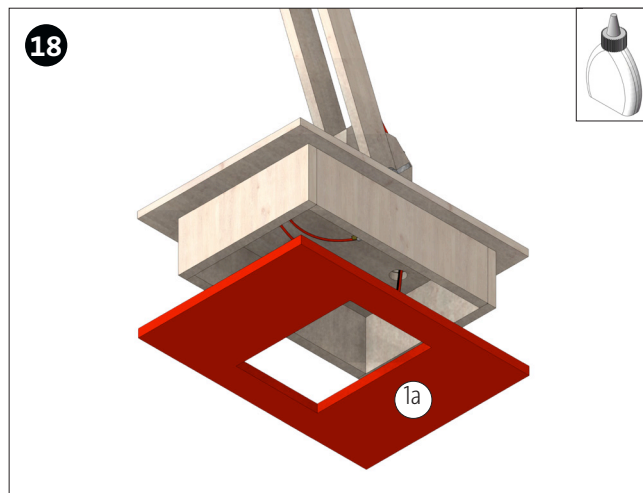


Insert the rocker switch (8) into the existing opening.

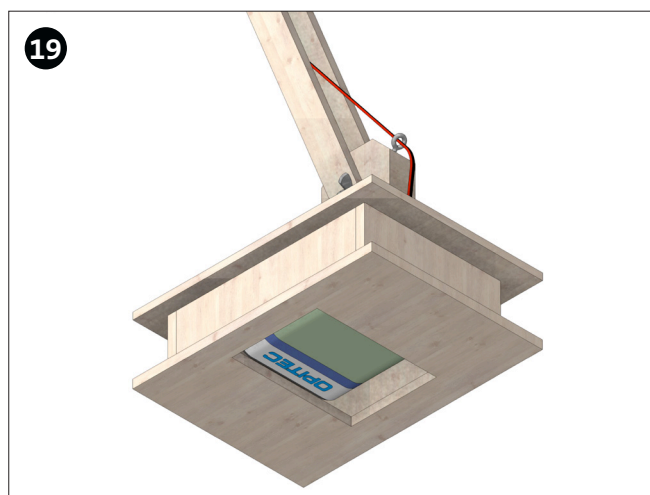




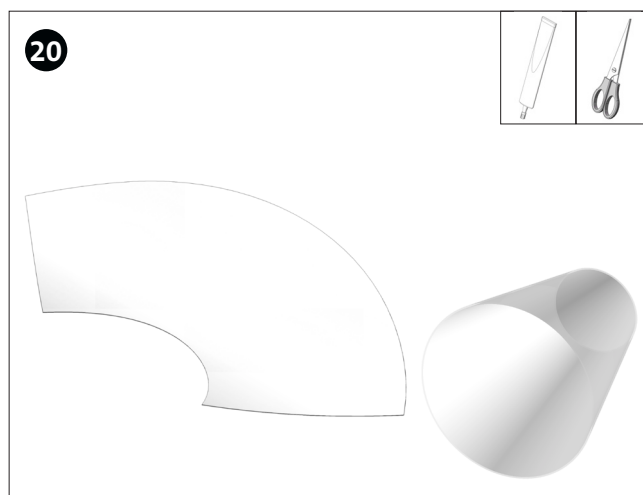
Solder an approx. 40 mm long piece of cable to the centre switch connection. Solder the red cable coming from the lamp head to the outer switch connection. Connect the blade terminals (16) as shown.



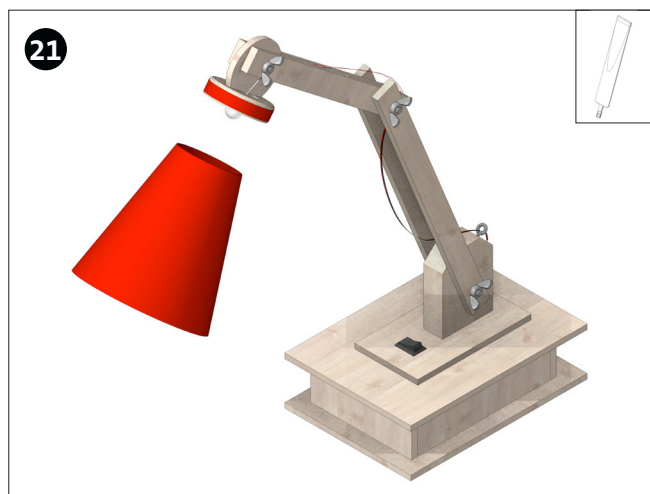
Glue the base plate (1a) from below as shown.



Connect a 4.5 V battery to the blade terminals (16) and insert through the opening in the base plate as shown; check function!



Transfer the template (see below ) for the lampshade to the tracing paper (7) and cut it out. Then glue together with superglue or all-purpose glue on the gluing surface. Note: Check the small diameter on the wooden wheel.



Slide the lampshade onto the wheel as shown and glue it in place. Done!

**Instructions 121.157**  
**LED bedside lamp**

**Lampshade template**

M 1:1

**Note:**

Place transparent paper on top and trace through!

